

PRINCE GEORGE'S COUNTY HIV/AIDS EPIDEMIOLOGICAL PROFILE

Second Quarter 2008 - Data reported through June 30, 2008

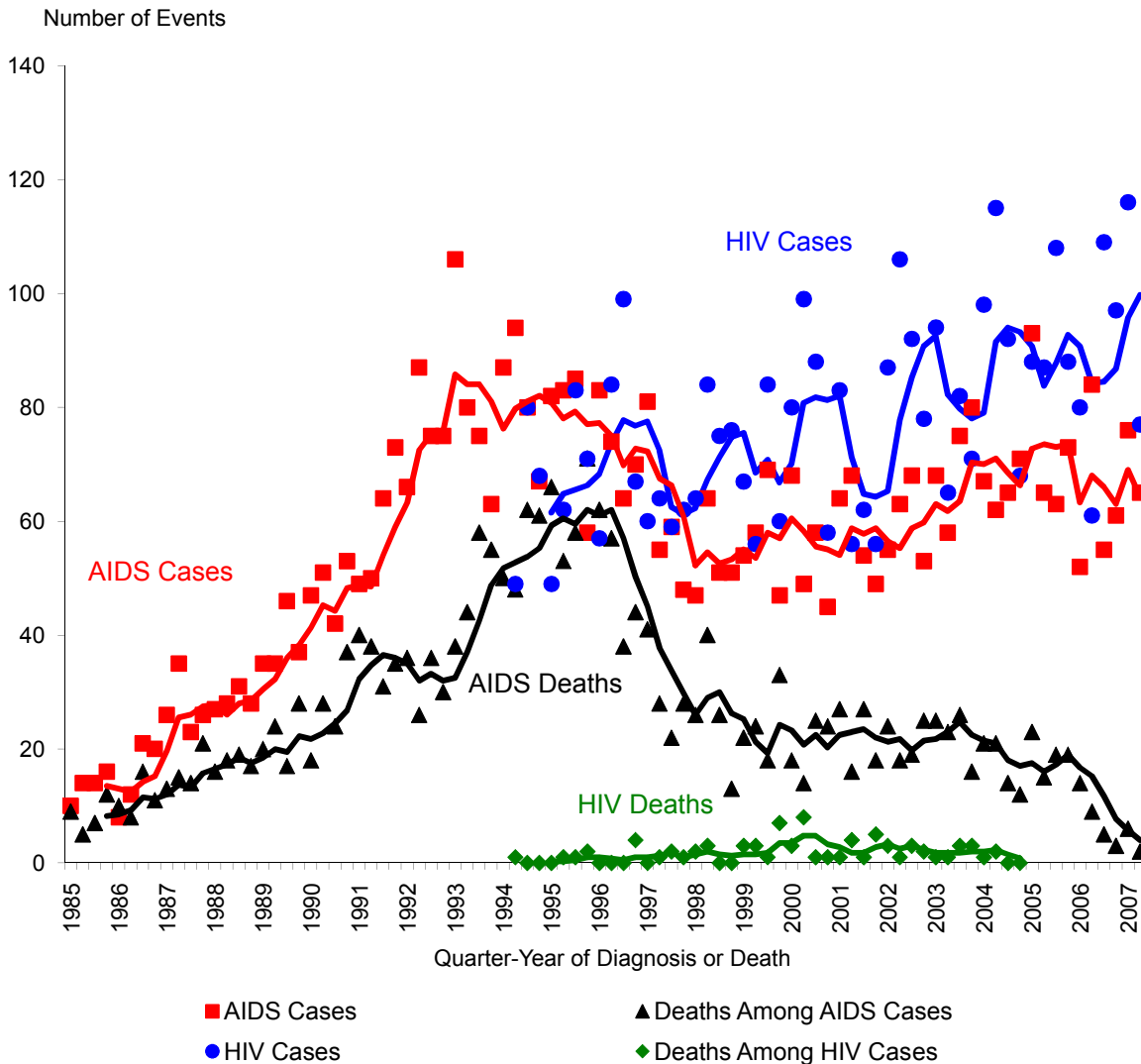
AIDS Administration
Maryland Department of Health and Mental Hygiene
www.dhmd.state.md.us/AIDS/
1-800-358-9001

SPECIAL NOTE ON HIV REPORTING

The Maryland HIV/AIDS Reporting Act of 2007 became law on April 24, 2007. The law expanded HIV reporting and required that HIV cases now be reported by name. The reporting period presented in this report includes the first full year of the new reporting, however, most of the tables and figures are as of the end of code-reporting and are unaffected by this change. Future reports will be modified to include the changes. For additional information on HIV reporting please visit the AIDS Administration web site at the above address.

Section I - Prince George's County HIV and AIDS Case Trends

Incident (Newly Diagnosed) HIV and AIDS Cases and Deaths among HIV and AIDS Cases by Quarter-Year through Second Quarter 2006 as Reported through 6/30/08



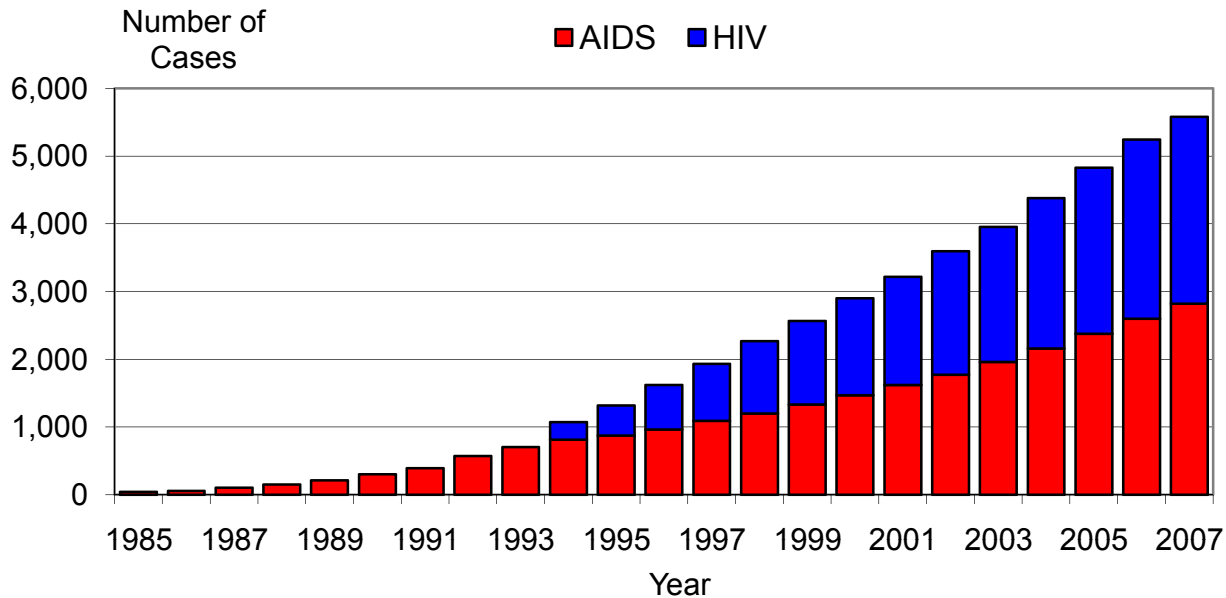
HIV case reporting began in June of 1994.
 Trend lines are weighted moving averages (over 4 quarters).

PRINCE GEORGE'S COUNTY HIV/AIDS EPIDEMIOLOGICAL PROFILE

June 30, 2008

Section II - Prince George's County HIV and AIDS Case Prevalence Trends

Prevalent (Living) HIV and AIDS Cases on December 31st of Each Year as Reported through 6/30/08



YEAR	HIV	AIDS	Total HIV/AIDS
1985		41	41
1986		57	57
1987		104	104
1988		150	150
1989		214	214
1990		301	301
1991		394	394
1992		571	571
1993		702	702
1994	257	813	1,070
1995	444	874	1,318
1996	654	965	1,619
1997	842	1,092	1,934
1998	1,069	1,200	2,269
1999	1,235	1,331	2,566
2000	1,431	1,471	2,902
2001	1,601	1,618	3,219
2002	1,826	1,771	3,597
2003	1,992	1,962	3,954
2004	2,219	2,159	4,378
2005	2,449	2,378	4,827
2006	2,645	2,599	5,244
2007	2,760	2,818	5,578

Prevalent cases are alive on December 31st of the given year.

June 30th for HIV in 2007

PRINCE GEORGE'S COUNTY HIV/AIDS EPIDEMIOLOGICAL PROFILE
June 30, 2008

Section III - Prince George's County HIV and AIDS Case Geography

Incidence (Newly Diagnosed Cases) during 7/1/06-6/30/07 and Prevalence (Living Cases) on 6/30/07 as Reported through 6/30/08

ZIP CODE	Incidence				Prevalence				Total HIV/AIDS	
	HIV		AIDS		HIV		AIDS		No.	%
	No.	%	No.	%	No.	%	No.	%		
20601	0	0.0%	0	0.0%	0	0.0%	0	0.0%	0	0.0%
20607	3	0.9%	1	0.4%	12	0.5%	10	0.4%	22	0.4%
20608	0	0.0%	0	0.0%	3	0.1%	2	0.1%	5	0.1%
20613	0	0.0%	0	0.0%	4	0.2%	11	0.4%	15	0.3%
20623	0	0.0%	1	0.4%	3	0.1%	10	0.4%	13	0.3%
20705	9	2.8%	9	3.6%	28	1.1%	50	1.9%	78	1.5%
20706	18	5.6%	14	5.6%	95	3.9%	108	4.0%	203	0.2%
20707	9	2.8%	5	2.0%	53	2.2%	40	1.5%	93	1.8%
20708	3	0.9%	3	1.2%	60	2.5%	48	1.8%	108	2.1%
20710	1	0.3%	5	2.0%	66	2.7%	39	1.4%	105	2.0%
20712	8	2.5%	4	1.6%	43	1.8%	57	2.1%	100	1.9%
20715	1	0.3%	1	0.4%	9	0.4%	19	0.7%	28	0.5%
20716	3	0.9%	1	0.4%	22	0.9%	30	1.1%	52	1.0%
20720	6	1.9%	1	0.4%	22	0.9%	12	0.4%	34	0.7%
20721	11	3.4%	6	2.4%	36	1.5%	44	1.6%	80	1.6%
20722	3	0.9%	0	0.0%	13	0.5%	21	0.8%	34	0.7%
20723	0	0.0%	2	0.8%	10	0.4%	10	0.4%	20	0.4%
20724	0	0.0%	1	0.4%	0	0.0%	3	0.1%	3	0.1%
20735	14	1.8%	13	2.5%	77	1.4%	92	1.7%	169	1.5%
20737	8	1.0%	4	0.8%	58	1.1%	62	1.1%	120	1.1%
20740	0	0.0%	1	0.2%	26	0.5%	26	0.5%	52	0.5%
20742	0	0.0%	1	0.2%	5	0.1%	6	0.1%	11	0.1%
20743	29	3.8%	16	3.3%	304	5.7%	291	5.5%	595	5.6%
20744	8	1.1%	13	2.7%	78	1.5%	116	2.2%	194	1.8%
20745	15	2.0%	7	1.5%	108	2.1%	149	2.9%	257	2.5%
20746	29	3.8%	11	2.3%	181	3.5%	131	2.5%	312	3.0%
20747	19	2.5%	11	2.3%	209	4.1%	199	3.9%	408	4.0%
20748	18	2.4%	16	3.4%	136	2.6%	177	3.5%	313	3.1%
20749	0	0.0%	0	0.0%	0	0.0%	3	0.1%	3	0.0%
20762	0	0.0%	0	0.0%	3	0.1%	2	0.0%	5	0.0%
20764	0	0.0%	0	0.0%	0	0.0%	1	0.0%	1	0.0%
20769	0	0.0%	0	0.0%	1	0.0%	4	0.1%	5	0.1%
20770	8	2.5%	9	3.6%	62	2.5%	73	2.7%	135	2.6%
20771	0	0.0%	0	0.0%	1	0.0%	0	0.0%	1	0.0%
20772	16	5.0%	12	2.5%	98	4.0%	99	3.7%	197	3.8%
20774	10	3.1%	12	4.8%	50	2.0%	66	2.4%	116	2.3%
20781	3	0.9%	5	2.0%	22	0.9%	27	1.0%	49	1.0%
20782	10	3.1%	18	7.1%	71	2.9%	130	4.8%	201	3.9%
20783	11	3.4%	14	5.6%	98	4.0%	146	5.4%	244	4.7%
20784	12	3.8%	9	3.6%	103	4.2%	133	4.9%	236	2.5%
20785	32	10.0%	26	10.3%	262	10.7%	243	9.0%	505	9.8%
20871	0	0.0%	0	0.0%	0	0.0%	0	0.0%	0	0.0%
20903	0	0.0%	0	0.0%	0	0.0%	0	0.0%	0	0.0%
20904	0	0.0%	0	0.0%	0	0.0%	0	0.0%	0	0.0%
20912	2	0.6%	0	0.0%	11	0.5%	6	0.2%	17	0.3%
Missing ZIP*	80		5		317		36		353	
<i>Prince George's County</i>	399	100.0%	257	100.0%	2760	100.0%	2732	100.0%	5492	100.0%

Incident cases were cases newly diagnosed during the 12 month period.

Prevalent cases were alive on 6/30/07.

HIV case reporting began in 1994.

For code-based HIV cases reported 7/1/06 through 6/30/07, the median time from diagnosis to report was one month. For AIDS cases reported 7/1/07 through 6/30/08, the median time from diagnosis to report was two months.

* Cases with missing ZIP were excluded from percent distributions.

PRINCE GEORGE'S COUNTY HIV/AIDS EPIDEMIOLOGICAL PROFILE - June 30, 2008

Section IV - Prince George's County HIV and AIDS Case Demographics

Incidence (Newly Diagnosed Cases) during 7/1/06-6/30/07 and Prevalence (Living Cases) on 6/30/07 as Reported through 6/30/08

<u>GENDER</u>	Incidence				Prevalence					
	<u>HIV</u>		<u>AIDS</u>		<u>HIV</u>		<u>AIDS</u>		<u>Total HIV/AIDS</u>	
	No.	%	No.	%	No.	%	No.	%	No.	%
Male	230	57.6%	163	63.4%	1533	55.7%	1771	64.8%	3304	60.3%
Female	169	42.4%	94	36.6%	1217	44.3%	961	35.2%	2178	39.7%
Missing*	0				10				10	
TOTAL	399	100.0%	257	100.0%	2760	100.0%	2732	100.0%	5492	100.0%

<u>RACE/ETHNICITY</u>	Incidence				Prevalence					
	<u>HIV</u>		<u>AIDS</u>		<u>HIV</u>		<u>AIDS</u>		<u>Total HIV/AIDS</u>	
	No.	%	No.	%	No.	%	No.	%	No.	%
White	11	5.3%	8	3.1%	108	5.7%	191	7.0%	299	10.1%
African-American	165	80.1%	236	91.8%	1643	86.8%	2416	88.4%	4059	87.8%
Hispanic	14	6.8%	9	3.5%	64	3.4%	109	4.0%	173	3.7%
Other	16	7.8%	4	1.6%	78	4.1%	16	0.6%	94	2.0%
Missing*	193				867				867	
TOTAL	399	100.0%	257	100.0%	2760	100.0%	2732	100.0%	5492	100.0%

<u>AGE**</u>	Incidence				Prevalence					
	<u>HIV</u>		<u>AIDS</u>		<u>HIV</u>		<u>AIDS</u>		<u>Total HIV/AIDS</u>	
	No.	%	No.	%	No.	%	No.	%	No.	%
<5 (Pediatric)	1	0.3%	0	0.0%	8	0.3%	0	0.0%	8	0.1%
5-12 (Pediatric)	0	0.0%	0	0.0%	8	0.3%	5	0.2%	13	0.8%
13-19	9	2.3%	3	1.5%	18	0.7%	27	1.0%	45	0.8%
20-29	118	29.6%	39	15.2%	389	14.1%	173	6.3%	562	10.2%
30-39	117	29.3%	82	31.9%	842	30.5%	605	22.1%	1447	23.5%
40-49	97	24.3%	87	33.9%	873	31.6%	1088	39.8%	1961	35.7%
50-59	48	12.0%	34	13.2%	487	17.6%	626	22.9%	1113	20.3%
60+	9	2.3%	12	4.7%	135	4.9%	208	7.6%	343	6.2%
TOTAL	399	100.0%	257	100.0%	2760	100.0%	2732	100.0%	5492	100.0%

HIV case reporting began in 1994.

* Cases with missing race or gender were excluded from percent distributions.

** For incident cases, age was at time of diagnosis. For prevalent cases, age was as of 6/30/07.

PRINCE GEORGE'S COUNTY HIV/AIDS EPIDEMIOLOGICAL PROFILE
June 30, 2008

Section V - Prince George's County HIV/AIDS Case Expanded Demographics

Total HIV/AIDS Prevalence (Living Cases) on 6/30/07 as Reported through 6/30/08

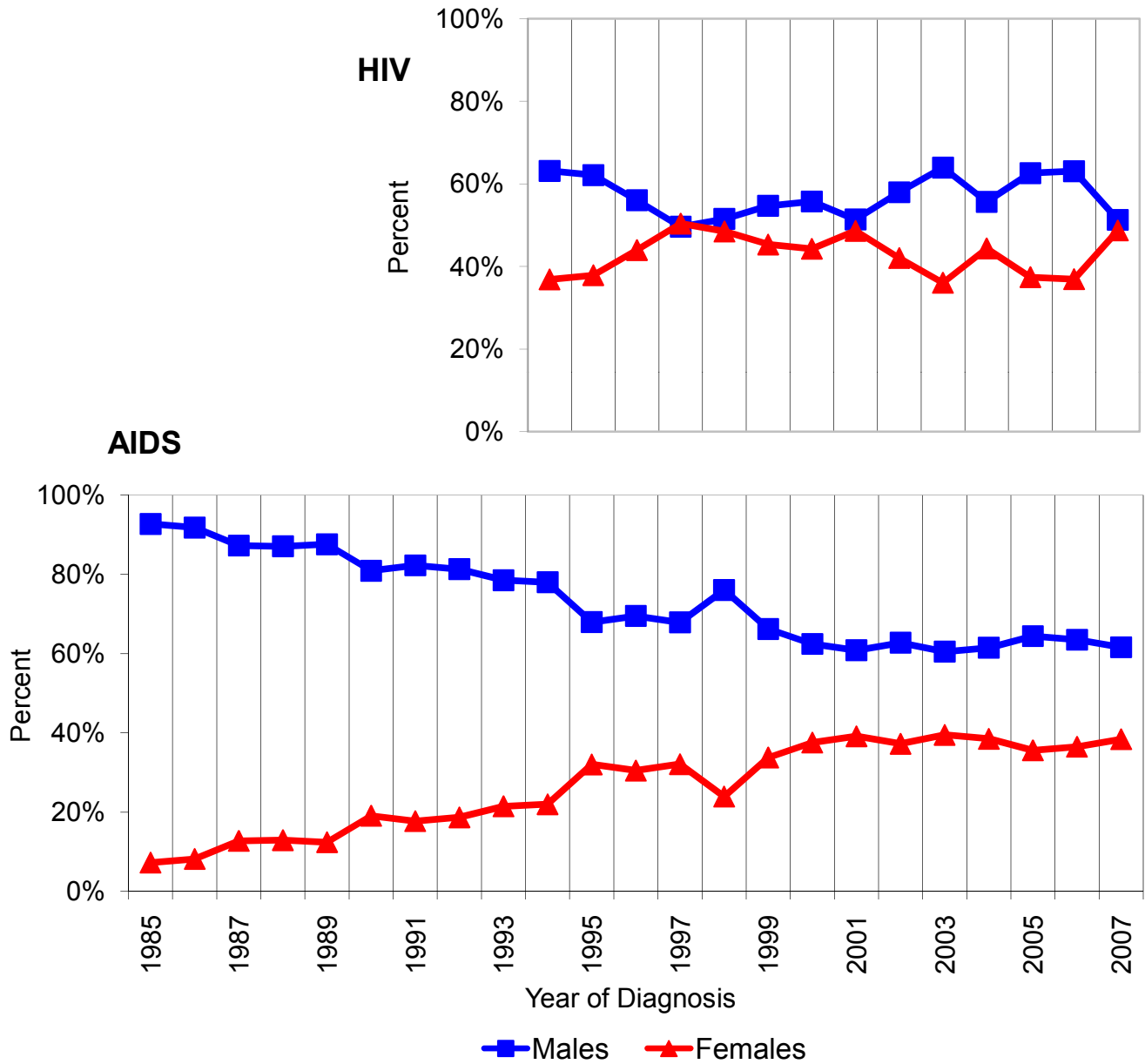
GENDER/AGE	RACE/ETHNICITY					Total	%
	<u>White</u>	<u>African-American</u>	<u>Other</u>	<u>Missing Race/Ethnicity</u>			
	No.	No.	No.	No.	No.		
<u>Male</u>							
<5 (Pediatric)	0	1	0	3	4	0.1%	
5-12 (Pediatric)	0	3	1	0	4	0.6%	
13-19	0	17	0	1	18	0.5%	
20-29	8	244	15	65	332	10.0%	
30-39	34	520	49	132	735	22.2%	
40-49	92	941	61	146	1240	37.5%	
50-59	74	569	24	79	746	22.6%	
60+	19	171	8	27	225	6.1%	
SUBTOTAL	227	2466	158	453	3304	100.0%	
<u>Female</u>							
<5 (Pediatric)	0	0	0	4	4	0.2%	
5-12 (Pediatric)	0	6	1	1	8	1.2%	
13-19	2	22	0	3	27	1.2%	
20-29	1	143	13	70	227	10.4%	
30-39	16	500	41	154	711	32.6%	
40-49	31	546	32	110	719	33.0%	
50-59	16	286	18	44	364	16.7%	
60+	4	90	4	20	118	5.4%	
SUBTOTAL	70	1593	109	406	2178	100.0%	
<u>Missing Gender</u>	2	0	0	8	10		
TOTAL	299	4059	267	867	5492		

HIV case reporting began in 1994.
 Age was as of 6/30/07.

PRINCE GEORGE'S COUNTY HIV/AIDS EPIDEMIOLOGICAL PROFILE
June 30, 2008

Section VI - Prince George's County HIV and AIDS Case Gender Trends

Proportions by Gender of Incident (Newly Diagnosed) Cases during each Calendar Year as Reported through 6/30/08



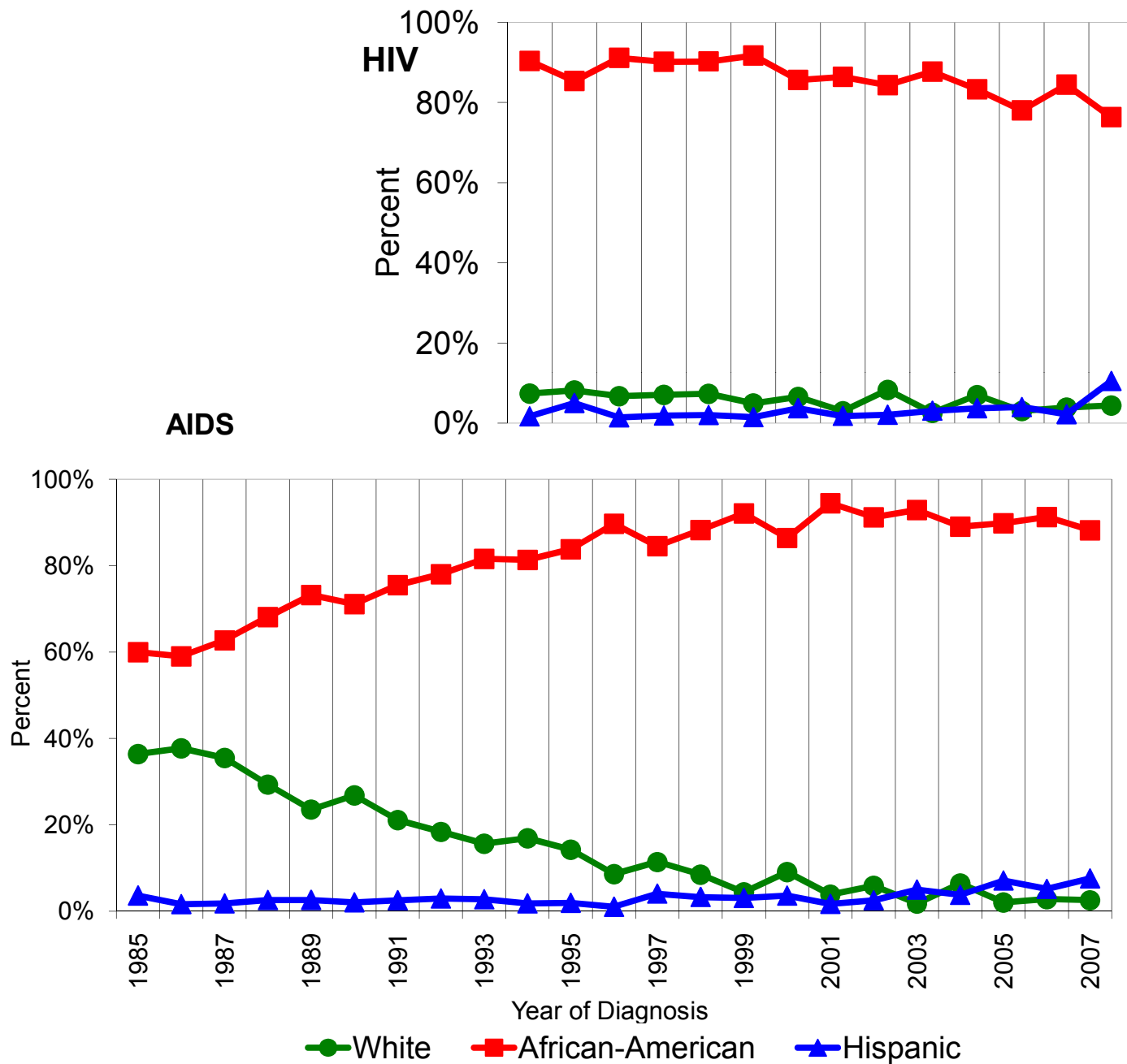
Percent distributions excluded cases with missing gender.
 HIV case reporting began in 1994.

PRINCE GEORGE'S COUNTY HIV/AIDS EPIDEMIOLOGICAL PROFILE

June 30, 2008

Section VII - Prince George's County HIV and AIDS Case Race/Ethnicity Trends

Proportions by Race/Ethnicity of Incident (Newly Diagnosed) Cases during each Calendar Year as Reported through 6/30/08



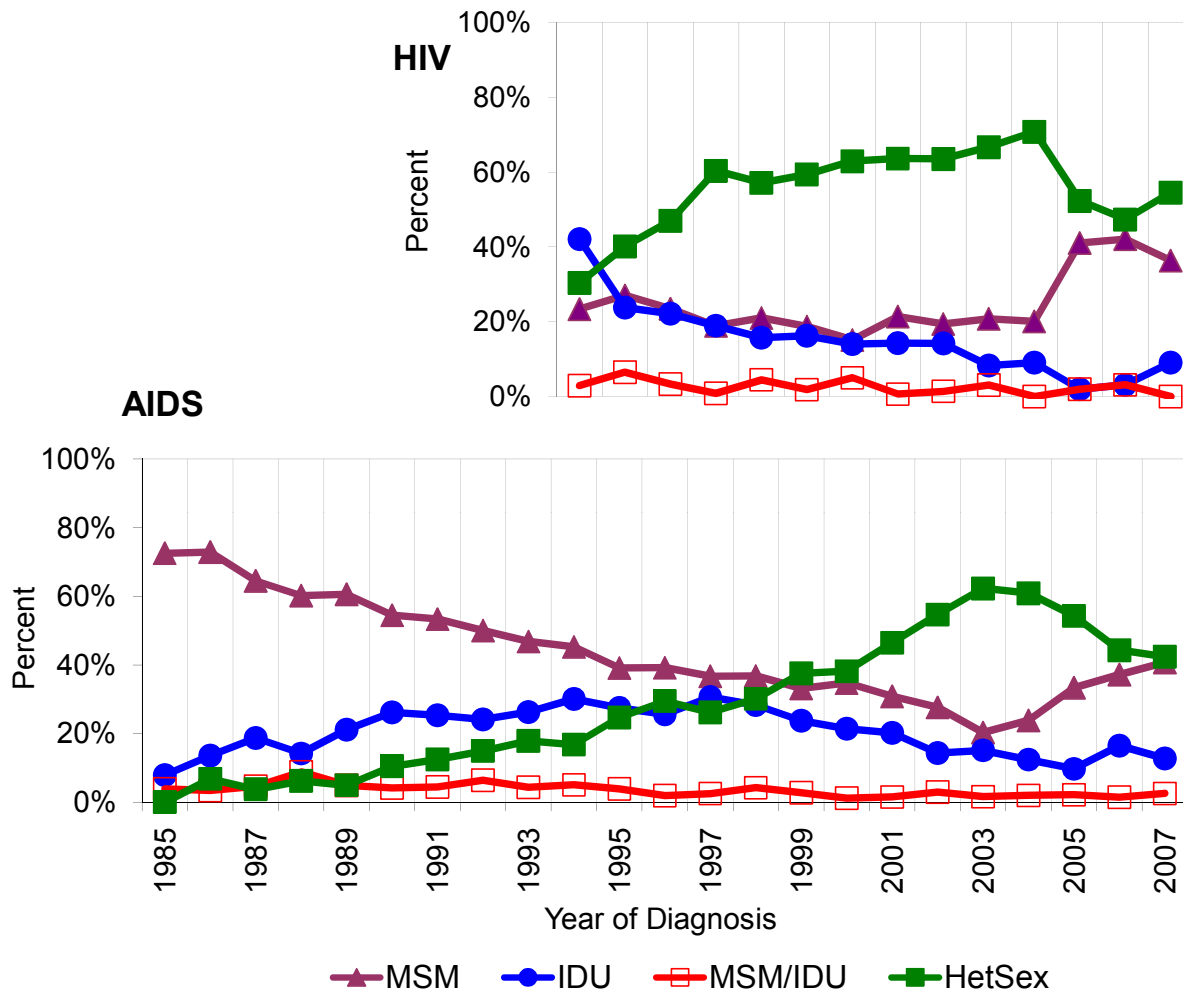
Percent distributions excluded cases with missing race/ethnicity.
 HIV case reporting began in 1994.

PRINCE GEORGE'S COUNTY HIV/AIDS EPIDEMIOLOGICAL PROFILE

June 30, 2008

Section VIII - Prince George's County AIDS Case Exposure Category Trends

Proportions by Exposure Category of Incident (Newly Diagnosed) AIDS Cases during each Calendar Year as Reported through 6/30/08



Other exposure categories (not shown) that accounted for small percentages of cases included hemophiliacs, transfusion recipients, pediatric transmissions and occupational exposures.

Percent distributions excluded cases with exposure category under investigation and risk not specified.

Prince George's County data currently have exposure on 41% of HIV cases and 85% of AIDS cases. HIV case reporting began in 1994.

MSM = Men who have sex with men

IDU = Injection drug users

MSM/IDU = Men who have sex with men and are injection drug users

HetSex = Heterosexual contact

PRINCE GEORGE'S COUNTY HIV/AIDS EPIDEMIOLOGICAL PROFILE - June 30, 2008

Section IX - Prince George's County HIV and AIDS Case Reports by ZIP Code

Cumulative Events Reported through 6/30/08

ZIP CODE	HIV Cases				AIDS Cases		AIDS Deaths	
	by Code		by Name		Cumulative		Cumulative	
	Non-AIDS		Non-AIDS					
No.	%	No.	%	No.	%	No.	%	
20601	0	0.0%	0	0.0%	0	0.0%	0	0.0%
20607	12	0.5%	3	0.4%	17	0.3%	7	0.3%
20608	3	0.1%	0	0.0%	7	0.1%	5	0.2%
20613	4	0.2%	5	0.7%	23	0.4%	12	0.5%
20623	3	0.1%	2	0.3%	15	0.3%	5	0.2%
20705	24	1.0%	7	0.9%	103	2.0%	48	2.0%
20706	100	4.0%	48	6.5%	197	3.8%	84	3.5%
20707	54	2.2%	19	2.6%	93	1.8%	53	2.2%
20708	63	2.5%	11	1.5%	88	1.7%	36	1.5%
20710	66	2.7%	10	1.3%	97	1.8%	58	2.4%
20712	44	1.8%	11	1.5%	119	2.3%	58	2.4%
20715	8	0.3%	10	1.3%	52	1.0%	33	1.4%
20716	22	0.9%	8	1.1%	66	1.3%	32	1.3%
20720	19	0.8%	12	1.6%	22	0.4%	5	0.2%
20721	40	1.6%	10	1.3%	61	1.2%	13	0.5%
20722	14	0.6%	3	0.4%	44	0.8%	23	1.0%
20723	10	0.4%	5	0.7%	13	0.2%	2	0.1%
20724	0	0.0%	2	0.3%	5	0.1%	1	0.0%
20735	82	3.3%	22	3.0%	159	3.0%	61	2.5%
20737	60	2.4%	24	3.2%	132	2.5%	65	2.7%
20740	26	1.0%	9	1.2%	67	1.3%	38	1.6%
20742	5	0.2%	1	0.1%	10	0.2%	3	0.1%
20743	314	12.6%	74	10.0%	555	10.6%	242	10.1%
20744	79	3.2%	27	3.6%	248	4.7%	124	5.2%
20745	110	4.4%	35	4.7%	286	5.5%	128	5.3%
20746	181	4.1%	37	3.2%	271	3.3%	137	3.7%
20747	213	8.6%	42	5.7%	405	7.7%	201	8.4%
20748	141	3.5%	34	3.2%	345	4.6%	161	4.8%
20749	0	0.0%	0	0.0%	7	0.1%	4	0.2%
20762	3	0.1%	0	0.0%	5	0.1%	3	0.1%
20764	0	0.0%	0	0.0%	1	0.0%	0	0.0%
20769	1	0.0%	2	0.3%	15	0.3%	11	0.5%
20770	63	2.5%	25	3.4%	119	2.3%	44	1.8%
20771	1	0.0%	0	0.0%	1	0.0%	1	0.0%
20772	98	3.9%	28	3.8%	200	3.8%	100	4.2%
20774	48	1.9%	29	3.9%	78	1.5%	9	0.4%
20781	22	0.9%	10	1.3%	67	1.3%	35	1.5%
20782	70	2.8%	33	4.4%	225	4.3%	81	3.4%
20783	101	4.1%	31	4.2%	286	5.5%	133	5.5%
20784	102	4.1%	38	5.1%	237	4.5%	96	4.0%
20785	267	10.7%	74	10.0%	485	9.2%	235	9.8%
20871	0	0.0%	0	0.0%	1	0.0%	1	0.0%
20903	0	0.0%	0	0.0%	1	0.0%	1	0.0%
20904	0	0.0%	0	0.0%	0	0.0%	0	0.0%
20912	11	0.4%	1	0.1%	17	0.3%	11	0.5%
Missing ZIP*	306		8		64		24	
Prince George's County	2790	100.0%	750	100.0%	5309	100.0%	2424	100.0%

Laboratory reporting of HIV cases by code existed from June 1, 1994 to April 24, 2007.
 Provider and laboratory reporting of HIV cases by name has existed since April 24, 2007.

Maryland is re-reporting code HIV cases by name, therefore, the same person may appear as a code HIV case and as a name HIV case.

HIV cases reported by name since 4/24/07 may also have been reported as AIDS cases.

Non-AIDS cumulative HIV cases included all HIV cases reported through the end of the period, that had not been reported as AIDS cases by the end of the period.

AIDS deaths included all causes of death.

The median time from diagnosis to report was one month for HIV code cases, 15 months for HIV name cases, and three months for AIDS cases.

* Cases with missing ZIP were excluded from percent distributions.