

MONTGOMERY COUNTY HIV/AIDS EPIDEMIOLOGICAL PROFILE

Fourth Quarter 2007 - Data reported through December 31, 2007

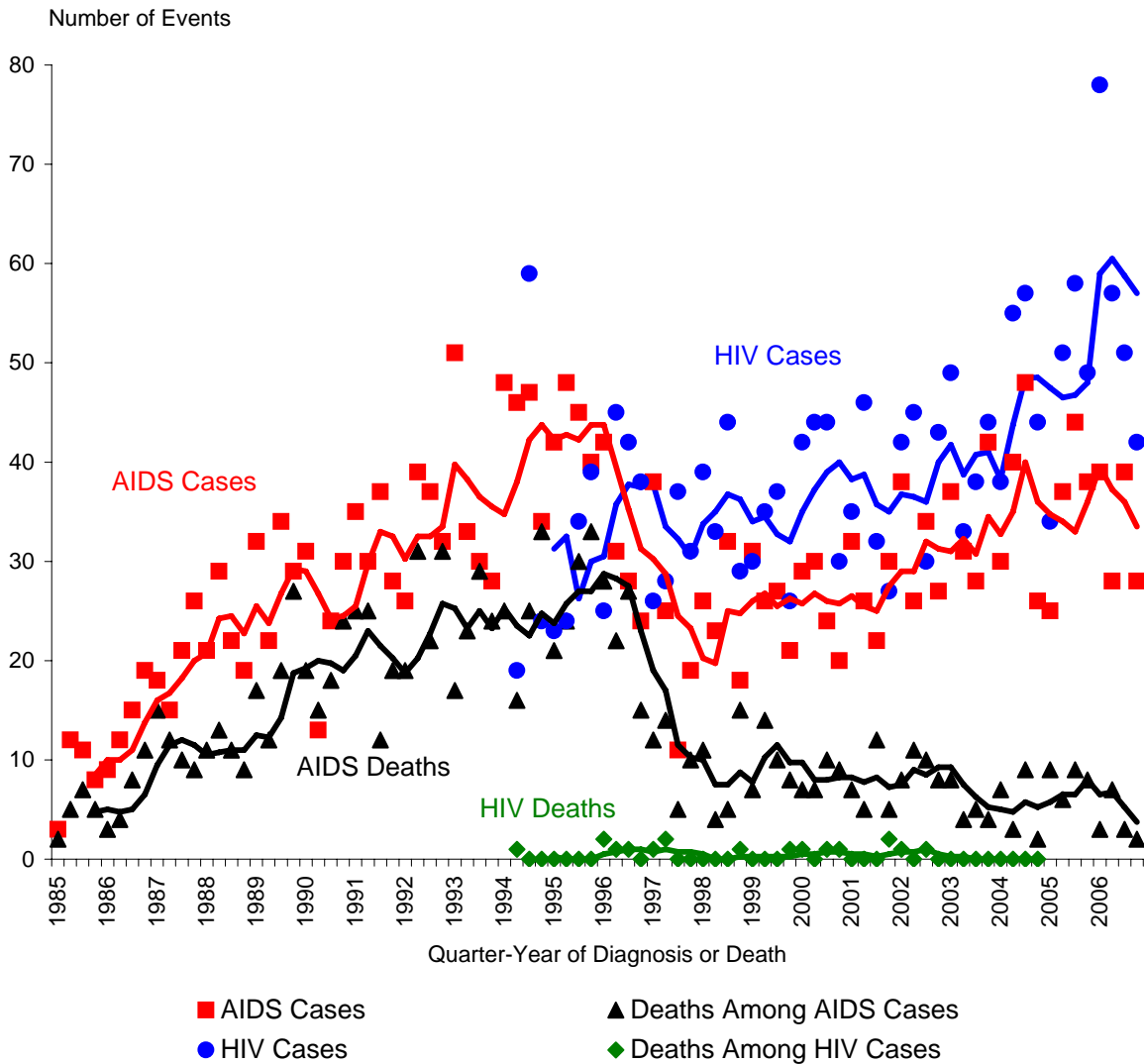
AIDS Administration
Maryland Department of Health and Mental Hygiene
www.dhmh.state.md.us/AIDS/
1-800-358-9001

SPECIAL NOTE ON HIV REPORTING

The Maryland HIV/AIDS Reporting Act of 2007 became law on April 24, 2007. The law expanded HIV reporting and required that HIV cases be reported by name. The reporting period presented in this report includes the first months of the new reporting, however, most of the tables and figures are unaffected by this change. Section IX has been modified to include the changes and future reports will have additional modifications. For additional information on HIV reporting please visit the AIDS Administration web site at the above address.

Section I - Montgomery County HIV and AIDS Case Trends

Incident (Newly Diagnosed) HIV and AIDS Cases and Deaths among HIV and AIDS Cases by Quarter-Year through Fourth Quarter 2006 as Reported through 12/31/07



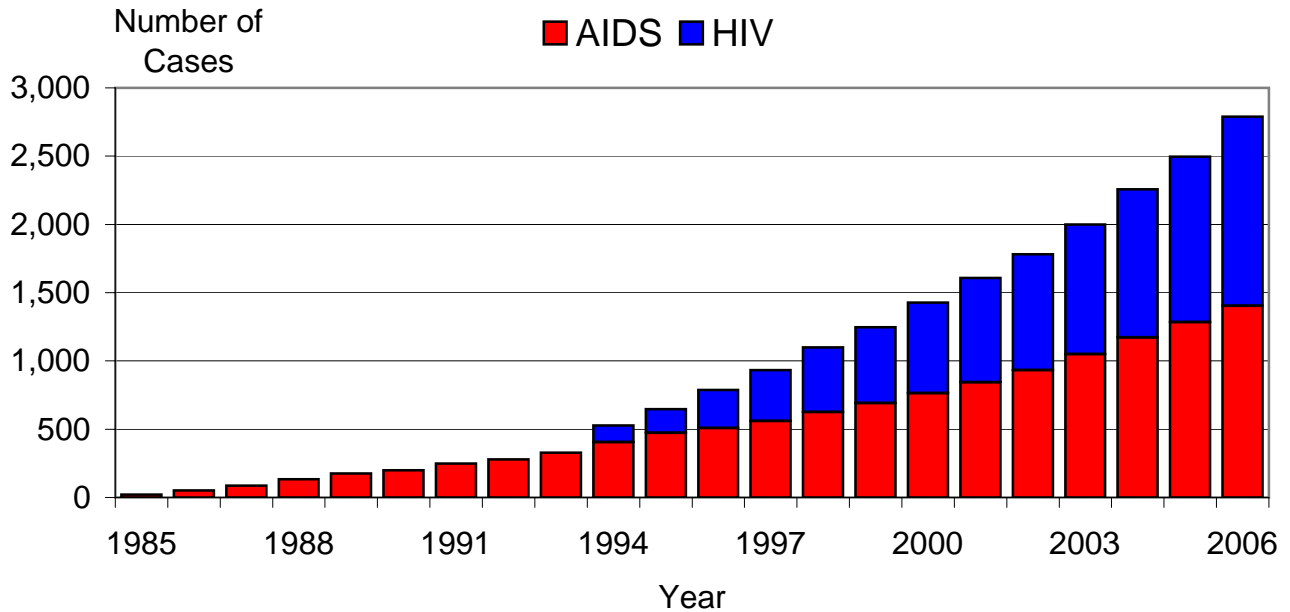
HIV case reporting began in June of 1994.
Trend lines are weighted moving averages (over 4 quarters).

MONTGOMERY COUNTY HIV/AIDS EPIDEMIOLOGICAL PROFILE

December 31, 2007

Section II - Montgomery County HIV and AIDS Case Prevalence Trends

Prevalent (Living) HIV and AIDS Cases on December 31st of Each Year as Reported through 12/31/07



YEAR	HIV	AIDS	Total HIV/AIDS
1985		22	22
1986		51	51
1987		86	86
1988		133	133
1989		175	175
1990		199	199
1991		248	248
1992		280	280
1993		329	329
1994	123	405	528
1995	174	474	648
1996	279	508	787
1997	371	561	932
1998	475	625	1,100
1999	557	691	1,248
2000	664	763	1,427
2001	763	844	1,607
2002	849	932	1,781
2003	951	1,049	2,000
2004	1,086	1,172	2,258
2005	1,213	1,284	2,497
2006	1,387	1,403	2,790

Prevalent cases are alive on December 31st of the given year.
HIV case reporting began in 1994.

MONTGOMERY COUNTY HIV/AIDS EPIDEMIOLOGICAL PROFILE

December 31, 2007

Section III - Montgomery County HIV and AIDS Case Geography

Incidence (Newly Diagnosed Cases) during 1/1/06-12/31/06 and Prevalence (Living Cases) on 12/31/06 as Reported through 12/31/07

ZIP CODE	Incidence				Prevalence				Total HIV/AIDS	
	HIV		AIDS		HIV		AIDS			
	No.	%	No.	%	No.	%	No.	%	No.	%
20707	0	0.0%	0	0.0%	0	0.0%	0	0.0%	0	0.0%
20783	0	0.0%	0	0.0%	0	0.0%	0	0.0%	0	0.0%
20812	0	0.0%	0	0.0%	0	0.0%	0	0.0%	0	0.0%
20814	3	1.9%	1	0.8%	9	0.8%	22	1.6%	31	1.3%
20815	3	1.9%	0	0.0%	9	0.8%	10	0.7%	19	0.8%
20816	0	0.0%	0	0.0%	3	0.3%	10	0.7%	13	0.5%
20817	1	0.6%	1	0.8%	9	0.8%	12	0.9%	21	0.9%
20818	0	0.0%	0	0.0%	0	0.0%	2	0.1%	2	0.1%
20832	0	0.0%	0	0.0%	8	0.7%	5	0.4%	13	0.5%
20833	0	0.0%	0	0.0%	1	0.1%	2	0.1%	3	0.1%
20837	0	0.0%	0	0.0%	0	0.0%	3	0.2%	3	0.1%
20838	0	0.0%	0	0.0%	0	0.0%	0	0.0%	0	0.0%
20839	0	0.0%	0	0.0%	0	0.0%	0	0.0%	0	0.0%
20841	3	1.9%	0	0.0%	10	0.9%	0	0.0%	10	0.4%
20842	0	0.0%	0	0.0%	3	0.3%	1	0.1%	4	0.2%
20850	4	2.6%	4	3.1%	36	3.3%	30	2.2%	66	2.7%
20851	1	0.6%	0	0.0%	15	1.4%	8	0.6%	23	0.9%
20852	1	0.6%	4	3.1%	38	3.5%	35	2.6%	73	3.0%
20853	3	1.9%	4	3.1%	30	2.8%	28	2.1%	58	2.4%
20854	1	0.6%	0	0.0%	36	3.3%	24	1.8%	60	2.5%
20855	0	0.0%	3	2.3%	4	0.4%	9	0.7%	13	0.5%
20860	0	0.0%	1	0.8%	0	0.0%	3	0.2%	3	0.1%
20861	1	0.6%	0	0.0%	1	0.1%	2	0.1%	3	0.1%
20862	0	0.0%	0	0.0%	0	0.0%	0	0.0%	0	0.0%
20866	3	1.9%	1	0.8%	13	1.2%	16	1.2%	29	1.2%
20868	0	0.0%	0	0.0%	1	0.1%	1	0.1%	2	0.1%
20871	0	0.0%	1	0.8%	0	0.0%	3	0.2%	3	0.1%
20872	0	0.0%	2	1.6%	5	0.5%	5	0.4%	10	0.4%
20874	7	4.5%	5	3.9%	61	5.6%	56	4.2%	117	4.8%
20876	7	4.5%	3	2.3%	19	1.8%	17	1.3%	36	1.5%
20877	10	6.5%	7	5.5%	56	5.2%	63	4.7%	119	4.9%
20878	11	7.1%	9	7.0%	41	3.8%	49	3.6%	90	3.7%
20879	8	5.2%	3	2.3%	33	3.0%	39	2.9%	72	3.0%
20880	0	0.0%	0	0.0%	0	0.0%	1	0.1%	1	0.0%
20882	0	0.0%	1	0.8%	1	0.1%	2	0.1%	3	0.1%
20886	3	1.9%	3	2.3%	28	2.6%	39	2.9%	67	2.8%
20895	1	0.6%	0	0.0%	11	1.0%	25	1.9%	36	1.5%
20896	0	0.0%	0	0.0%	0	0.0%	0	0.0%	0	0.0%
20901	8	5.2%	8	6.3%	60	5.5%	86	6.4%	146	6.0%
20902	12	7.8%	10	7.8%	117	10.8%	99	7.3%	216	8.9%
20903	6	3.9%	7	5.5%	43	4.0%	78	5.8%	121	5.0%
20904	14	9.1%	11	8.6%	78	7.2%	139	10.3%	217	8.9%
20905	6	3.9%	3	2.3%	11	1.0%	15	1.1%	26	1.1%
20906	14	9.1%	9	7.0%	96	8.8%	135	10.0%	231	9.5%
20910	7	4.5%	15	11.7%	97	8.9%	149	11.1%	246	10.1%
20912	16	10.4%	12	9.4%	102	9.4%	125	9.3%	227	9.3%
21771	0	0.0%	0	0.0%	0	0.0%	0	0.0%	0	0.0%
Missing ZIP*	73		6		302		55		357	
Montgomery County	227	100.0%	134	100.0%	1387	100.0%	1403	100.0%	2790	100.0%

Incident cases were cases newly diagnosed during the 12 month period.

Prevalent cases were alive on 12/31/06.

HIV case reporting began in 1994.

For cases reported 1/1/07 through 12/31/07, the median time from diagnosis to report was one month for HIV cases and three months for AIDS cases.

* Cases with missing ZIP were excluded from percent distributions.

MONTGOMERY COUNTY HIV/AIDS EPIDEMIOLOGICAL PROFILE - December 31, 2007

Section IV - Montgomery County HIV and AIDS Case Demographics

Incidence (Newly Diagnosed Cases) during 1/1/06-12/31/06 and Prevalence (Living Cases) on 12/31/06 as Reported through 12/31/07

<u>GENDER</u>	Incidence				Prevalence					
	<u>HIV</u>		<u>AIDS</u>		<u>HIV</u>		<u>AIDS</u>		<u>Total HIV/AIDS</u>	
	No.	%	No.	%	No.	%	No.	%	No.	%
Male	130	57.3%	80	59.7%	808	58.5%	910	64.9%	1718	61.7%
Female	97	42.7%	54	40.3%	573	41.5%	493	35.1%	1066	38.3%
Missing*	0				6				6	
TOTAL	227	100.0%	134	100.0%	1387	100.0%	1403	100.0%	2790	100.0%

<u>RACE/ETHNICITY</u>	Incidence				Prevalence					
	<u>HIV</u>		<u>AIDS</u>		<u>HIV</u>		<u>AIDS</u>		<u>Total HIV/AIDS</u>	
	No.	%	No.	%	No.	%	No.	%	No.	%
White	8	4.7%	15	11.2%	118	11.6%	308	22.0%	426	10.1%
African-American	102	59.3%	97	72.4%	612	60.0%	912	65.0%	1524	62.9%
Hispanic	17	9.9%	17	12.7%	97	9.5%	163	11.6%	260	10.7%
Other	45	26.2%	5	3.7%	193	18.9%	20	1.4%	213	8.8%
Missing*	55				367				367	
TOTAL	227	100.0%	134	100.0%	1387	100.0%	1403	100.0%	2790	100.0%

<u>AGE**</u>	Incidence				Prevalence					
	<u>HIV</u>		<u>AIDS</u>		<u>HIV</u>		<u>AIDS</u>		<u>Total HIV/AIDS</u>	
	No.	%	No.	%	No.	%	No.	%	No.	%
<5 (Pediatric)	0	0.0%	0	0.0%	3	0.2%	1	0.1%	4	0.1%
5-12 (Pediatric)	0	0.0%	0	0.0%	12	0.9%	3	0.2%	15	0.8%
13-19	3	1.3%	1	1.5%	4	0.3%	10	0.7%	14	0.5%
20-29	45	19.8%	30	22.4%	144	10.4%	80	5.7%	224	8.0%
30-39	85	37.4%	45	33.6%	441	31.8%	340	24.2%	781	23.5%
40-49	65	28.6%	37	27.6%	487	35.1%	550	39.2%	1037	37.2%
50-59	22	9.7%	18	13.4%	225	16.2%	321	22.9%	546	19.6%
60+	7	3.1%	3	2.2%	71	5.1%	98	7.0%	169	6.1%
TOTAL	227	100.0%	134	100.0%	1387	100.0%	1403	100.0%	2790	100.0%

Incident cases were cases newly diagnosed during the 12 month period.

Prevalent cases were alive on 12/31/06.

HIV case reporting began in 1994.

* Cases with missing race or gender were excluded from percent distributions.

** For incident cases, age was at time of diagnosis. For prevalent cases, age was as of 12/31/06.

MONTGOMERY COUNTY HIV/AIDS EPIDEMIOLOGICAL PROFILE

December 31, 2007

Section V - Montgomery County HIV/AIDS Case Expanded Demographics

Total HIV/AIDS Prevalence (Living Cases) on 12/31/06 as Reported through 12/31/07

GENDER/AGE	RACE/ETHNICITY					<u>Total</u>	%
	<u>White</u>	<u>African-American</u>	<u>Other</u>	<u>Missing Race/Ethnicity</u>	No.		
	No.	No.	No.	No.	No.		
<u>Male</u>							
<5 (Pediatric)	0	1	0	3	4	0.2%	
5-12 (Pediatric)	1	2	3	5	11	0.6%	
13-19	0	3	1	0	4	0.2%	
20-29	16	49	15	17	97	5.6%	
30-39	48	184	101	58	391	22.8%	
40-49	152	364	115	73	704	41.0%	
50-59	95	200	56	36	387	22.5%	
60+	32	53	16	19	120	6.1%	
SUBTOTAL	344	856	307	211	1718	100.0%	
<u>Female</u>							
<5 (Pediatric)	0	0	0	0	0	0.0%	
5-12 (Pediatric)	1	1	0	1	3	1.2%	
13-19	0	7	0	3	10	0.9%	
20-29	9	67	24	27	127	11.9%	
30-39	21	237	77	53	388	36.4%	
40-49	33	205	38	54	330	31.0%	
50-59	13	116	22	8	159	14.9%	
60+	4	35	5	5	49	4.6%	
SUBTOTAL	81	668	166	151	1066	100.0%	
<u>Missing Gender</u>	1	0	0	5	6		
TOTAL	426	1524	473	367	2790		

Prevalent cases were alive on 12/31/06.

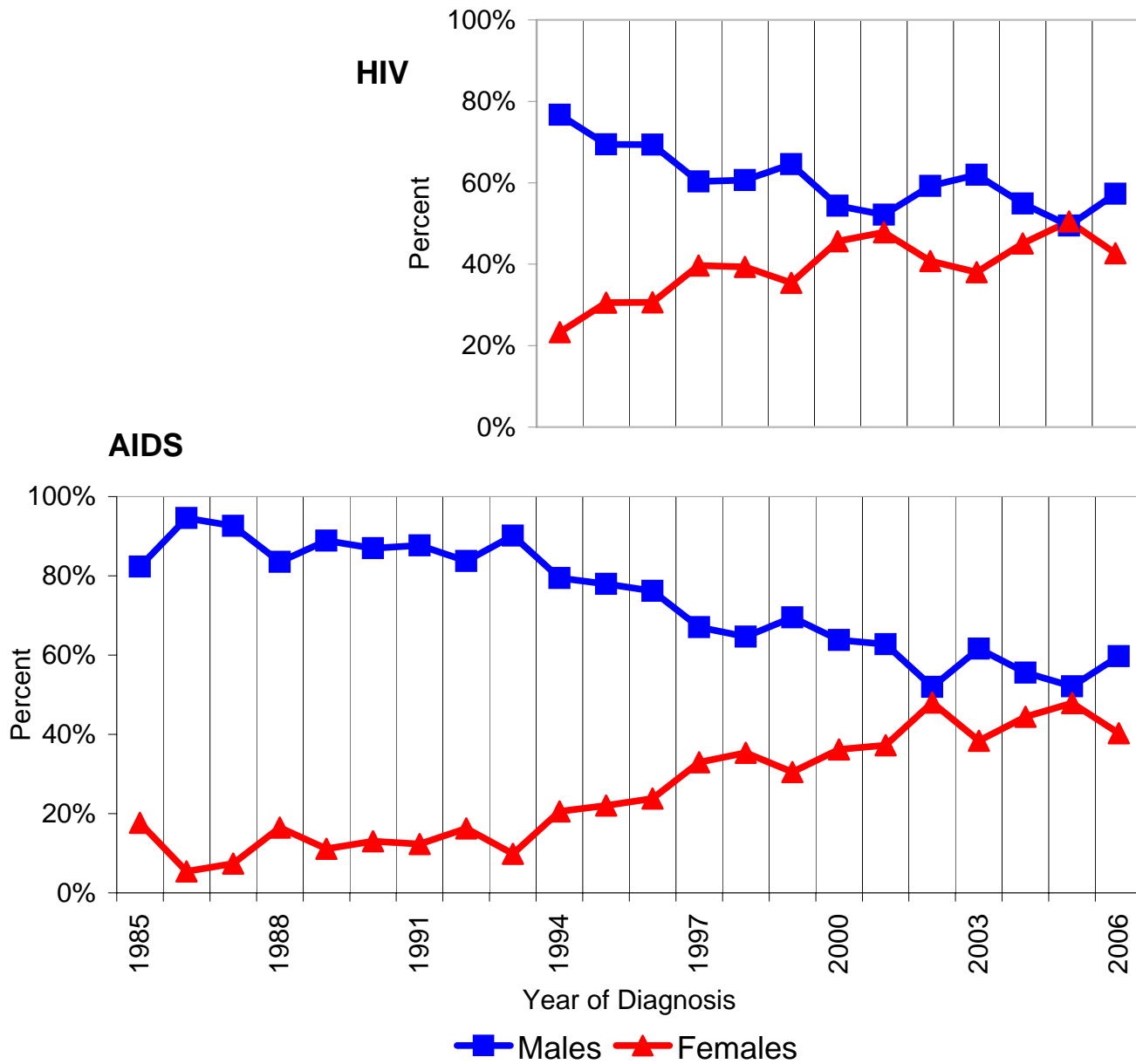
HIV case reporting began in 1994.

Age was as of 12/31/06.

MONTGOMERY COUNTY HIV/AIDS EPIDEMIOLOGICAL PROFILE
December 31, 2007

Section VI - Montgomery County HIV and AIDS Case Gender Trends

Proportions by Gender of Incident (Newly Diagnosed) Cases during each Calendar Year as Reported through 12/31/07



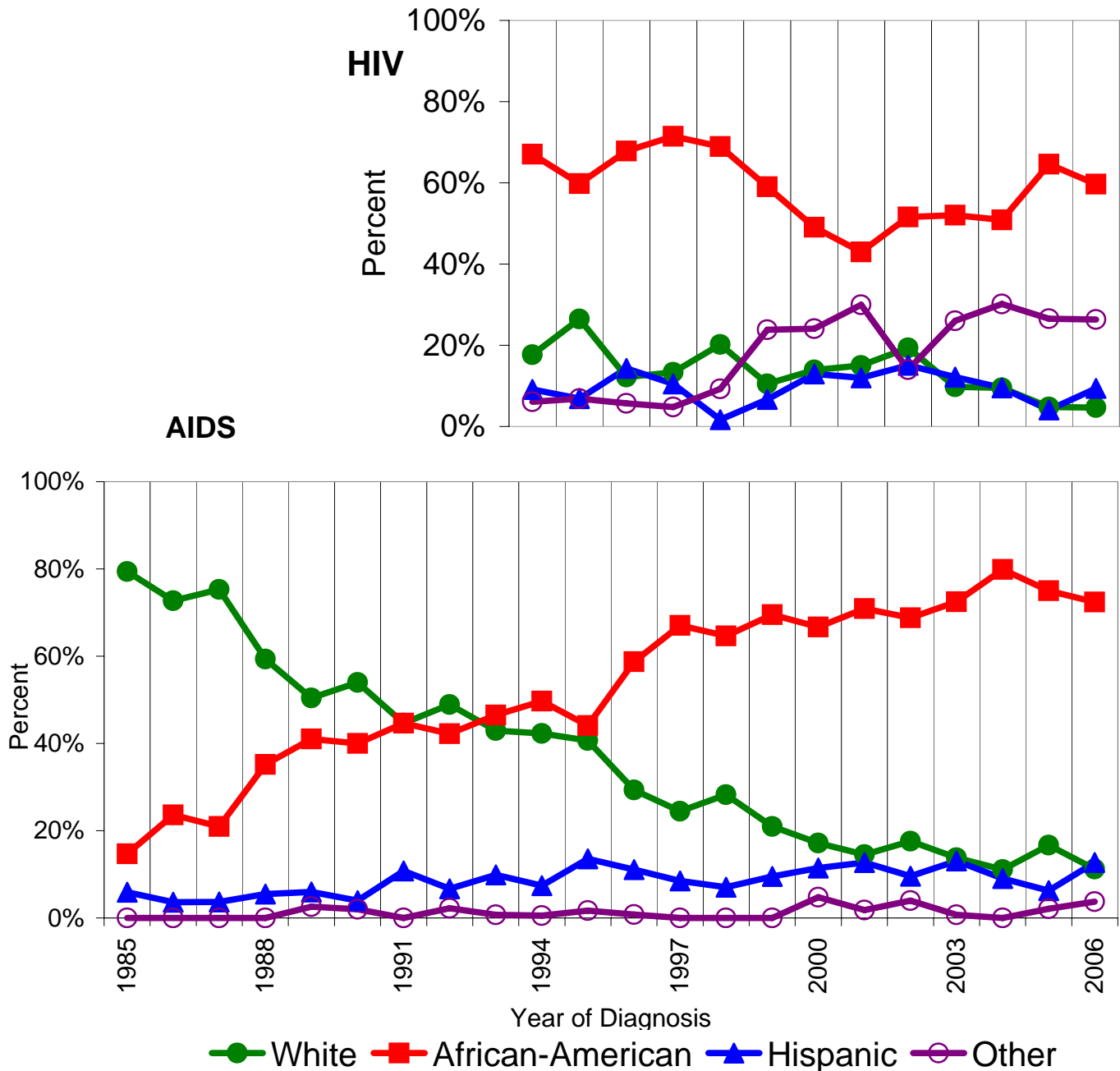
Percent distributions excluded cases with missing gender.
 HIV case reporting began in 1994.

MONTGOMERY COUNTY HIV/AIDS EPIDEMIOLOGICAL PROFILE

December 31, 2007

Section VII - Montgomery County HIV and AIDS Case Race/Ethnicity Trends

Proportions by Race/Ethnicity of Incident (Newly Diagnosed) Cases during each Calendar Year as Reported through 12/31/07



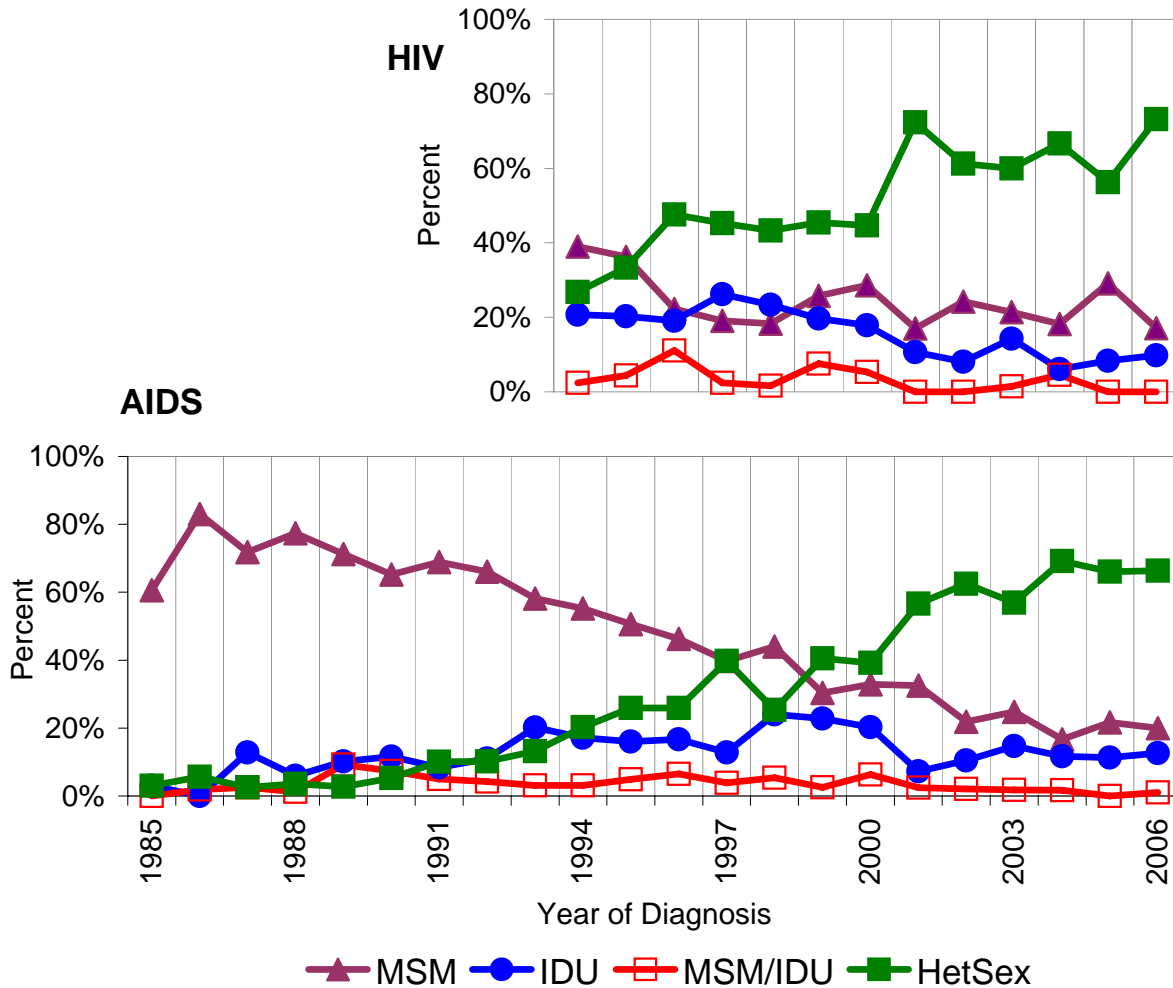
Percent distributions excluded cases with missing race/ethnicity.
 HIV case reporting began in 1994.

MONTGOMERY COUNTY HIV/AIDS EPIDEMIOLOGICAL PROFILE

December 31, 2007

Section VIII - Montgomery County AIDS Case Exposure Category Trends

Proportions by Exposure Category of Incident (Newly Diagnosed) AIDS Cases during each Calendar Year as Reported through 12/31/07



Other exposure categories (not shown) that accounted for small percentages of cases included hemophiliacs, transfusion recipients, pediatric transmissions and occupational exposures.

Percent distributions excluded cases with exposure category under investigation and risk not specified.

Prince George's County data currently have exposure on 41% of HIV cases and 85% of AID HIV case reporting began in 1994.

MSM = Men who have sex with men

IDU = Injection drug users

MSM/IDU = Men who have sex with men and are injection drug users

HetSex = Heterosexual contact

MONTGOMERY COUNTY HIV/AIDS EPIDEMIOLOGICAL PROFILE - December 31, 2007

Section IX - Montgomery County HIV and AIDS Case Reports by ZIP Code

Cumulative Events Reported through 12/31/07

ZIP CODE	HIV Cases				AIDS Cases		AIDS Deaths	
	by Code		by Name		Cumulative		Cumulative	
	No.	%	No.	%	No.	%	No.	%
20707	0	0.0%	0	0.0%	0	0.0%	0	0.0%
20783	0	0.0%	0	0.0%	0	0.0%	0	0.0%
20812	0	0.0%	0	0.0%	0	0.0%	0	0.0%
20814	11	0.9%	1	0.5%	57	2.2%	34	3.0%
20815	12	1.0%	3	1.4%	45	1.7%	35	3.1%
20816	3	0.3%	0	0.0%	20	0.8%	10	0.9%
20817	9	0.8%	2	0.9%	46	1.8%	33	2.9%
20818	0	0.0%	0	0.0%	6	0.2%	4	0.4%
20832	14	1.2%	2	0.9%	19	0.7%	12	1.1%
20833	1	0.1%	1	0.5%	6	0.2%	4	0.4%
20837	0	0.0%	1	0.5%	6	0.2%	3	0.3%
20838	0	0.0%	0	0.0%	1	0.0%	1	0.1%
20839	0	0.0%	0	0.0%	0	0.0%	0	0.0%
20841	9	0.8%	2	0.9%	2	0.1%	1	0.1%
20842	3	0.3%	0	0.0%	6	0.2%	5	0.4%
20850	37	3.2%	3	1.4%	68	2.6%	33	2.9%
20851	15	1.3%	0	0.0%	24	0.9%	16	1.4%
20852	40	3.4%	7	3.3%	64	2.5%	28	2.5%
20853	30	2.6%	5	2.3%	57	2.2%	27	2.4%
20854	38	3.3%	6	2.8%	47	1.8%	23	2.0%
20855	4	0.3%	2	0.9%	28	1.1%	19	1.7%
20860	2	0.2%	1	0.5%	3	0.1%	0	0.0%
20861	1	0.1%	0	0.0%	4	0.2%	2	0.2%
20862	0	0.0%	0	0.0%	0	0.0%	0	0.0%
20866	15	1.3%	2	0.9%	31	1.2%	14	1.2%
20868	1	0.1%	0	0.0%	1	0.0%	0	0.0%
20871	0	0.0%	3	1.4%	5	0.2%	1	0.1%
20872	5	0.4%	1	0.5%	13	0.5%	8	0.7%
20874	64	5.5%	14	6.6%	90	3.5%	31	2.7%
20876	19	1.6%	1	0.5%	22	0.9%	4	0.4%
20877	58	5.0%	11	5.2%	111	4.3%	40	3.5%
20878	45	3.9%	2	0.9%	92	3.6%	39	3.4%
20879	35	3.0%	6	2.8%	104	4.0%	63	5.5%
20880	0	0.0%	0	0.0%	1	0.0%	0	0.0%
20882	1	0.1%	1	0.5%	6	0.2%	3	0.3%
20886	31	2.7%	9	4.2%	46	1.8%	6	0.5%
20895	11	0.9%	1	0.5%	60	2.3%	34	3.0%
20896	0	0.0%	0	0.0%	0	0.0%	0	0.0%
20901	66	5.7%	9	4.2%	170	6.6%	78	6.9%
20902	123	10.5%	8	3.8%	184	7.1%	76	6.7%
20903	48	4.1%	9	4.2%	134	5.2%	55	4.8%
20904	88	7.5%	25	11.7%	225	8.7%	76	6.7%
20905	13	1.1%	0	0.0%	27	1.0%	11	1.0%
20906	104	8.9%	26	12.2%	232	9.0%	90	7.9%
20910	102	8.7%	25	11.7%	300	11.6%	146	12.8%
20912	108	9.3%	24	11.3%	215	8.3%	72	6.3%
21771	0	0.0%	0	0.0%	0	0.0%	0	0.0%
Missing ZIP*	378		8		102		43	
Montgomery County	1544	100.0%	221	100.0%	2680	100.0%	1180	100.0%

Laboratory reporting of HIV cases by code existed from June 1, 1994 to April 24, 2007.
 Provider and laboratory reporting of HIV cases by name has existed since April 24, 2007.

Maryland is re-reporting code HIV cases by name, therefore, the same person may appear as a code HIV case and as a name HIV case.

HIV cases reported by name since 4/24/07 may also have been reported as AIDS cases.
 Non-AIDS cumulative HIV cases included all HIV cases reported through the end of the period, that had not been reported as AIDS cases by the end of the period.
 AIDS deaths included all causes of death.

The median time from diagnosis to report was one month for cumulative non-AIDS HIV code cases, 4 months for HIV name cases, and five months for cumulative AIDS cases.