

**Maryland Department of Health and Mental Hygiene
AIDS Administration
Center for Surveillance and Epidemiology**

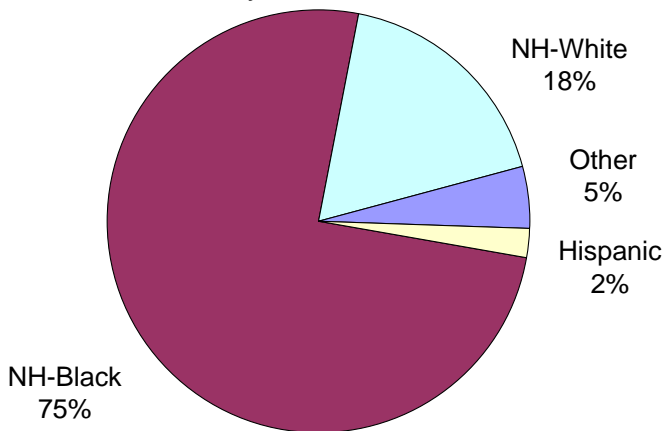
Maryland HIV/AIDS Statistics Fact Sheet
April 18, 2008

The Numbers

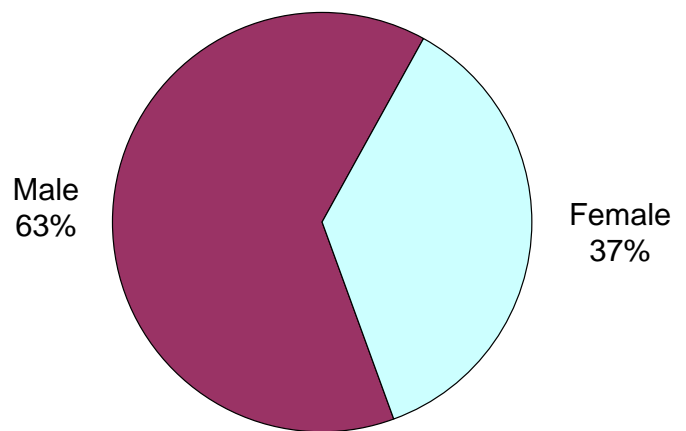
| | | |
|--|--------------|------------------------------------|
| HIV Incidence (new cases) during 2006 | 2,144 cases | 40.5 cases per 100,000 population |
| AIDS Incidence (new cases) during 2006 | 1,233 cases | 23.3 cases per 100,000 population |
| AIDS Deaths during 2006 | 386 deaths | |
| HIV/AIDS Prevalence (living cases) on 12/31/06 | 32,811 cases | 619.5 cases per 100,000 population |

Demographics

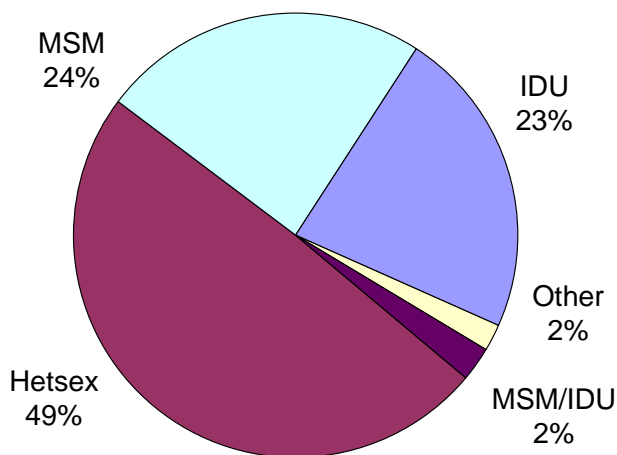
Race/Ethnicity for 2006 HIV Incidence



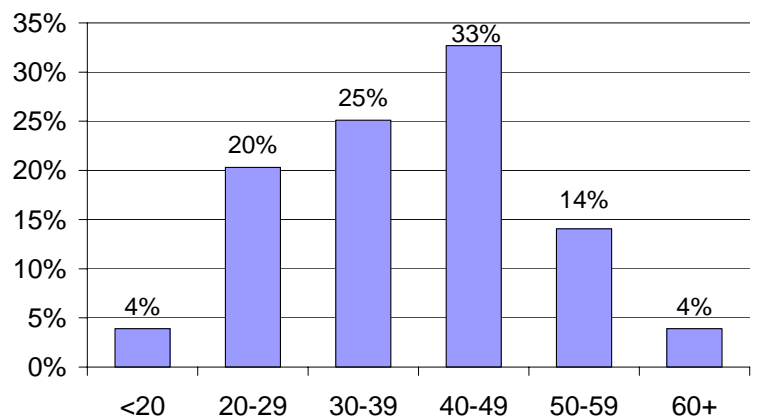
Gender for 2006 HIV Incidence



Risk for 2006 HIV Incidence

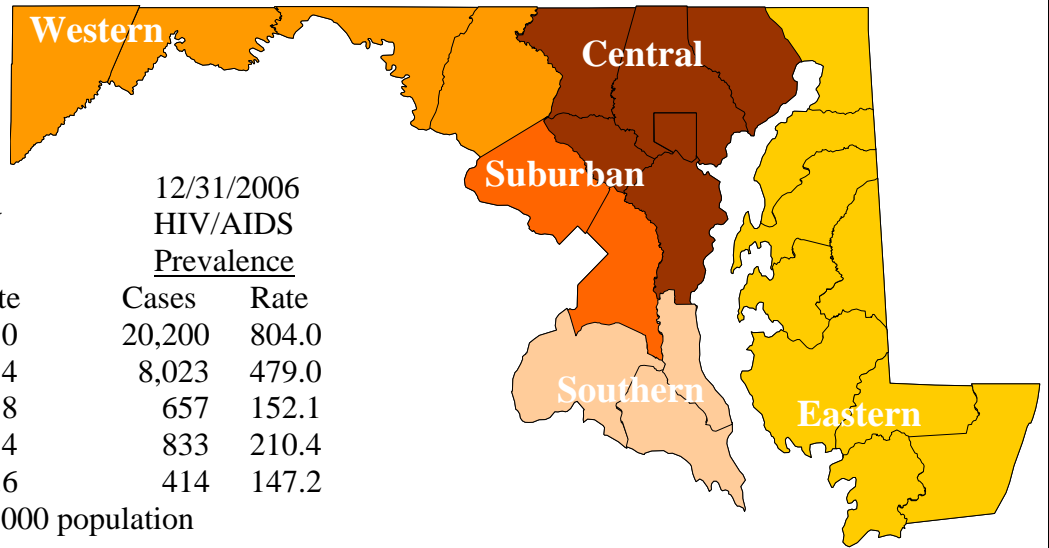


Age at Diagnosis for 2006 HIV Incidence



IDU = Injection Drug User MSM = Men who have Sex with Men Hetsex = Heterosexual

Geographic Distribution

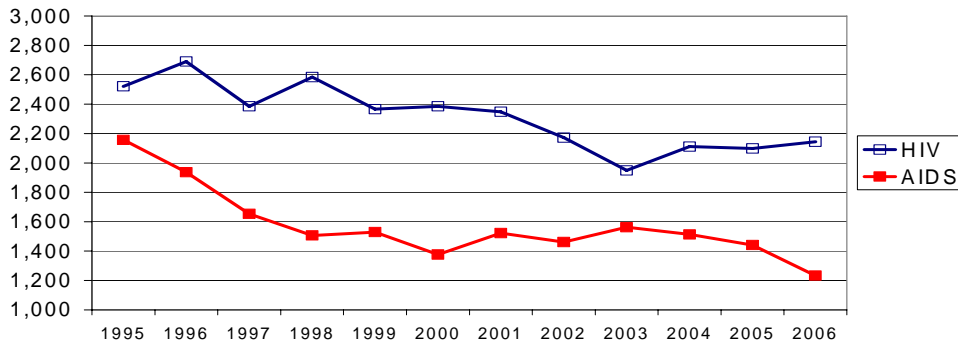


| | 2006 HIV Incidence | | 12/31/2006 HIV/AIDS Prevalence | |
|----------|--------------------|------|--------------------------------|-------|
| | Cases | Rate | Cases | Rate |
| Central | 1,357 | 54.0 | 20,200 | 804.0 |
| Suburban | 575 | 34.4 | 8,023 | 479.0 |
| Western | 64 | 14.8 | 657 | 152.1 |
| Eastern | 53 | 13.4 | 833 | 210.4 |
| Southern | 27 | 9.6 | 414 | 147.2 |

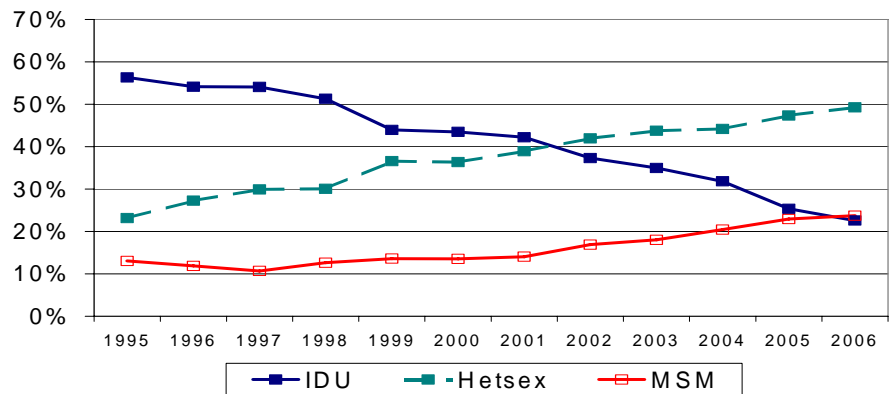
Rates are per 100,000 population

Trends

Maryland HIV and AIDS Incidence



Risk by Year of HIV Diagnosis



National Rankings - Maryland

AIDS Cases Reported during 2006 1,626 cases 29.0 cases per 100,000 population
 The rate of case reports ranks **THIRD** among states and territories in the U.S.

AIDS Prevalence (living cases) on 12/31/06 14,581 cases
 The number of prevalent cases ranks **NINTH** among states and territories in the U.S.