

**Maryland Department of Health and Mental Hygiene  
AIDS Administration  
Center for Surveillance and Epidemiology**

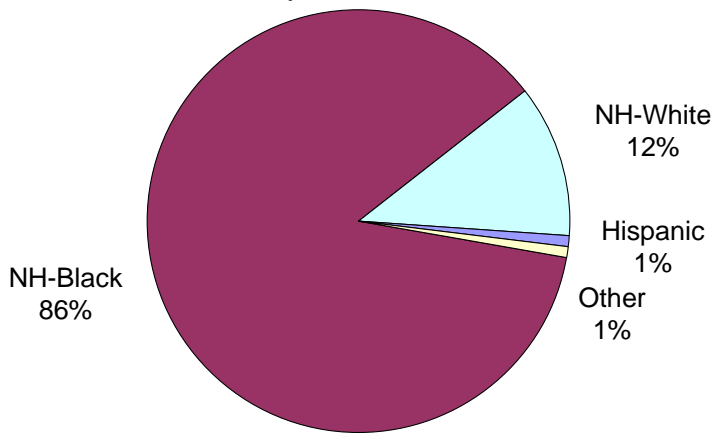
Baltimore City HIV/AIDS Statistics Fact Sheet  
April 18, 2008

The Numbers

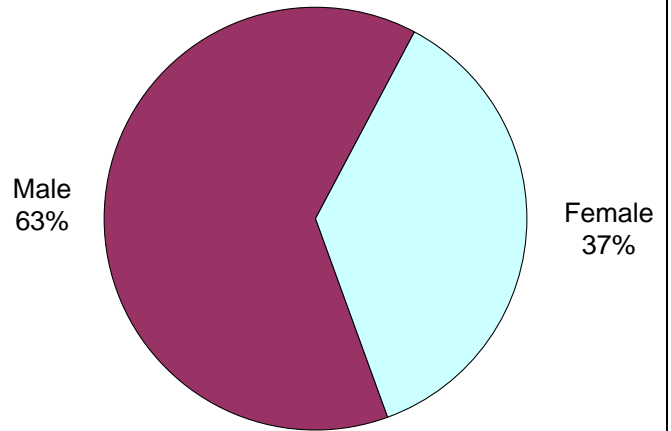
HIV Incidence (new cases) during 2006	1,022 cases	157.0 cases per 100,000 population
AIDS Incidence (new cases) during 2006	558 cases	85.7 cases per 100,000 population
AIDS Deaths during 2006	226 deaths	
HIV/AIDS Prevalence (living cases) on 12/31/06	15,984 cases	2,454.7 cases per 100,000 population

Demographics

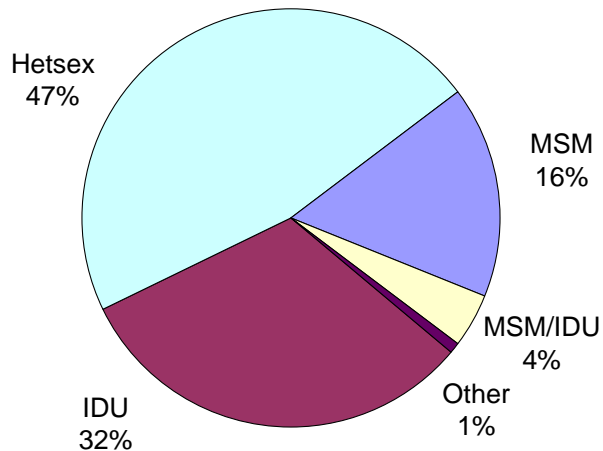
Race/Ethnicity for 2006 HIV Incidence



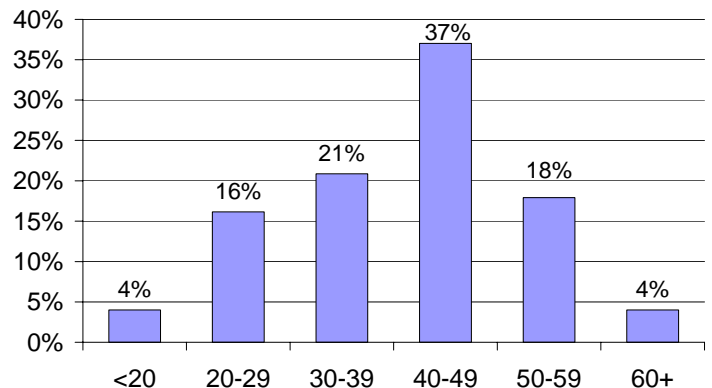
Gender for 2006 HIV Incidence



Risk for 2006 HIV Incidence



Age at Diagnosis for 2006 HIV Incidence

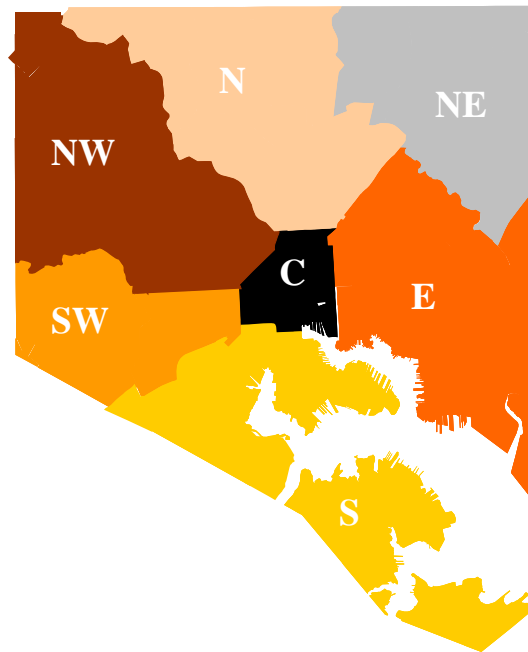


IDU = Injection Drug User    MSM = Men who have Sex with Men    Hetsex = Heterosexual

## Geographic Distribution

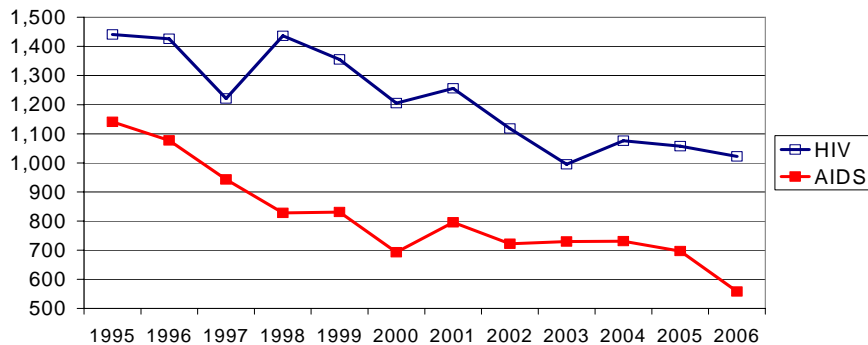
	2006 HIV Incidence		12/31/2006 HIV/AIDS Prevalence	
	Cases	Rate	Cases	Rate
Central	106	274.1	2,111	5,459.2
Northwest	255	161.4	4,637	2,934.9
East	171	149.9	2,817	2,468.6
Southwest	102	137.3	1,802	2,425.6
South	65	118.9	775	1,418.0
North	127	107.4	1,951	1,650.0
Northeast	85	91.2	1,013	1,087.0

Rates are per 100,000 population

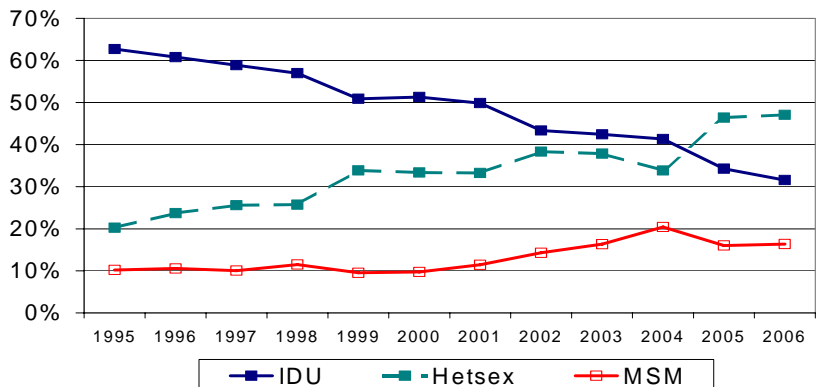


## Trends

**Baltimore City HIV and AIDS Incidence**



**Risk by Year of HIV Diagnosis**



## National Rankings (metropolitan area)

The Baltimore-Towson metropolitan area includes Baltimore City and Anne Arundel, Baltimore, Carroll, Harford, Howard, and Queen Anne's counties.

AIDS Cases Reported during 2006                      1,001 cases      37.7 cases per 100,000 population  
The rate of case reports ranks **SECOND** among metropolitan areas in the U.S.

AIDS Prevalence (living cases) on 12/31/04                      8,142 cases  
The number of prevalent cases ranks **TENTH** among metropolitan areas in the U.S.