

# BALTIMORE COUNTY HIV/AIDS EPIDEMIOLOGICAL PROFILE

## Fourth Quarter 2007 - Data reported through December 31, 2007

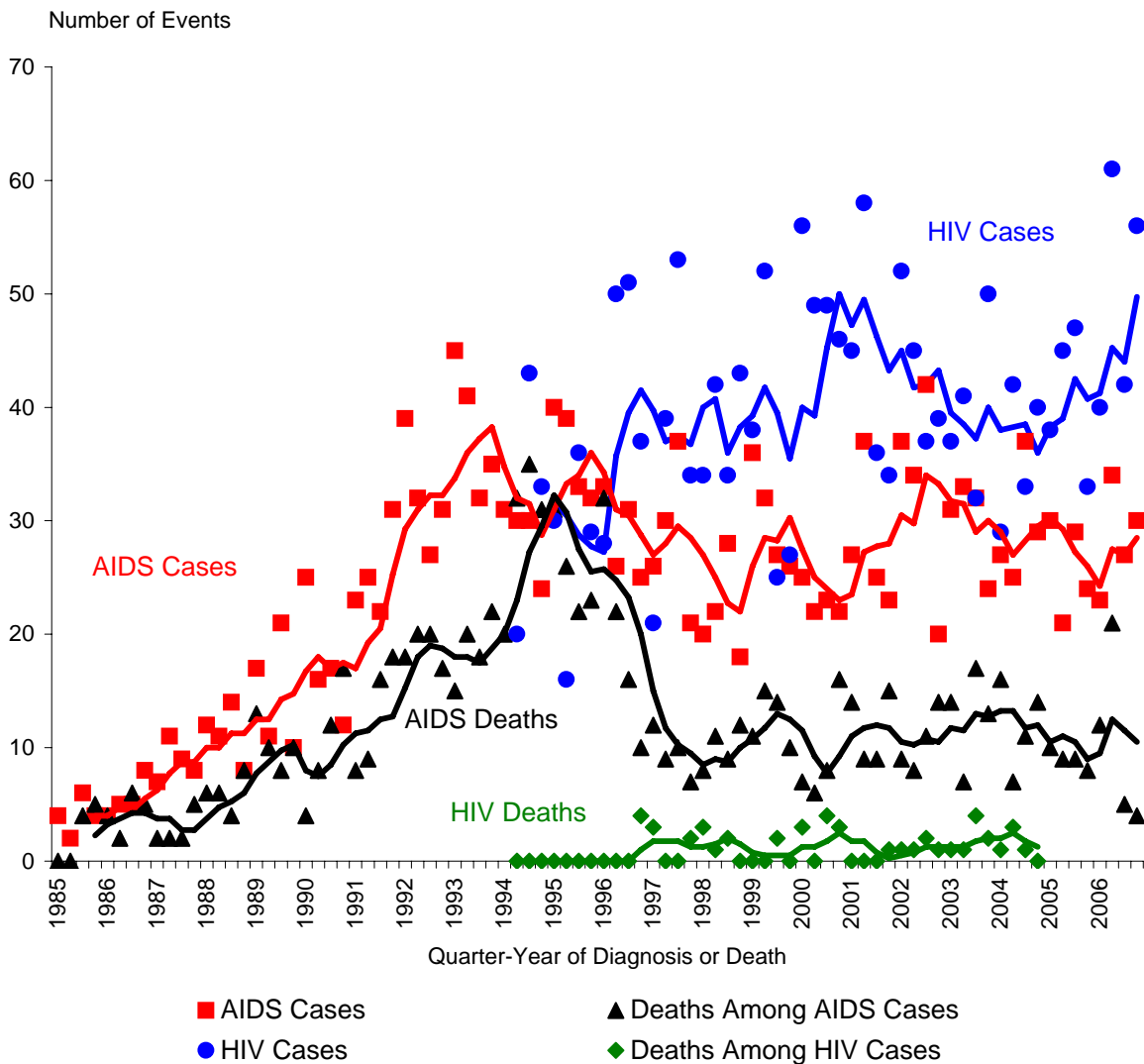
AIDS Administration  
 Maryland Department of Health and Mental Hygiene  
[www.dhmd.state.md.us/AIDS/](http://www.dhmd.state.md.us/AIDS/)  
 1-800-358-9001

### SPECIAL NOTE ON HIV REPORTING

The Maryland HIV/AIDS Reporting Act of 2007 became law on April 24, 2007. The law expanded HIV reporting and required that HIV cases be reported by name. The reporting period presented in this report includes the first months of the new reporting, however, most of the tables and figures are unaffected by this change. Section IX has been modified to include the changes and future reports will have additional modifications. For additional information on HIV reporting please visit the AIDS Administration web site at the above address.

### Section I - Baltimore County HIV and AIDS Case Trends

**Incident (Newly Diagnosed) HIV and AIDS Cases and Deaths among HIV and AIDS Cases by Quarter-Year through Fourth Quarter 2006 as Reported through 12/31/07**



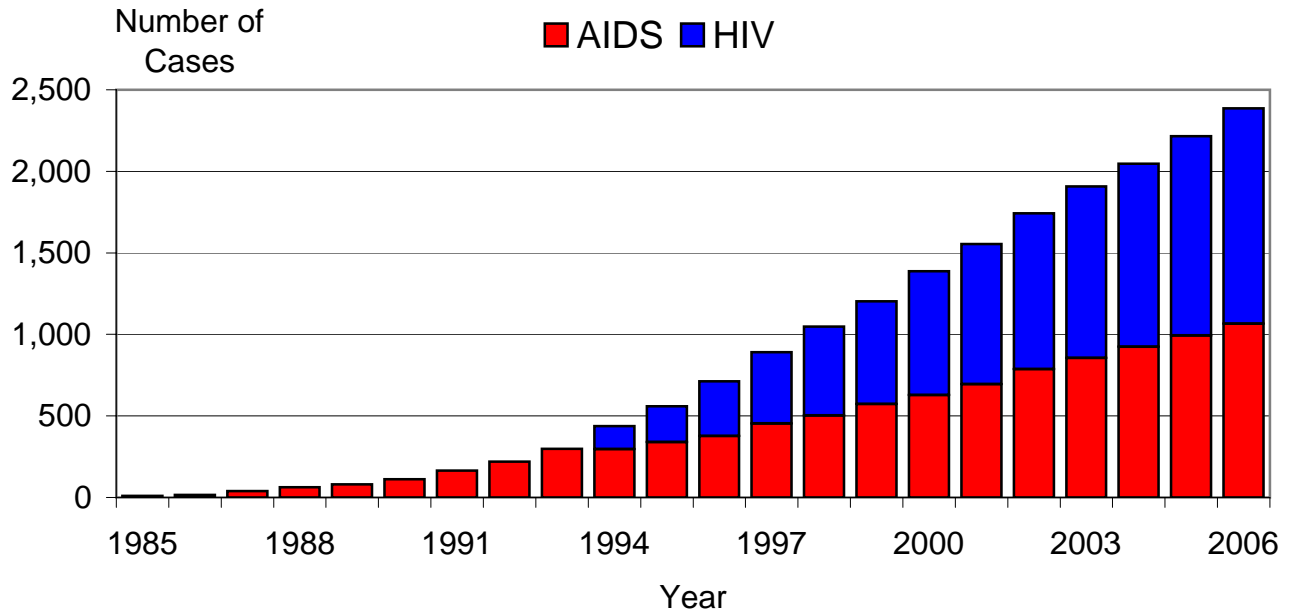
HIV case reporting began in June of 1994.  
 Trend lines are weighted moving averages (over 4 quarters).

# BALTIMORE COUNTY HIV/AIDS EPIDEMIOLOGICAL PROFILE

December 31, 2007

## Section II - Baltimore County HIV and AIDS Case Prevalence Trends

Prevalent (Living) HIV and AIDS Cases on December 31st of Each Year as Reported through 12/31/07



| YEAR | HIV   | AIDS  | Total HIV/AIDS |
|------|-------|-------|----------------|
| 1985 |       | 10    | 10             |
| 1986 |       | 15    | 15             |
| 1987 |       | 39    | 39             |
| 1988 |       | 62    | 62             |
| 1989 |       | 80    | 80             |
| 1990 |       | 111   | 111            |
| 1991 |       | 164   | 164            |
| 1992 |       | 220   | 220            |
| 1993 |       | 298   | 298            |
| 1994 | 142   | 296   | 438            |
| 1995 | 220   | 339   | 559            |
| 1996 | 337   | 376   | 713            |
| 1997 | 437   | 453   | 890            |
| 1998 | 546   | 502   | 1,048          |
| 1999 | 629   | 573   | 1,202          |
| 2000 | 760   | 628   | 1,388          |
| 2001 | 859   | 695   | 1,554          |
| 2002 | 957   | 786   | 1,743          |
| 2003 | 1,052 | 855   | 1,907          |
| 2004 | 1,122 | 925   | 2,047          |
| 2005 | 1,222 | 993   | 2,215          |
| 2006 | 1,322 | 1,065 | 2,387          |

Prevalent cases are alive on December 31st of the given year.  
HIV case reporting began in 1994.

**BALTIMORE COUNTY HIV/AIDS EPIDEMIOLOGICAL PROFILE**  
**December 31, 2007**

**Section III - Baltimore County HIV and AIDS Case Geography**

**Incidence (Newly Diagnosed Cases) during 1/1/06-12/31/06 and Prevalence (Living Cases) on 12/31/06 as Reported through 12/31/07**

| ZIP CODE                | Incidence |        |      |        | Prevalence |        |      |        | Total HIV/AIDS |        |
|-------------------------|-----------|--------|------|--------|------------|--------|------|--------|----------------|--------|
|                         | HIV       |        | AIDS |        | HIV        |        | AIDS |        | No.            | %      |
|                         | No.       | %      | No.  | %      | No.        | %      | No.  | %      | No.            | %      |
| 21013                   | 0         | 0.0%   | 1    | 0.9%   | 2          | 0.2%   | 0    | 0.0%   | 2              | 0.1%   |
| 21030                   | 1         | 0.6%   | 4    | 3.6%   | 18         | 1.5%   | 26   | 2.5%   | 44             | 1.9%   |
| 21031                   | 0         | 0.0%   | 0    | 0.0%   | 0          | 0.0%   | 0    | 0.0%   | 0              | 0.0%   |
| 21043                   | 0         | 0.0%   | 0    | 0.0%   | 0          | 0.0%   | 0    | 0.0%   | 0              | 0.0%   |
| 21051                   | 0         | 0.0%   | 0    | 0.0%   | 1          | 0.1%   | 0    | 0.0%   | 1              | 0.0%   |
| 21052                   | 0         | 0.0%   | 0    | 0.0%   | 8          | 0.7%   | 0    | 0.0%   | 8              | 0.4%   |
| 21053                   | 0         | 0.0%   | 0    | 0.0%   | 1          | 0.1%   | 3    | 0.3%   | 4              | 0.2%   |
| 21057                   | 0         | 0.0%   | 0    | 0.0%   | 1          | 0.1%   | 0    | 0.0%   | 1              | 0.0%   |
| 21071                   | 0         | 0.0%   | 0    | 0.0%   | 0          | 0.0%   | 0    | 0.0%   | 0              | 0.0%   |
| 21074                   | 0         | 0.0%   | 0    | 0.0%   | 0          | 0.0%   | 0    | 0.0%   | 0              | 0.0%   |
| 21082                   | 0         | 0.0%   | 1    | 0.9%   | 0          | 0.0%   | 1    | 0.1%   | 1              | 0.0%   |
| 21085                   | 0         | 0.0%   | 0    | 0.0%   | 0          | 0.0%   | 0    | 0.0%   | 0              | 0.0%   |
| 21087                   | 0         | 0.0%   | 0    | 0.0%   | 1          | 0.1%   | 2    | 0.2%   | 3              | 0.1%   |
| 21093                   | 0         | 0.0%   | 3    | 2.7%   | 4          | 0.3%   | 16   | 1.5%   | 20             | 0.9%   |
| 21102                   | 0         | 0.0%   | 0    | 0.0%   | 0          | 0.0%   | 0    | 0.0%   | 0              | 0.0%   |
| 21104                   | 0         | 0.0%   | 0    | 0.0%   | 0          | 0.0%   | 0    | 0.0%   | 0              | 0.0%   |
| 21105                   | 0         | 0.0%   | 0    | 0.0%   | 0          | 0.0%   | 0    | 0.0%   | 0              | 0.0%   |
| 21111                   | 1         | 0.6%   | 0    | 0.0%   | 3          | 0.2%   | 1    | 0.1%   | 4              | 0.2%   |
| 21117                   | 14        | 8.2%   | 3    | 2.7%   | 69         | 5.7%   | 57   | 5.4%   | 126            | 5.6%   |
| 21120                   | 0         | 0.0%   | 1    | 0.9%   | 0          | 0.0%   | 1    | 0.1%   | 1              | 0.0%   |
| 21128                   | 0         | 0.0%   | 0    | 0.0%   | 3          | 0.2%   | 1    | 0.1%   | 4              | 0.2%   |
| 21131                   | 1         | 0.6%   | 1    | 0.9%   | 2          | 0.2%   | 4    | 0.4%   | 6              | 0.3%   |
| 21133                   | 10        | 5.9%   | 7    | 6.4%   | 76         | 6.3%   | 89   | 8.5%   | 165            | 7.3%   |
| 21136                   | 3         | 1.8%   | 2    | 1.8%   | 25         | 2.1%   | 20   | 1.9%   | 45             | 2.0%   |
| 21152                   | 0         | 0.0%   | 0    | 0.0%   | 1          | 0.1%   | 4    | 0.4%   | 5              | 0.2%   |
| 21155                   | 0         | 0.0%   | 0    | 0.0%   | 1          | 0.1%   | 0    | 0.0%   | 1              | 0.0%   |
| 21156                   | 0         | 0.0%   | 0    | 0.0%   | 0          | 0.0%   | 0    | 0.0%   | 0              | 0.0%   |
| 21161                   | 0         | 0.0%   | 0    | 0.0%   | 0          | 0.0%   | 0    | 0.0%   | 0              | 0.0%   |
| 21162                   | 0         | 0.0%   | 0    | 0.0%   | 1          | 0.1%   | 1    | 0.1%   | 2              | 0.1%   |
| 21163                   | 0         | 0.0%   | 0    | 0.0%   | 1          | 0.1%   | 1    | 0.1%   | 2              | 0.1%   |
| 21204                   | 6         | 3.5%   | 2    | 1.8%   | 53         | 4.4%   | 18   | 1.7%   | 71             | 3.1%   |
| 21206                   | 2         | 1.2%   | 0    | 0.0%   | 13         | 1.1%   | 7    | 0.7%   | 20             | 0.9%   |
| 21207                   | 13        | 7.6%   | 12   | 10.9%  | 145        | 12.0%  | 111  | 10.5%  | 256            | 11.3%  |
| 21208                   | 5         | 2.9%   | 5    | 4.5%   | 57         | 4.7%   | 63   | 6.0%   | 120            | 5.3%   |
| 21209                   | 3         | 1.8%   | 0    | 0.0%   | 13         | 1.1%   | 9    | 0.9%   | 22             | 1.0%   |
| 21210                   | 0         | 0.0%   | 0    | 0.0%   | 0          | 0.0%   | 0    | 0.0%   | 0              | 0.0%   |
| 21212                   | 0         | 0.0%   | 0    | 0.0%   | 3          | 0.2%   | 2    | 0.2%   | 5              | 0.2%   |
| 21215                   | 0         | 0.0%   | 0    | 0.0%   | 1          | 0.1%   | 0    | 0.0%   | 1              | 0.0%   |
| 21219                   | 1         | 0.6%   | 0    | 0.0%   | 14         | 1.2%   | 14   | 1.3%   | 28             | 1.2%   |
| 21220                   | 7         | 4.1%   | 10   | 9.1%   | 48         | 4.0%   | 45   | 4.3%   | 93             | 4.1%   |
| 21221                   | 21        | 12.4%  | 11   | 10.0%  | 107        | 8.9%   | 86   | 8.2%   | 193            | 8.6%   |
| 21222                   | 19        | 11.2%  | 10   | 9.1%   | 105        | 8.7%   | 97   | 9.2%   | 202            | 8.9%   |
| 21224                   | 1         | 0.6%   | 0    | 0.0%   | 11         | 0.9%   | 8    | 0.8%   | 19             | 0.8%   |
| 21227                   | 4         | 2.4%   | 7    | 6.4%   | 51         | 4.2%   | 51   | 4.8%   | 102            | 4.5%   |
| 21228                   | 5         | 2.9%   | 2    | 1.8%   | 60         | 5.0%   | 67   | 6.4%   | 127            | 5.6%   |
| 21229                   | 1         | 0.6%   | 0    | 0.0%   | 8          | 0.7%   | 8    | 0.8%   | 16             | 0.7%   |
| 21234                   | 11        | 6.5%   | 9    | 8.2%   | 85         | 7.1%   | 75   | 7.1%   | 160            | 7.1%   |
| 21236                   | 10        | 5.9%   | 6    | 5.5%   | 22         | 1.8%   | 22   | 2.1%   | 44             | 1.9%   |
| 21237                   | 11        | 6.5%   | 4    | 3.6%   | 47         | 3.9%   | 34   | 3.2%   | 81             | 3.6%   |
| 21239                   | 1         | 0.6%   | 0    | 0.0%   | 3          | 0.2%   | 1    | 0.1%   | 4              | 0.2%   |
| 21244                   | 18        | 10.6%  | 7    | 6.4%   | 127        | 10.5%  | 95   | 9.0%   | 222            | 9.8%   |
| 21286                   | 1         | 0.6%   | 2    | 1.8%   | 13         | 1.1%   | 13   | 1.2%   | 26             | 1.2%   |
| Missing ZIP*            | 28        |        | 4    |        | 118        |        | 12   |        | 130            |        |
| <i>Baltimore County</i> | 198       | 100.0% | 114  | 100.0% | 1322       | 100.0% | 1065 | 100.0% | 2387           | 100.0% |

Incident cases were cases newly diagnosed during the 12 month period.

Prevalent cases were alive on 12/31/06.

HIV case reporting began in 1994.

For cases reported 1/1/07 through 12/31/07, the median time from diagnosis to report was one month for HIV cases and four months for AIDS cases.

\* Cases with missing ZIP were excluded from percent distributions.

## BALTIMORE COUNTY HIV/AIDS EPIDEMIOLOGICAL PROFILE - December 31, 2007

### Section IV - Baltimore County HIV and AIDS Case Demographics

Incidence (Newly Diagnosed Cases) during 1/1/06-12/31/06 and Prevalence (Living Cases) on 12/31/06 as Reported through 12/31/07

| <u>GENDER</u> | <b>Incidence</b> |               |             |               | <b>Prevalence</b> |               |             |               |                       |               |
|---------------|------------------|---------------|-------------|---------------|-------------------|---------------|-------------|---------------|-----------------------|---------------|
|               | <u>HIV</u>       |               | <u>AIDS</u> |               | <u>HIV</u>        |               | <u>AIDS</u> |               | <u>Total HIV/AIDS</u> |               |
|               | No.              | %             | No.         | %             | No.               | %             | No.         | %             | No.                   | %             |
| Male          | 124              | 63.3%         | 71          | 62.3%         | 824               | 62.6%         | 714         | 67.0%         | 1538                  | 64.6%         |
| Female        | 72               | 36.7%         | 43          | 37.7%         | 493               | 37.4%         | 351         | 33.0%         | 844                   | 35.4%         |
| Missing*      | 2                |               |             |               | 5                 |               |             |               | 5                     |               |
| <b>TOTAL</b>  | <b>198</b>       | <b>100.0%</b> | <b>114</b>  | <b>100.0%</b> | <b>1322</b>       | <b>100.0%</b> | <b>1065</b> | <b>100.0%</b> | <b>2387</b>           | <b>100.0%</b> |

| <u>RACE/ETHNICITY</u> | <b>Incidence</b> |               |             |               | <b>Prevalence</b> |               |             |               |                       |               |
|-----------------------|------------------|---------------|-------------|---------------|-------------------|---------------|-------------|---------------|-----------------------|---------------|
|                       | <u>HIV</u>       |               | <u>AIDS</u> |               | <u>HIV</u>        |               | <u>AIDS</u> |               | <u>Total HIV/AIDS</u> |               |
|                       | No.              | %             | No.         | %             | No.               | %             | No.         | %             | No.                   | %             |
| White                 | 53               | 38.1%         | 35          | 30.7%         | 247               | 25.3%         | 350         | 32.9%         | 597                   | 10.1%         |
| African-American      | 84               | 60.4%         | 75          | 65.8%         | 695               | 71.3%         | 678         | 63.7%         | 1373                  | 67.3%         |
| Hispanic              | 1                | 0.7%          | 4           | 3.5%          | 15                | 1.5%          | 27          | 2.5%          | 42                    | 2.1%          |
| Other                 | 1                | 0.7%          | 0           | 0.0%          | 18                | 1.8%          | 10          | 0.9%          | 28                    | 1.4%          |
| Missing*              | 59               |               |             |               | 347               |               |             |               | 347                   |               |
| <b>TOTAL</b>          | <b>198</b>       | <b>100.0%</b> | <b>114</b>  | <b>100.0%</b> | <b>1322</b>       | <b>100.0%</b> | <b>1065</b> | <b>100.0%</b> | <b>2387</b>           | <b>100.0%</b> |

| <u>AGE**</u>     | <b>Incidence</b> |               |             |               | <b>Prevalence</b> |               |             |               |                       |               |
|------------------|------------------|---------------|-------------|---------------|-------------------|---------------|-------------|---------------|-----------------------|---------------|
|                  | <u>HIV</u>       |               | <u>AIDS</u> |               | <u>HIV</u>        |               | <u>AIDS</u> |               | <u>Total HIV/AIDS</u> |               |
|                  | No.              | %             | No.         | %             | No.               | %             | No.         | %             | No.                   | %             |
| <5 (Pediatric)   | 1                | 0.5%          | 0           | 0.0%          | 2                 | 0.2%          | 0           | 0.0%          | 2                     | 0.1%          |
| 5-12 (Pediatric) | 0                | 0.0%          | 0           | 0.0%          | 7                 | 0.5%          | 0           | 0.0%          | 7                     | 0.8%          |
| 13-19            | 8                | 4.0%          | 2           | 1.5%          | 23                | 1.7%          | 7           | 0.7%          | 30                    | 1.3%          |
| 20-29            | 44               | 22.2%         | 12          | 10.5%         | 156               | 11.8%         | 46          | 4.3%          | 202                   | 8.5%          |
| 30-39            | 48               | 24.2%         | 33          | 28.9%         | 306               | 23.1%         | 224         | 21.0%         | 530                   | 23.5%         |
| 40-49            | 62               | 31.3%         | 47          | 41.2%         | 463               | 35.0%         | 462         | 43.4%         | 925                   | 38.8%         |
| 50-59            | 26               | 13.1%         | 16          | 14.0%         | 275               | 20.8%         | 258         | 24.2%         | 533                   | 22.3%         |
| 60+              | 9                | 4.5%          | 4           | 3.5%          | 90                | 6.8%          | 68          | 6.4%          | 158                   | 6.6%          |
| <b>TOTAL</b>     | <b>198</b>       | <b>100.0%</b> | <b>114</b>  | <b>100.0%</b> | <b>1322</b>       | <b>100.0%</b> | <b>1065</b> | <b>100.0%</b> | <b>2387</b>           | <b>100.0%</b> |

Incident cases were cases newly diagnosed during the 12 month period.

Prevalent cases were alive on 12/31/06.

HIV case reporting began in 1994.

\* Cases with missing race or gender were excluded from percent distributions.

\*\* For incident cases, age was at time of diagnosis. For prevalent cases, age was as of 12/31/06.

# BALTIMORE COUNTY HIV/AIDS EPIDEMIOLOGICAL PROFILE

December 31, 2007

## Section V - Baltimore County HIV/AIDS Case Expanded Demographics

Total HIV/AIDS Prevalence (Living Cases) on 12/31/06 as Reported through 12/31/07

| GENDER/AGE            | RACE/ETHNICITY |                         |              |                               |             | <u>Total</u>  | % |
|-----------------------|----------------|-------------------------|--------------|-------------------------------|-------------|---------------|---|
|                       | <u>White</u>   | <u>African-American</u> | <u>Other</u> | <u>Missing Race/Ethnicity</u> |             |               |   |
|                       | No.            | No.                     | No.          | No.                           | No.         |               |   |
| <u>Male</u>           |                |                         |              |                               |             |               |   |
| <5 (Pediatric)        | 0              | 0                       | 0            | 1                             | 1           | 0.1%          |   |
| 5-12 (Pediatric)      | 0              | 3                       | 0            | 2                             | 5           | 0.6%          |   |
| 13-19                 | 0              | 10                      | 0            | 6                             | 16          | 1.0%          |   |
| 20-29                 | 26             | 80                      | 1            | 15                            | 122         | 7.9%          |   |
| 30-39                 | 69             | 160                     | 13           | 47                            | 289         | 18.8%         |   |
| 40-49                 | 189            | 344                     | 16           | 64                            | 613         | 39.9%         |   |
| 50-59                 | 113            | 196                     | 22           | 46                            | 377         | 24.5%         |   |
| 60+                   | 35             | 54                      | 1            | 25                            | 115         | 6.1%          |   |
| <b>SUBTOTAL</b>       | <b>432</b>     | <b>847</b>              | <b>53</b>    | <b>206</b>                    | <b>1538</b> | <b>100.0%</b> |   |
| <u>Female</u>         |                |                         |              |                               |             |               |   |
| <5 (Pediatric)        | 0              | 1                       | 0            | 0                             | 1           | 0.1%          |   |
| 5-12 (Pediatric)      | 0              | 0                       | 0            | 2                             | 2           | 1.2%          |   |
| 13-19                 | 4              | 7                       | 0            | 2                             | 13          | 1.5%          |   |
| 20-29                 | 12             | 49                      | 4            | 14                            | 79          | 9.4%          |   |
| 30-39                 | 63             | 127                     | 7            | 44                            | 241         | 28.6%         |   |
| 40-49                 | 52             | 207                     | 4            | 46                            | 309         | 36.6%         |   |
| 50-59                 | 25             | 108                     | 2            | 21                            | 156         | 18.5%         |   |
| 60+                   | 9              | 26                      | 0            | 8                             | 43          | 5.1%          |   |
| <b>SUBTOTAL</b>       | <b>165</b>     | <b>525</b>              | <b>17</b>    | <b>137</b>                    | <b>844</b>  | <b>100.0%</b> |   |
| <u>Missing Gender</u> | 0              | 1                       | 0            | 4                             | 5           |               |   |
| <b>TOTAL</b>          | <b>597</b>     | <b>1373</b>             | <b>70</b>    | <b>347</b>                    | <b>2387</b> |               |   |

Prevalent cases were alive on 12/31/06.

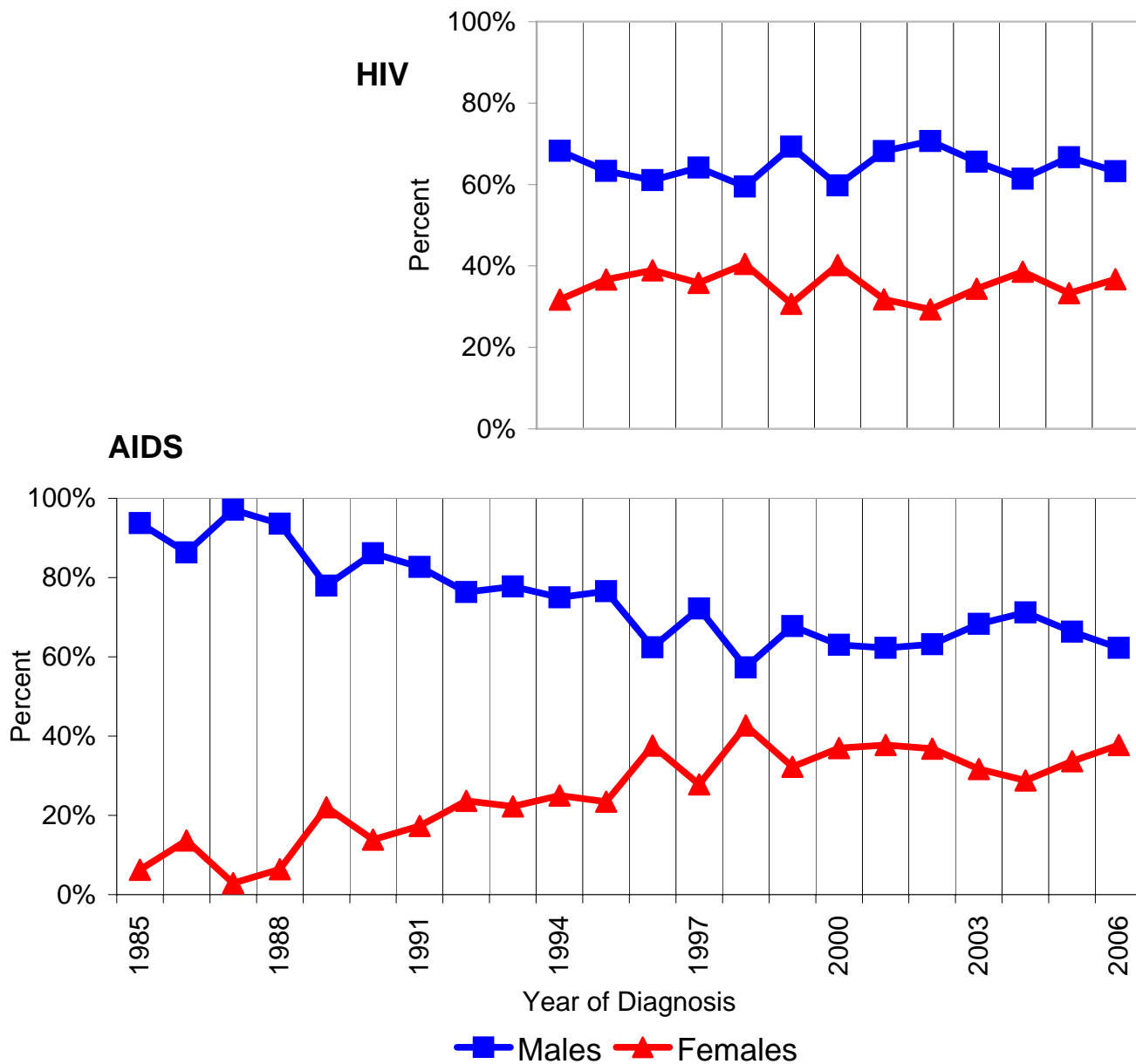
HIV case reporting began in 1994.

Age was as of 12/31/06.

**BALTIMORE COUNTY HIV/AIDS EPIDEMIOLOGICAL PROFILE**  
**December 31, 2007**

**Section VI - Baltimore County HIV and AIDS Case Gender Trends**

**Proportions by Gender of Incident (Newly Diagnosed) Cases during each Calendar Year as Reported through 12/31/07**



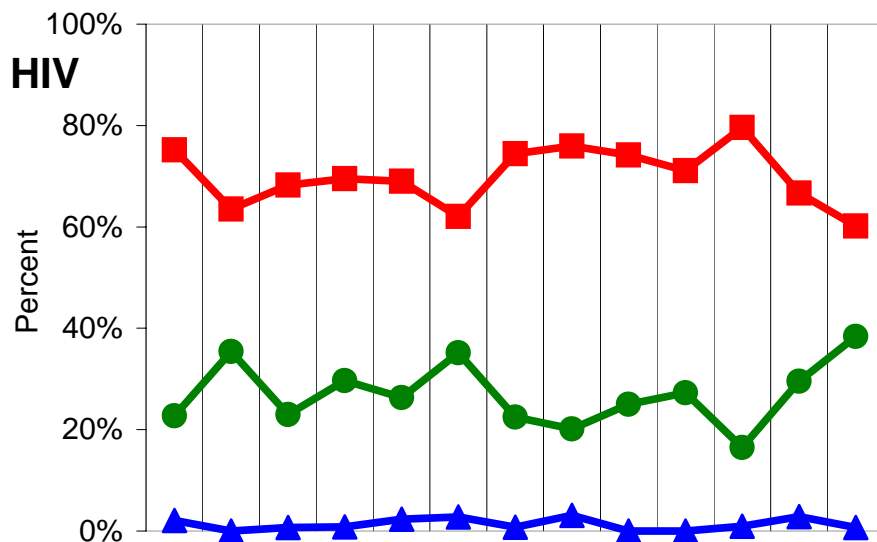
Percent distributions excluded cases with missing gender.  
 HIV case reporting began in 1994.

# BALTIMORE COUNTY HIV/AIDS EPIDEMIOLOGICAL PROFILE

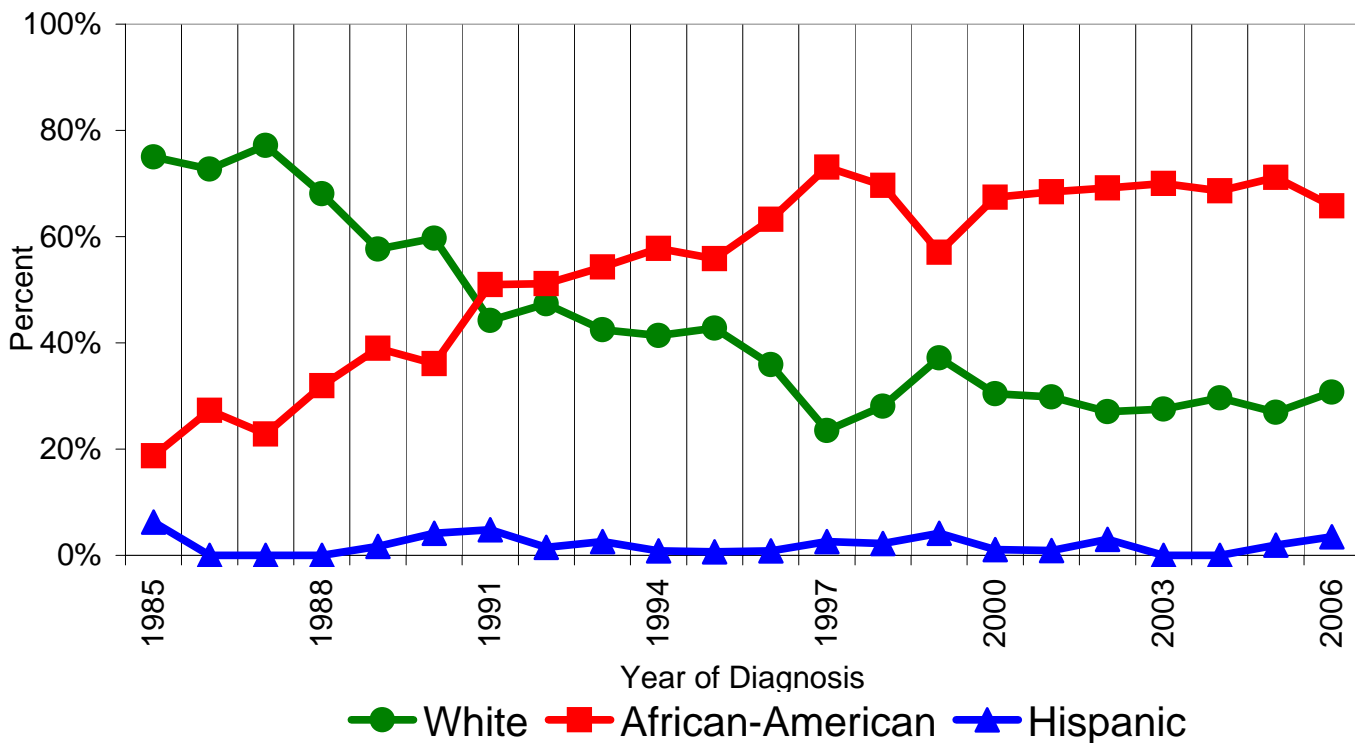
## December 31, 2007

### Section VII - Baltimore County HIV and AIDS Case Race/Ethnicity Trends

Proportions by Race/Ethnicity of Incident (Newly Diagnosed) Cases during each Calendar Year as Reported through 12/31/07



**AIDS**



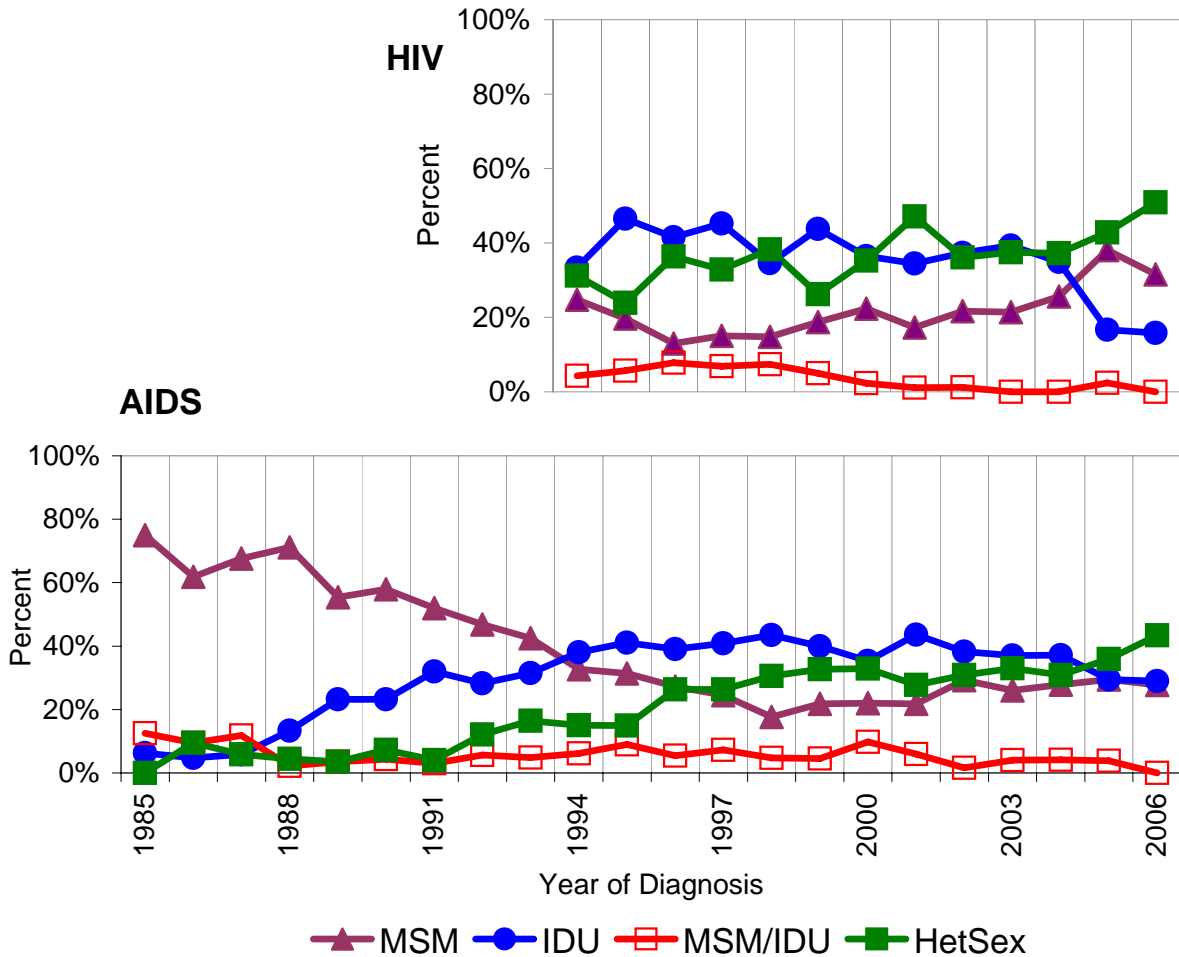
Percent distributions excluded cases with missing race/ethnicity.  
 HIV case reporting began in 1994.

# BALTIMORE COUNTY HIV/AIDS EPIDEMIOLOGICAL PROFILE

December 31, 2007

## Section VIII - Baltimore County AIDS Case Exposure Category Trends

Proportions by Exposure Category of Incident (Newly Diagnosed) AIDS Cases during each Calendar Year as Reported through 12/31/07



Other exposure categories (not shown) that accounted for small percentages of cases included hemophiliacs, transfusion recipients, pediatric transmissions and occupational exposures.

Percent distributions excluded cases with exposure category under investigation and risk not specified.

Baltimore County data currently have exposure on 44% of HIV cases and 91% of AIDS cases.

HIV case reporting began in 1994.

- MSM = Men who have sex with men
- IDU = Injection drug users
- MSM/IDU = Men who have sex with men and are injection drug users
- HetSex = Heterosexual contact



**BALTIMORE COUNTY HIV/AIDS EPIDEMIOLOGICAL PROFILE - December 31, 2007**

**Section IX - Baltimore County HIV and AIDS Case Reports by ZIP Code**

**Cumulative Events Reported through 12/31/07**

| ZIP CODE                | HIV Cases              |        |               |        | AIDS Cases |            | AIDS Deaths |            |
|-------------------------|------------------------|--------|---------------|--------|------------|------------|-------------|------------|
|                         | by Code                |        | by Name       |        | Cumulative | Cumulative | Cumulative  | Cumulative |
|                         | Non-AIDS<br>Cumulative |        | Since 4/24/07 |        |            |            |             |            |
| No.                     | %                      | No.    | %             | No.    | %          | No.        | %           |            |
| 21013                   | 2                      | 0.2%   | 0             | 0.0%   | 2          | 0.1%       | 2           | 0.2%       |
| 21030                   | 18                     | 1.4%   | 2             | 1.0%   | 48         | 2.2%       | 21          | 1.9%       |
| 21031                   | 0                      | 0.0%   | 0             | 0.0%   | 0          | 0.0%       | 0           | 0.0%       |
| 21043                   | 0                      | 0.0%   | 0             | 0.0%   | 0          | 0.0%       | 0           | 0.0%       |
| 21051                   | 0                      | 0.0%   | 0             | 0.0%   | 1          | 0.0%       | 0           | 0.0%       |
| 21052                   | 9                      | 0.7%   | 0             | 0.0%   | 2          | 0.1%       | 2           | 0.2%       |
| 21053                   | 1                      | 0.1%   | 1             | 0.5%   | 3          | 0.1%       | 0           | 0.0%       |
| 21057                   | 1                      | 0.1%   | 0             | 0.0%   | 4          | 0.2%       | 4           | 0.4%       |
| 21071                   | 0                      | 0.0%   | 0             | 0.0%   | 1          | 0.0%       | 1           | 0.1%       |
| 21074                   | 0                      | 0.0%   | 0             | 0.0%   | 0          | 0.0%       | 0           | 0.0%       |
| 21082                   | 0                      | 0.0%   | 0             | 0.0%   | 1          | 0.0%       | 0           | 0.0%       |
| 21085                   | 0                      | 0.0%   | 0             | 0.0%   | 0          | 0.0%       | 0           | 0.0%       |
| 21087                   | 1                      | 0.1%   | 0             | 0.0%   | 7          | 0.3%       | 5           | 0.5%       |
| 21093                   | 5                      | 0.4%   | 1             | 0.5%   | 46         | 2.1%       | 30          | 2.7%       |
| 21102                   | 0                      | 0.0%   | 0             | 0.0%   | 0          | 0.0%       | 0           | 0.0%       |
| 21104                   | 0                      | 0.0%   | 0             | 0.0%   | 0          | 0.0%       | 0           | 0.0%       |
| 21105                   | 0                      | 0.0%   | 0             | 0.0%   | 1          | 0.0%       | 1           | 0.1%       |
| 21111                   | 3                      | 0.2%   | 0             | 0.0%   | 4          | 0.2%       | 3           | 0.3%       |
| 21117                   | 70                     | 5.3%   | 7             | 3.6%   | 107        | 4.9%       | 48          | 4.4%       |
| 21120                   | 0                      | 0.0%   | 0             | 0.0%   | 5          | 0.2%       | 4           | 0.4%       |
| 21128                   | 3                      | 0.2%   | 0             | 0.0%   | 4          | 0.2%       | 2           | 0.2%       |
| 21131                   | 4                      | 0.3%   | 2             | 1.0%   | 7          | 0.3%       | 3           | 0.3%       |
| 21133                   | 83                     | 6.3%   | 13            | 6.7%   | 187        | 8.6%       | 91          | 8.3%       |
| 21136                   | 30                     | 2.3%   | 6             | 3.1%   | 52         | 2.4%       | 31          | 2.8%       |
| 21152                   | 1                      | 0.1%   | 1             | 0.5%   | 7          | 0.3%       | 3           | 0.3%       |
| 21155                   | 1                      | 0.1%   | 0             | 0.0%   | 4          | 0.2%       | 4           | 0.4%       |
| 21156                   | 2                      | 0.2%   | 0             | 0.0%   | 0          | 0.0%       | 0           | 0.0%       |
| 21161                   | 0                      | 0.0%   | 0             | 0.0%   | 2          | 0.1%       | 2           | 0.2%       |
| 21162                   | 1                      | 0.1%   | 1             | 0.5%   | 3          | 0.1%       | 2           | 0.2%       |
| 21163                   | 1                      | 0.1%   | 0             | 0.0%   | 1          | 0.0%       | 0           | 0.0%       |
| 21204                   | 55                     | 4.1%   | 2             | 1.0%   | 54         | 2.5%       | 36          | 3.3%       |
| 21206                   | 14                     | 1.1%   | 0             | 0.0%   | 18         | 0.8%       | 11          | 1.0%       |
| 21207                   | 154                    | 11.6%  | 14            | 7.3%   | 286        | 13.1%      | 171         | 15.7%      |
| 21208                   | 67                     | 5.0%   | 15            | 7.8%   | 107        | 4.9%       | 42          | 3.8%       |
| 21209                   | 16                     | 1.2%   | 0             | 0.0%   | 21         | 1.0%       | 12          | 1.1%       |
| 21210                   | 0                      | 0.0%   | 0             | 0.0%   | 0          | 0.0%       | 0           | 0.0%       |
| 21212                   | 3                      | 0.2%   | 0             | 0.0%   | 5          | 0.2%       | 3           | 0.3%       |
| 21215                   | 1                      | 0.1%   | 0             | 0.0%   | 2          | 0.1%       | 2           | 0.2%       |
| 21219                   | 14                     | 1.1%   | 2             | 1.0%   | 27         | 1.2%       | 13          | 1.2%       |
| 21220                   | 55                     | 4.1%   | 13            | 6.7%   | 91         | 4.2%       | 45          | 4.1%       |
| 21221                   | 115                    | 8.7%   | 14            | 7.3%   | 181        | 8.3%       | 92          | 8.4%       |
| 21222                   | 119                    | 9.0%   | 20            | 10.4%  | 198        | 9.1%       | 101         | 9.3%       |
| 21224                   | 12                     | 0.9%   | 0             | 0.0%   | 13         | 0.6%       | 5           | 0.5%       |
| 21227                   | 56                     | 4.2%   | 11            | 5.7%   | 98         | 4.5%       | 46          | 4.2%       |
| 21228                   | 61                     | 4.6%   | 11            | 5.7%   | 138        | 6.3%       | 70          | 6.4%       |
| 21229                   | 9                      | 0.7%   | 0             | 0.0%   | 15         | 0.7%       | 7           | 0.6%       |
| 21234                   | 93                     | 7.0%   | 19            | 9.8%   | 140        | 6.4%       | 60          | 5.5%       |
| 21236                   | 28                     | 2.1%   | 5             | 2.6%   | 45         | 2.1%       | 22          | 2.0%       |
| 21237                   | 54                     | 4.1%   | 13            | 6.7%   | 77         | 3.5%       | 37          | 3.4%       |
| 21239                   | 3                      | 0.2%   | 0             | 0.0%   | 6          | 0.3%       | 5           | 0.5%       |
| 21244                   | 146                    | 11.0%  | 18            | 9.3%   | 141        | 6.5%       | 46          | 4.2%       |
| 21286                   | 17                     | 1.3%   | 2             | 1.0%   | 19         | 0.9%       | 6           | 0.5%       |
| Missing ZIP*            | 129                    |        | 0             |        | 17         |            | 5           |            |
| <i>Baltimore County</i> | 1457                   | 100.0% | 193           | 100.0% | 2198       | 100.0%     | 1096        | 100.0%     |

Laboratory reporting of HIV cases by code existed from June 1, 1994 to April 24, 2007.  
 Provider and laboratory reporting of HIV cases by name has existed since April 24, 2007.

Maryland is re-reporting code HIV cases by name, therefore, the same person may appear as a code HIV case and as a name HIV case.

HIV cases reported by name since 4/24/07 may also have been reported as AIDS cases.  
 Non-AIDS cumulative HIV cases included all HIV cases reported through the end of the period, that had not been reported as AIDS cases by the end of the period.  
 AIDS deaths included all causes of death.

The median time from diagnosis to report was one month for cumulative non-AIDS HIV code cases, 13 months for HIV name cases, and four months for cumulative AIDS cases.