

BALTIMORE CITY HIV/AIDS EPIDEMIOLOGICAL PROFILE

Second Quarter 2008 - Data reported through June 30, 2008

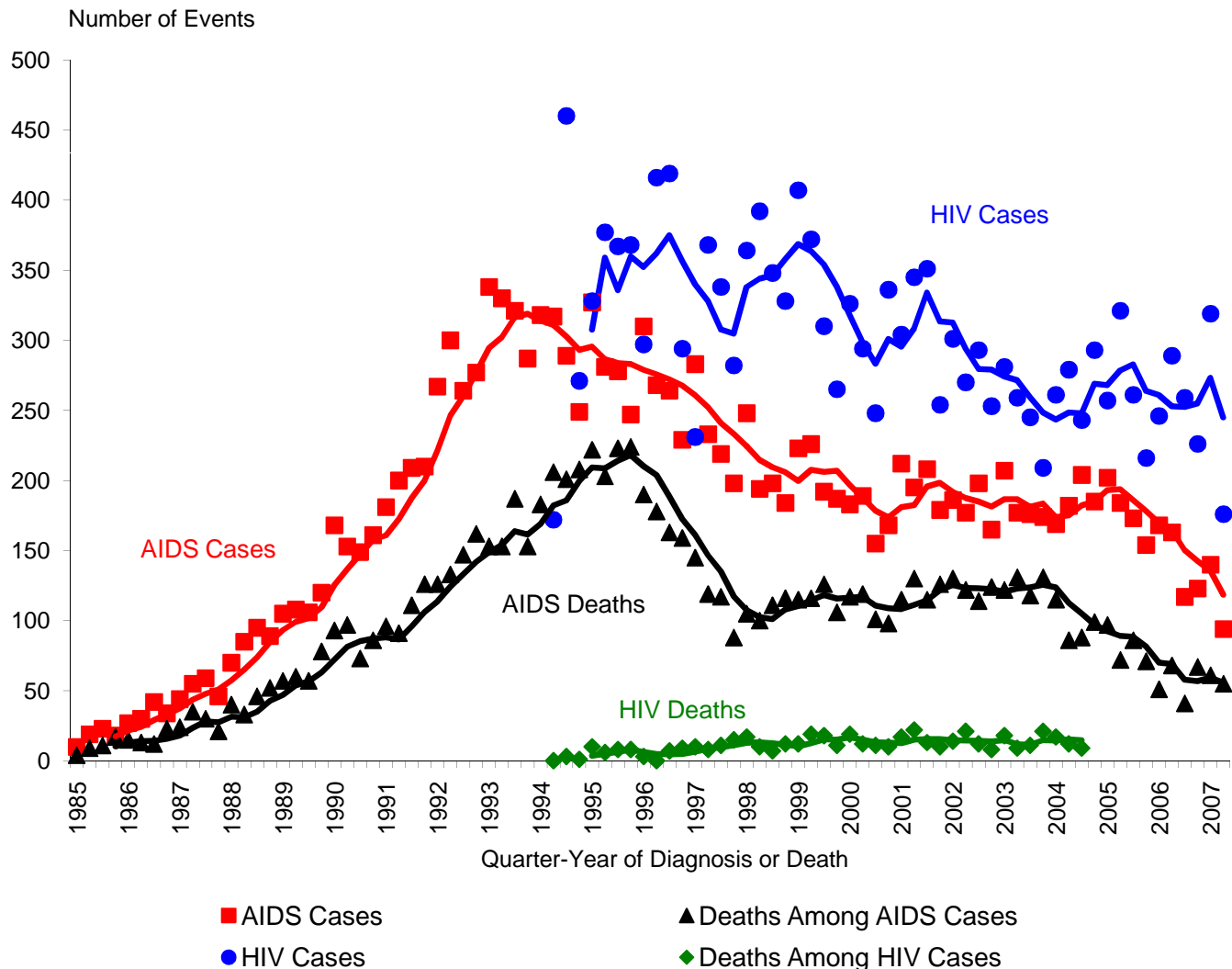
AIDS Administration
 Maryland Department of Health and Mental Hygiene
www.dhmh.state.md.us/AIDS/
 1-800-358-9001

SPECIAL NOTE ON HIV REPORTING

The Maryland HIV/AIDS Reporting Act of 2007 became law on April 24, 2007. The law expanded HIV/AIDS reporting and required that HIV cases be reported by name. The reporting period presented in this report includes the first full year of the new reporting, however, most of the tables and figures are as of the end of code-reporting and are unaffected by this change. Section X has been modified to include the changes and future reports will have additional modifications. For additional information on HIV reporting please visit the AIDS Administration web site at the above address.

Section I - Baltimore City HIV and AIDS Case Trends

Incident (Newly Diagnosed) HIV and AIDS Cases and Deaths among HIV and AIDS Cases by Quarter-Year through Second Quarter 2007 as Reported through 6/30/08



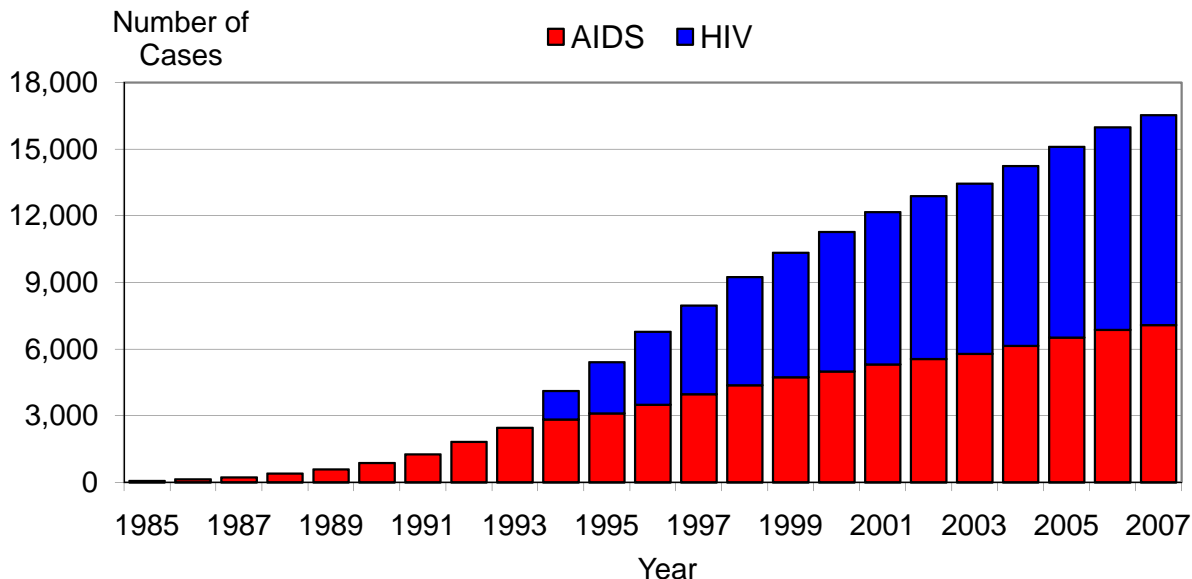
HIV case reporting began in June of 1994.

Trend lines are weighted moving averages (over 4 quarters).

BALTIMORE CITY HIV/AIDS EPIDEMIOLOGICAL PROFILE - June 30, 2008

Section II - Baltimore City HIV and AIDS Case Prevalence Trends

Prevalent (Living) HIV and AIDS Cases on December 31st of Each Year as Reported through 6/30/08



| YEAR | HIV | AIDS | Total HIV/AIDS |
|------|-------|-------|----------------|
| 1985 | | 58 | 58 |
| 1986 | | 130 | 130 |
| 1987 | | 225 | 225 |
| 1988 | | 396 | 396 |
| 1989 | | 586 | 586 |
| 1990 | | 877 | 877 |
| 1991 | | 1,265 | 1,265 |
| 1992 | | 1,817 | 1,817 |
| 1993 | | 2,454 | 2,454 |
| 1994 | 1,276 | 2,837 | 4,113 |
| 1995 | 2,297 | 3,108 | 5,405 |
| 1996 | 3,277 | 3,495 | 6,772 |
| 1997 | 3,997 | 3,969 | 7,966 |
| 1998 | 4,879 | 4,366 | 9,245 |
| 1999 | 5,601 | 4,734 | 10,335 |
| 2000 | 6,277 | 4,999 | 11,276 |
| 2001 | 6,856 | 5,314 | 12,170 |
| 2002 | 7,338 | 5,552 | 12,890 |
| 2003 | 7,671 | 5,786 | 13,457 |
| 2004 | 8,097 | 6,139 | 14,236 |
| 2005 | 8,587 | 6,526 | 15,113 |
| 2006 | 9,118 | 6,870 | 15,988 |
| 2007 | 9,447 | 7,085 | 16,532 |

Prevalent cases are alive on December 31st of the given year.
June 30th for HIV in 2007

BALTIMORE CITY HIV/AIDS EPIDEMIOLOGICAL PROFILE - June 30, 2008

Section III - Baltimore City HIV and AIDS Case Geography

Incidence (Newly Diagnosed Cases) during 7/1/06-6/30/07 and Prevalence (Living Cases) on 6/30/07 as Reported through 6/30/08

| ZIP CODE | Incidence | | | | Prevalence | | | | Total HIV/AIDS | |
|-----------------------|-----------|--------|------|--------|------------|--------|------|--------|----------------|--------|
| | HIV | | AIDS | | HIV | | AIDS | | No. | % |
| | No. | % | No. | % | No. | % | No. | % | No. | % |
| 21201 | 45 | 5.3% | 25 | 5.3% | 578 | 6.7% | 343 | 5.0% | 921 | 5.9% |
| 21202 | 52 | 6.1% | 23 | 4.9% | 694 | 8.1% | 538 | 7.8% | 1232 | 7.9% |
| 21205 | 32 | 3.7% | 14 | 3.0% | 321 | 3.7% | 300 | 4.3% | 621 | 4.0% |
| 21206 | 35 | 4.1% | 28 | 5.9% | 281 | 3.3% | 264 | 3.8% | 545 | 3.5% |
| 21207 | 23 | 2.7% | 12 | 2.5% | 189 | 2.2% | 179 | 2.6% | 368 | 2.4% |
| 21208 | 1 | 0.1% | 0 | 0.0% | 5 | 0.1% | 4 | 0.1% | 9 | 0.1% |
| 21209 | 7 | 0.8% | 3 | 0.6% | 32 | 0.4% | 25 | 0.4% | 57 | 0.2% |
| 21210 | 0 | 0.0% | 2 | 0.4% | 18 | 0.2% | 11 | 0.2% | 29 | 0.2% |
| 21211 | 16 | 1.9% | 3 | 0.6% | 88 | 1.0% | 78 | 1.1% | 166 | 1.1% |
| 21212 | 11 | 1.3% | 11 | 2.3% | 186 | 2.2% | 163 | 2.4% | 349 | 2.3% |
| 21213 | 72 | 8.4% | 32 | 6.8% | 691 | 8.0% | 548 | 7.9% | 1239 | 8.0% |
| 21214 | 12 | 1.4% | 7 | 1.5% | 80 | 0.9% | 81 | 1.2% | 161 | 1.0% |
| 21215 | 79 | 9.3% | 52 | 11.0% | 860 | 10.0% | 666 | 9.6% | 1526 | 9.8% |
| 21216 | 47 | 5.5% | 30 | 6.4% | 471 | 5.5% | 450 | 6.5% | 921 | 5.9% |
| 21217 | 98 | 11.5% | 64 | 13.6% | 1095 | 12.7% | 829 | 12.0% | 1924 | 12.4% |
| 21218 | 91 | 10.7% | 37 | 7.9% | 789 | 9.2% | 648 | 9.4% | 1437 | 9.3% |
| 21222 | 1 | 0.1% | 0 | 0.0% | 5 | 0.1% | 1 | 0.0% | 6 | 0.0% |
| 21223 | 63 | 7.4% | 35 | 7.4% | 627 | 7.3% | 499 | 7.2% | 1126 | 7.3% |
| 21224 | 21 | 2.5% | 17 | 3.6% | 317 | 3.7% | 218 | 3.0% | 535 | 3.5% |
| 21225 | 20 | 2.3% | 13 | 2.5% | 175 | 2.0% | 150 | 2.2% | 325 | 2.1% |
| 21226 | 4 | 0.5% | 1 | 0.2% | 22 | 0.3% | 14 | 0.2% | 36 | 0.2% |
| 21227 | 2 | 0.2% | 0 | 0.0% | 24 | 0.3% | 1 | 0.0% | 25 | 0.2% |
| 21228 | 0 | 0.0% | 0 | 0.0% | 1 | 0.0% | 1 | 0.0% | 2 | 0.0% |
| 21229 | 43 | 5.0% | 26 | 5.5% | 384 | 4.5% | 342 | 5.0% | 726 | 4.7% |
| 21230 | 23 | 2.7% | 15 | 3.2% | 226 | 2.6% | 177 | 2.6% | 403 | 2.5% |
| 21231 | 14 | 1.6% | 8 | 1.7% | 225 | 2.6% | 185 | 2.7% | 410 | 2.6% |
| 21234 | 6 | 0.7% | 0 | 0.0% | 36 | 0.4% | 28 | 0.4% | 64 | 0.4% |
| 21236 | 0 | 0.0% | 0 | 0.0% | 0 | 0.0% | 0 | 0.0% | 0 | 0.0% |
| 21237 | 7 | 0.8% | 0 | 0.0% | 34 | 0.4% | 14 | 0.2% | 48 | 0.3% |
| 21239 | 29 | 3.4% | 13 | 2.8% | 138 | 1.6% | 151 | 2.2% | 289 | 1.9% |
| Missing ZIP* | 125 | | 4 | | 855 | | 81 | | 936 | |
| <i>Baltimore City</i> | 979 | 100.0% | 475 | 100.0% | 9447 | 100.0% | 6989 | 100.0% | 16436 | 100.0% |

HIV case reporting began in 1994.

For code-based HIV cases reported 7/1/06 through 6/30/07, the median time from diagnosis to report was one month. For AIDS cases reported 7/1/07 through 6/30/08, the median time from diagnosis to report was three months.

* Cases with missing ZIP were excluded from percent distributions.

BALTIMORE CITY HIV/AIDS EPIDEMIOLOGICAL PROFILE - June 30, 2008

Section IV - Baltimore City HIV and AIDS Case Demographics

Incidence (Newly Diagnosed Cases) during 7/1/06-6/30/07 and Prevalence (Living Cases) on 6/30/07 as Reported through 6/30/08

| <u>GENDER</u> | Incidence | | | | Prevalence | | | | | |
|---------------|------------------|---------------|-------------|---------------|-------------------|---------------|-------------|---------------|-----------------------|---------------|
| | <u>HIV</u> | | <u>AIDS</u> | | <u>HIV</u> | | <u>AIDS</u> | | <u>Total HIV/AIDS</u> | |
| | No. | % | No. | % | No. | % | No. | % | No. | % |
| Male | 628 | 64.3% | 284 | 59.8% | 5754 | 61.1% | 4477 | 64.1% | 10231 | 62.4% |
| Female | 348 | 35.7% | 191 | 40.2% | 3662 | 38.9% | 2512 | 35.9% | 6174 | 37.6% |
| Missing* | 3 | | | | 31 | | | | 31 | |
| TOTAL | 979 | 100.0% | 475 | 100.0% | 9447 | 100.0% | 6989 | 100.0% | 16436 | 100.0% |

| <u>RACE/ETHNICITY</u> | Incidence | | | | Prevalence | | | | | |
|-----------------------|------------------|---------------|-------------|---------------|-------------------|---------------|-------------|---------------|-----------------------|---------------|
| | <u>HIV</u> | | <u>AIDS</u> | | <u>HIV</u> | | <u>AIDS</u> | | <u>Total HIV/AIDS</u> | |
| | No. | % | No. | % | No. | % | No. | % | No. | % |
| White | 91 | 11.9% | 43 | 9.1% | 817 | 10.2% | 702 | 10.0% | 1519 | 10.1% |
| African-American | 667 | 87.1% | 421 | 88.6% | 7047 | 88.4% | 6190 | 88.6% | 13237 | 88.5% |
| Hispanic | 1 | 0.1% | 11 | 2.3% | 36 | 0.5% | 80 | 1.1% | 116 | 0.8% |
| Other | 7 | 0.9% | 0 | 0.0% | 71 | 0.9% | 17 | 0.2% | 88 | 0.6% |
| Missing* | 213 | | | | 1476 | | | | 1476 | |
| TOTAL | 979 | 100.0% | 475 | 100.0% | 9447 | 100.0% | 6989 | 100.0% | 16436 | 100.0% |

| <u>AGE**</u> | Incidence | | | | Prevalence | | | | | |
|------------------|------------------|---------------|-------------|---------------|-------------------|---------------|-------------|---------------|-----------------------|---------------|
| | <u>HIV</u> | | <u>AIDS</u> | | <u>HIV</u> | | <u>AIDS</u> | | <u>Total HIV/AIDS</u> | |
| | No. | % | No. | % | No. | % | No. | % | No. | % |
| <5 (Pediatric) | 2 | 0.2% | 0 | 0.0% | 14 | 0.1% | 0 | 0.0% | 14 | 0.1% |
| 5-12 (Pediatric) | 3 | 0.3% | 0 | 0.0% | 69 | 0.7% | 14 | 0.2% | 83 | 0.8% |
| 13-19 | 37 | 3.8% | 13 | 1.5% | 92 | 1.0% | 75 | 1.1% | 167 | 1.0% |
| 20-29 | 174 | 17.8% | 46 | 9.7% | 821 | 8.7% | 300 | 4.3% | 1121 | 6.8% |
| 30-39 | 200 | 20.4% | 101 | 21.3% | 1671 | 17.7% | 1034 | 14.8% | 2705 | 23.5% |
| 40-49 | 335 | 34.2% | 183 | 38.5% | 3716 | 39.3% | 2936 | 42.0% | 6652 | 40.5% |
| 50-59 | 183 | 18.7% | 98 | 20.6% | 2381 | 25.2% | 2079 | 29.7% | 4460 | 27.1% |
| 60+ | 45 | 4.6% | 34 | 7.2% | 683 | 7.2% | 551 | 7.9% | 1234 | 7.5% |
| TOTAL | 979 | 100.0% | 475 | 100.0% | 9447 | 100.0% | 6989 | 100.0% | 16436 | 100.0% |

HIV case reporting began in 1994.

* Cases with missing race or gender were excluded from percent distributions.

** For incident cases, age was at time of diagnosis. For prevalent cases, age was as of 6/30/07.

BALTIMORE CITY HIV/AIDS EPIDEMIOLOGICAL PROFILE - June 30, 2008

Section V - Baltimore City HIV/AIDS Case Expanded Demographics

Total HIV/AIDS Prevalence (Living Cases) on 6/30/07 as Reported through 6/30/08

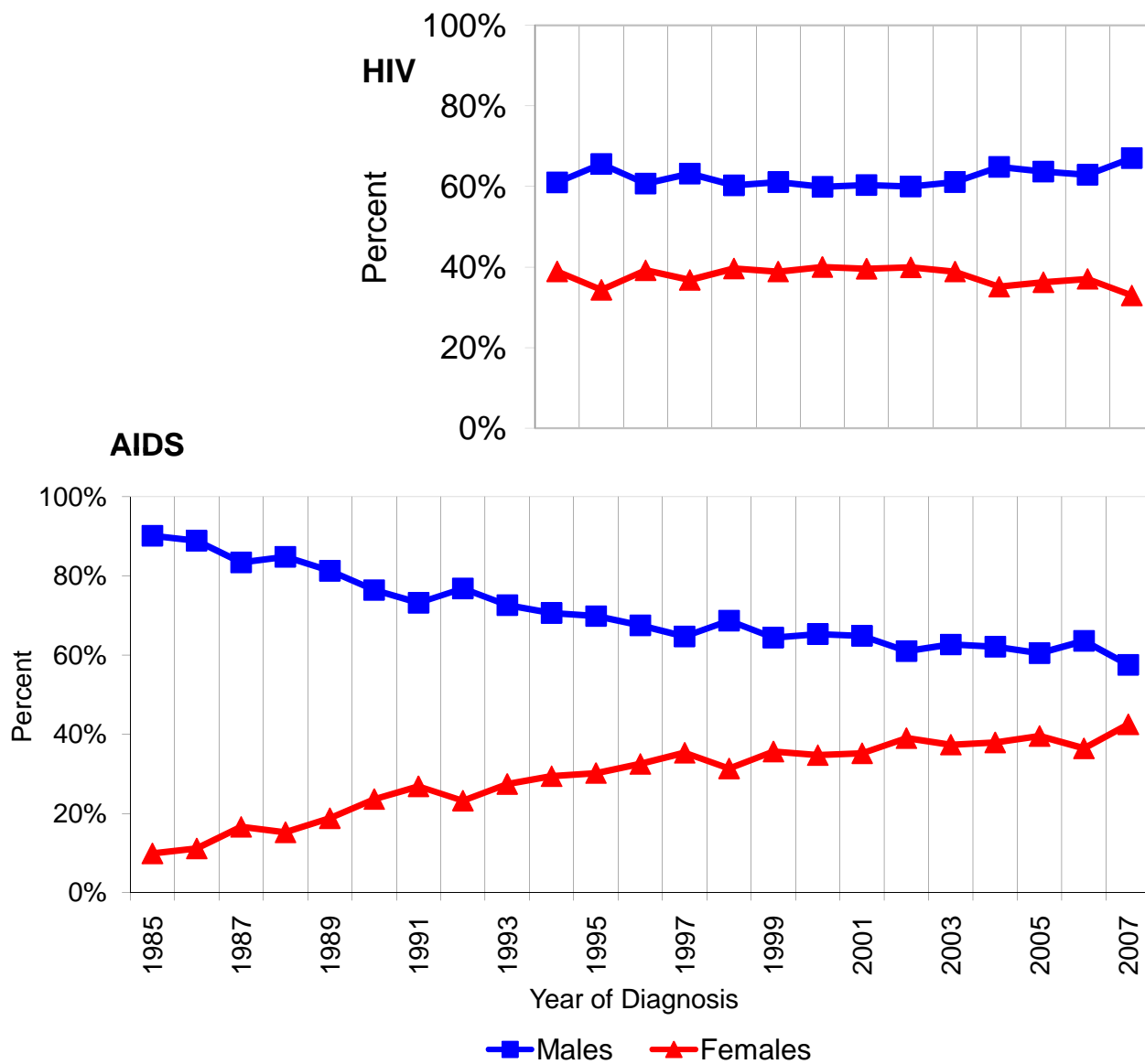
| GENDER/AGE | RACE/ETHNICITY | | | | | Total | % |
|-----------------------|----------------|-------------------------|--------------|-------------------------------|--------------|---------------|---|
| | <u>White</u> | <u>African-American</u> | <u>Other</u> | <u>Missing Race/Ethnicity</u> | | | |
| | No. | No. | No. | No. | No. | | |
| <u>Male</u> | | | | | | | |
| <5 (Pediatric) | 0 | 5 | 0 | 3 | 8 | 0.1% | |
| 5-12 (Pediatric) | 4 | 38 | 1 | 8 | 51 | 0.6% | |
| 13-19 | 2 | 73 | 0 | 7 | 82 | 0.8% | |
| 20-29 | 35 | 551 | 17 | 59 | 662 | 6.5% | |
| 30-39 | 198 | 956 | 26 | 104 | 1284 | 12.6% | |
| 40-49 | 450 | 3255 | 60 | 306 | 4071 | 39.8% | |
| 50-59 | 280 | 2612 | 26 | 238 | 3156 | 30.8% | |
| 60+ | 102 | 699 | 17 | 99 | 917 | 6.1% | |
| SUBTOTAL | 1071 | 8189 | 147 | 824 | 10231 | 100.0% | |
| <u>Female</u> | | | | | | | |
| <5 (Pediatric) | 0 | 2 | 0 | 3 | 5 | 0.1% | |
| 5-12 (Pediatric) | 0 | 30 | 0 | 2 | 32 | 1.2% | |
| 13-19 | 0 | 75 | 0 | 9 | 84 | 1.4% | |
| 20-29 | 43 | 344 | 4 | 67 | 458 | 7.4% | |
| 30-39 | 149 | 1073 | 15 | 182 | 1419 | 23.0% | |
| 40-49 | 177 | 2173 | 24 | 194 | 2568 | 41.6% | |
| 50-59 | 60 | 1091 | 11 | 132 | 1294 | 21.0% | |
| 60+ | 17 | 251 | 1 | 45 | 314 | 5.1% | |
| SUBTOTAL | 446 | 5039 | 55 | 634 | 6174 | 100.0% | |
| <u>Missing Gender</u> | 2 | 9 | 2 | 18 | 31 | | |
| TOTAL | 1519 | 13237 | 204 | 1476 | 16436 | | |

HIV case reporting began in 1994.
Age was as of 6/30/07.

BALTIMORE CITY HIV/AIDS EPIDEMIOLOGICAL PROFILE - June 30, 2008

Section VI - Baltimore City HIV and AIDS Case Gender Trends

Proportions by Gender of Incident (Newly Diagnosed) Cases during each Calendar Year as Reported through 6/30/08

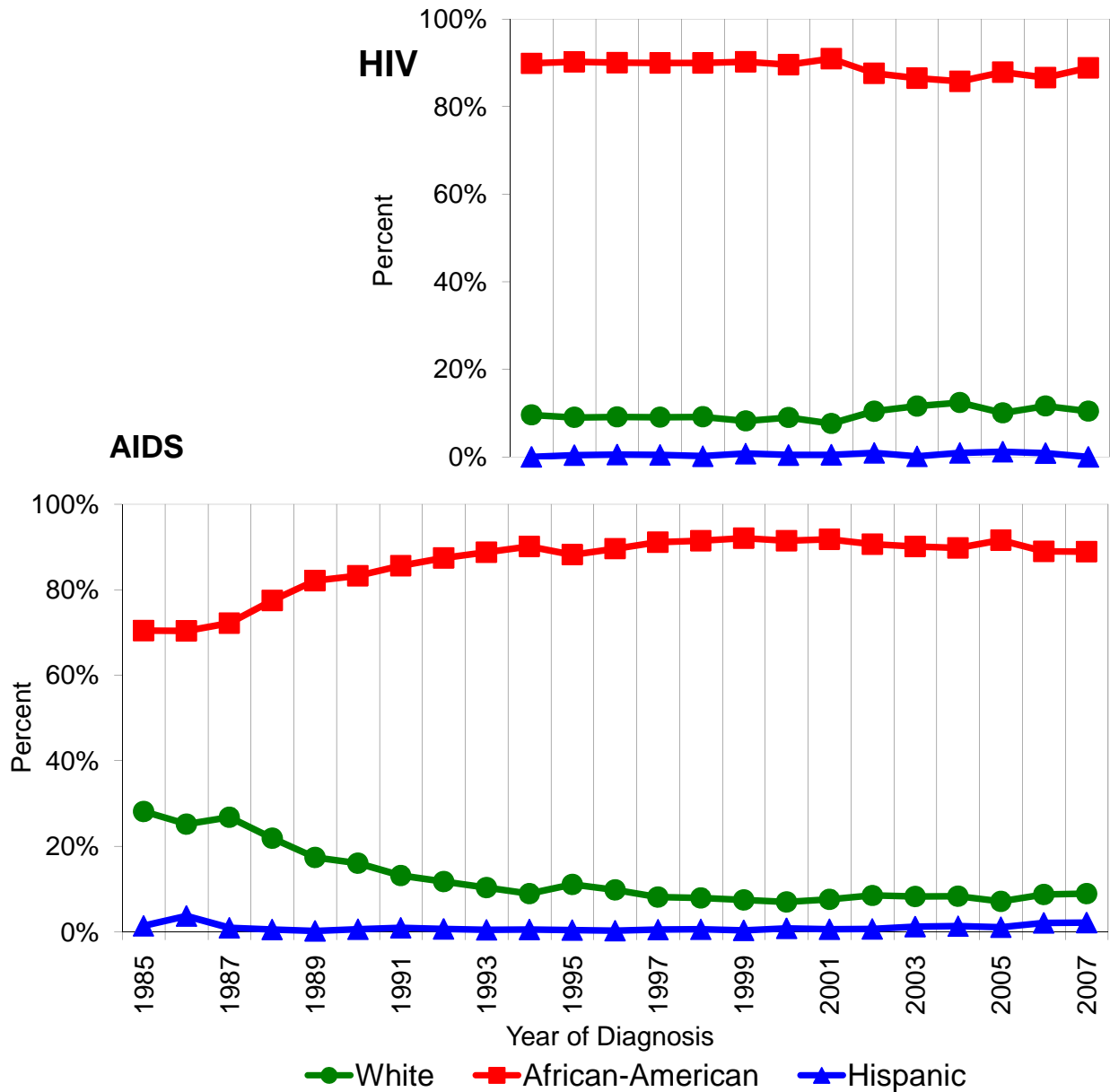


HIV case reporting began in 1994.

BALTIMORE CITY HIV/AIDS EPIDEMIOLOGICAL PROFILE - June 30, 2008

Section VII - Baltimore City HIV and AIDS Case Race/Ethnicity Trends

Proportions by Race/Ethnicity of Incident (Newly Diagnosed) Cases during each Calendar Year as Reported through 6/30/08

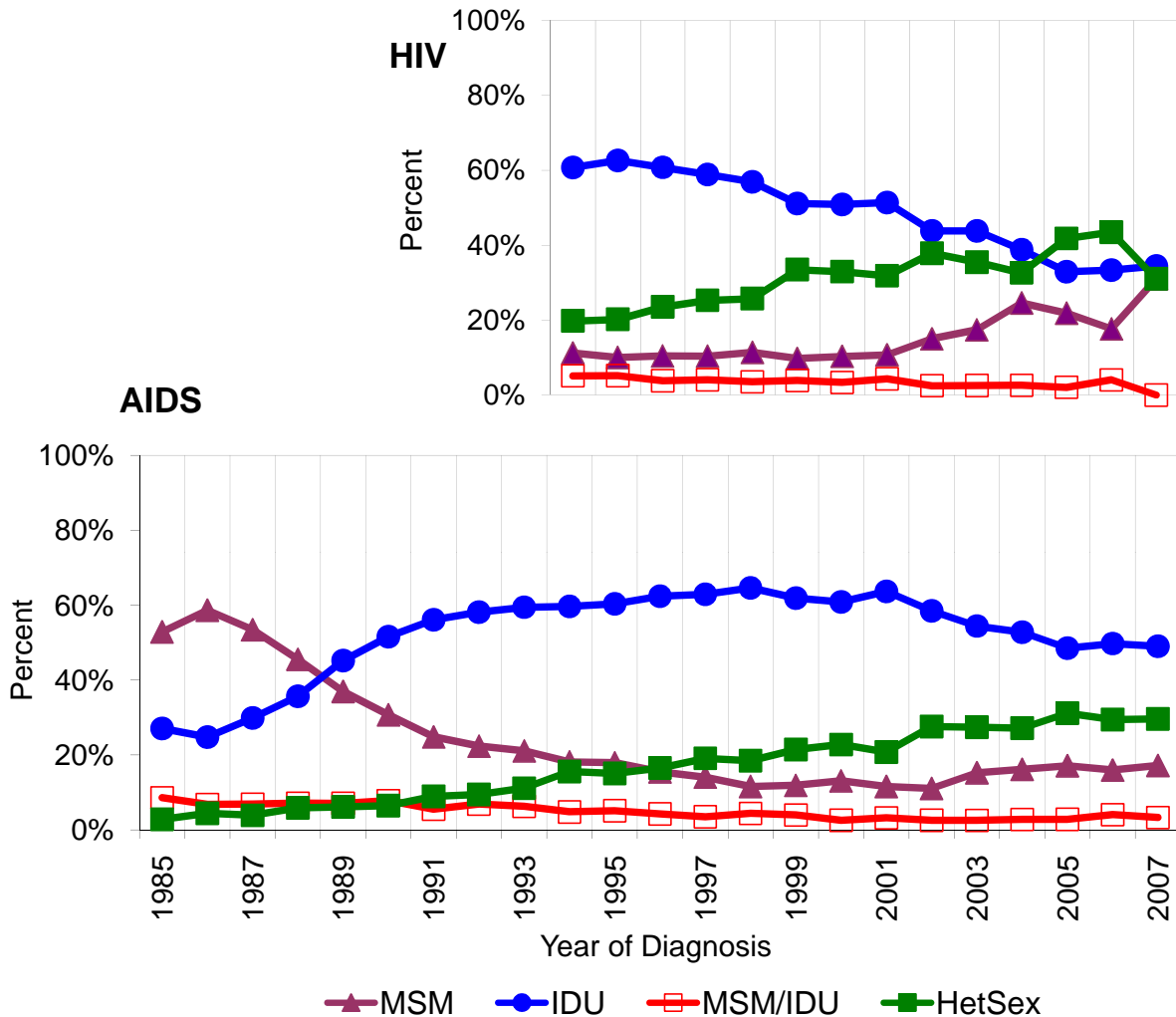


HIV case reporting began in 1994.

BALTIMORE CITY HIV/AIDS EPIDEMIOLOGICAL PROFILE - June 30,2008

Section VIII - Baltimore City AIDS Case Exposure Category Trends

Proportions by Exposure Category of Incident (Newly Diagnosed) Cases during each Calendar Year as Reported through 6/30/08



Other exposure categories (not shown) that accounted for small percentages of cases included hemophiliacs, transfusion recipients, pediatric transmissions and occupational exposures.

Percent distributions excluded cases with exposure category under investigation and risk not specified.

Baltimore City data had exposure on 57% of HIV cases and 96% of AIDS cases. HIV case reporting began in 1994.

MSM = Men who have sex with men

IDU = Injection drug users

MSM/IDU = Men who have sex with men and are injection drug users

HetSex = Heterosexual contact

BALTIMORE CITY HIV/AIDS EPIDEMIOLOGICAL PROFILE - June 30, 2008

Section IX - Comparisons to National Statistics

AIDS Cases Reported during 1/1/06-12/31/06

Maryland had the third highest annual AIDS case report rate of any state or territory in 2006 (29.0 cases per 100,000 population) and Baltimore-Towson had the second highest rate of any metropolitan area in 2006 (37.7 cases per 100,000 population). The national rate in 2006 was 12.9 cases per 100,000 population.

Ranking by AIDS case report rate, 2006*

| Rank | Metropolitan Area | Number | Rate** |
|------|---------------------------------|--------|--------|
| 1 | Miami, FL | 2,289 | 41.9 |
| 2 | Baltimore-Towson, MD | 1,001 | 37.7 |
| 3 | Washington, DC-VA-MD-WV | 1,684 | 31.8 |
| 4 | Baton Rouge, LA | 231 | 30.1 |
| 5 | New York, NY-NJ-PA | 5,500 | 29.2 |
| 6 | Columbia, SC | 197 | 28.0 |
| 7 | Memphis, TN-MS-AR | 346 | 27.1 |
| 8 | New Orleans-Metairie-Kenner, LA | 271 | 26.4 |
| 9 | Orlando, FL | 517 | 26.0 |
| 10 | Jacksonville, FL | 315 | 24.6 |

HIV and AIDS Cases Reported through 12/31/05

In 2005, the Baltimore eligible metropolitan area was ranked sixth in the nation for the number of prevalent (living) HIV and AIDS cases as reported under the Ryan White HIV/AIDS Treatment Modernization Act Of 2006.

Ranking by prevalent (reported living) HIV and AIDS cases, December 2005***

| Rank | Metropolitan Area | HIV | AIDS | HIV+AIDS |
|------|----------------------------|--------|--------|----------|
| 1 | New York, NY | 31,322 | 58,609 | 89,931 |
| 2 | Los Angeles-Long Beach, CA | 12,691 | 19,965 | 32,656 |
| 3 | Washington, DC-MD-VA-WV | 8,525 | 16,054 | 24,579 |
| 4 | Chicago, IL | 11,042 | 12,809 | 23,851 |
| 5 | Miami, FL | 10,166 | 12,965 | 23,131 |
| 6 | Baltimore, MD | 10,549 | 8,415 | 18,964 |
| 7 | Philadelphia, PA-NJ | 6,649 | 11,840 | 18,489 |
| 8 | Houston, TX | 7,152 | 10,256 | 17,408 |
| 9 | San Francisco, CA | 6,392 | 8,114 | 14,506 |
| 10 | Fort Lauderdale, FL | 6,198 | 7,443 | 13,641 |

*Centers for Disease Control and Prevention. HIV/AIDS Surveillance Report, 2006; 18:29-38.

**Rate is number of cases per 100,000 population. Population was based on 2006 estimate.

***Centers for Disease Control and Prevention. HIV/AIDS Data through December 2005.

Provided for the Ryan White HIV/AIDS Treatment Modernization Act of 2006, for Fiscal Year 2007.
HIV/AIDS Surveillance Supplemental Report, 2008; 13 (No.3):11-12.

Note: The Baltimore metropolitan area was renamed the Baltimore-Towson metropolitan area and consists of Baltimore City, and Anne Arundel, Baltimore, Carroll, Harford, Howard, and Queen Anne's counties.

BALTIMORE CITY HIV/AIDS EPIDEMIOLOGICAL PROFILE - June 30, 2008

Section X - Baltimore City HIV and AIDS Case Reports by ZIP Code

Cumulative Events Reported through 6/30/08

| ZIP CODE | HIV Cases | | | | AIDS Cases | | AIDS Deaths | |
|-----------------------|-----------|--------|---------|--------|------------|--------|-------------|--------|
| | by Code | | by Name | | Cumulative | | Cumulative | |
| | No. | % | No. | % | No. | % | No. | % |
| 21201 | 601 | 6.8% | 126 | 4.3% | 879 | 5.3% | 535 | 5.7% |
| 21202 | 735 | 8.3% | 178 | 6.0% | 1327 | 8.1% | 779 | 8.3% |
| 21205 | 331 | 3.7% | 125 | 4.2% | 675 | 4.1% | 364 | 3.9% |
| 21206 | 285 | 3.2% | 107 | 3.6% | 473 | 2.9% | 205 | 2.2% |
| 21207 | 191 | 2.2% | 69 | 2.3% | 391 | 2.4% | 201 | 2.1% |
| 21208 | 5 | 0.1% | 2 | 0.1% | 5 | 0.0% | 1 | 0.0% |
| 21209 | 33 | 0.4% | 10 | 0.3% | 54 | 0.3% | 30 | 0.3% |
| 21210 | 18 | 0.2% | 7 | 0.2% | 35 | 0.2% | 24 | 0.3% |
| 21211 | 90 | 1.0% | 29 | 1.0% | 174 | 1.1% | 94 | 1.0% |
| 21212 | 185 | 2.1% | 62 | 2.1% | 393 | 2.4% | 225 | 2.4% |
| 21213 | 722 | 8.1% | 229 | 7.8% | 1311 | 8.0% | 753 | 8.0% |
| 21214 | 80 | 0.9% | 29 | 1.0% | 143 | 0.9% | 59 | 0.6% |
| 21215 | 870 | 9.8% | 270 | 9.2% | 1673 | 10.2% | 1006 | 10.7% |
| 21216 | 498 | 5.6% | 174 | 5.9% | 1070 | 6.5% | 612 | 6.5% |
| 21217 | 1141 | 12.8% | 386 | 13.1% | 2159 | 13.1% | 1320 | 14.0% |
| 21218 | 807 | 9.1% | 296 | 10.0% | 1551 | 9.4% | 890 | 9.5% |
| 21222 | 5 | 0.1% | 1 | 0.0% | 5 | 0.0% | 4 | 0.0% |
| 21223 | 654 | 7.4% | 227 | 7.7% | 1195 | 7.3% | 675 | 7.2% |
| 21224 | 333 | 3.7% | 129 | 4.4% | 478 | 2.9% | 248 | 2.6% |
| 21225 | 176 | 2.0% | 75 | 2.5% | 371 | 2.3% | 219 | 2.3% |
| 21226 | 23 | 0.3% | 11 | 0.4% | 26 | 0.2% | 9 | 0.1% |
| 21227 | 24 | 0.3% | 2 | 0.1% | 5 | 0.0% | 4 | 0.0% |
| 21228 | 1 | 0.0% | 0 | 0.0% | 2 | 0.0% | 1 | 0.0% |
| 21229 | 391 | 4.4% | 149 | 5.1% | 811 | 4.9% | 447 | 4.8% |
| 21230 | 236 | 2.7% | 98 | 3.3% | 405 | 2.5% | 223 | 2.4% |
| 21231 | 234 | 2.6% | 85 | 2.9% | 417 | 2.5% | 228 | 2.4% |
| 21234 | 36 | 0.4% | 2 | 0.1% | 52 | 0.3% | 24 | 0.3% |
| 21236 | 0 | 0.0% | 0 | 0.0% | 0 | 0.0% | 0 | 0.0% |
| 21237 | 35 | 0.4% | 1 | 0.0% | 37 | 0.2% | 24 | 0.3% |
| 21239 | 141 | 1.6% | 69 | 2.3% | 352 | 2.1% | 195 | 2.1% |
| Missing ZIP* | 865 | | 52 | | 172 | | 90 | |
| <i>Baltimore City</i> | 9746 | 100.0% | 3000 | 100.0% | 16641 | 100.0% | 9489 | 100.0% |

Laboratory reporting of HIV cases by code existed from June 1, 1994 to April 24, 2007.

Provider and laboratory reporting of HIV cases by name has existed since April 24, 2007.

Maryland is re-reporting code HIV cases by name, therefore, the same person may appear as a code HIV case and as a name HIV case.

HIV cases reported by name since 4/24/07 may also have been reported as AIDS cases.

Non-AIDS cumulative HIV cases included all HIV cases reported through the end of the period, that had not been reported as AIDS cases by the end of the period.

AIDS deaths included all causes of death.

The median time from diagnosis to report was one month for HIV code cases, 23 months for HIV name cases, and four months for AIDS cases.

* Cases with missing ZIP were excluded from percent distributions.