

# ANNE ARUNDEL COUNTY HIV/AIDS EPIDEMIOLOGICAL PROFILE

## Fourth Quarter 2007 - Data reported through December 31, 2007

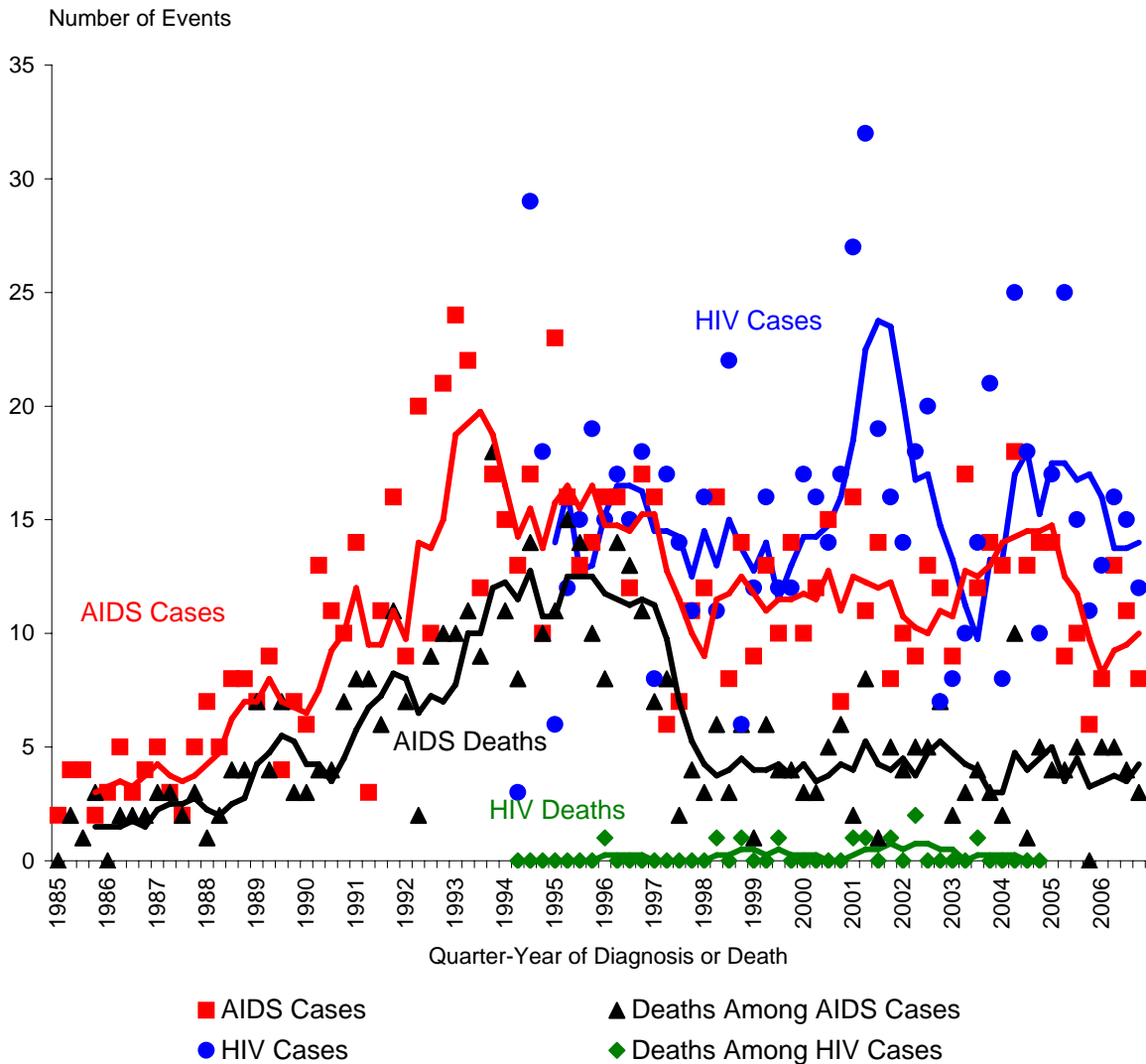
**AIDS Administration**  
**Maryland Department of Health and Mental Hygiene**  
[www.dhmd.state.md.us/AIDS/](http://www.dhmd.state.md.us/AIDS/)  
**1-800-358-9001**

### SPECIAL NOTE ON HIV REPORTING

The Maryland HIV/AIDS Reporting Act of 2007 became law on April 24, 2007. The law expanded HIV reporting and required that HIV cases be reported by name. The reporting period presented in this report includes the first months of the new reporting, however, most of the tables and figures are unaffected by this change. Section IX has been modified to include the changes and future reports will have additional modifications. For additional information on HIV reporting please visit the AIDS Administration web site at the above address.

### Section I Anne Arundel County HIV and AIDS Case Trends

**Incident (Newly Diagnosed) HIV and AIDS Cases and Deaths among HIV and AIDS Cases by Quarter-Year through Fourth Quarter 2006 as Reported through 12/31/07**



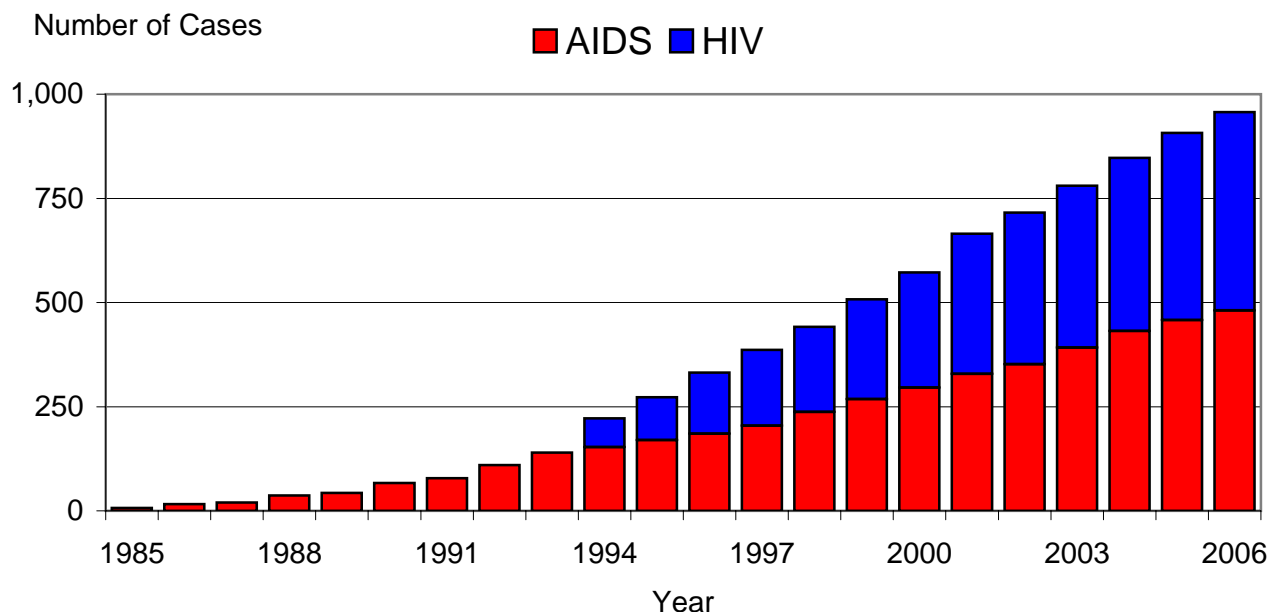
HIV case reporting began in June of 1994.  
 Trend lines are weighted moving averages (over 4 quarters).

# ANNE ARUNDEL COUNTY HIV/AIDS EPIDEMIOLOGICAL PROFILE

## December 31, 2007

### Section II -Anne Arundel County HIV and AIDS Case Prevalence Trends

Prevalent (Living) HIV and AIDS Cases on December 31st of Each Year as Reported through 12/31/07



YEAR	HIV	AIDS	Total HIV/AIDS
1985		7	7
1986		16	16
1987		20	20
1988		37	37
1989		43	43
1990		67	67
1991		78	78
1992		110	110
1993		140	140
1994	69	153	222
1995	103	170	273
1996	147	185	332
1997	182	204	386
1998	205	237	442
1999	240	268	508
2000	276	296	572
2001	336	329	665
2002	364	352	716
2003	388	392	780
2004	415	432	847
2005	449	458	907
2006	476	481	957

Prevalent cases are alive on December 31st of the given year.  
HIV case reporting began in 1994.

# ANNE ARUNDEL COUNTY HIV/AIDS EPIDEMIOLOGICAL PROFILE

## December 31, 2007

### Section III - Anne Arundel County HIV and AIDS Case Geography

**Incidence (Newly Diagnosed Cases) during 1/1/06-12/31/06 and Prevalence (Living Cases) on 12/31/06 as Reported through 12/31/07**

ZIP CODE	Incidence				Prevalence				Total HIV/AIDS	
	HIV		AIDS		HIV		AIDS		No.	%
	No.	%	No.	%	No.	%	No.	%	No.	%
20701	0	0.0%	0	0.0%	0	0.0%	0	0.0%	0	0.0%
20711	0	0.0%	1	2.5%	2	0.4%	6	1.3%	8	0.9%
20714	0	0.0%	0	0.0%	0	0.0%	0	0.0%	0	0.0%
20724	3	5.8%	1	2.5%	19	4.2%	17	3.6%	36	3.9%
20733	0	0.0%	0	0.0%	5	1.1%	1	0.2%	6	0.6%
20751	0	0.0%	0	0.0%	0	0.0%	0	0.0%	0	0.0%
20754	0	0.0%	0	0.0%	1	0.2%	0	0.0%	1	0.1%
20755	0	0.0%	0	0.0%	2	0.4%	3	0.6%	5	0.5%
20758	0	0.0%	0	0.0%	0	0.0%	0	0.0%	0	0.0%
20764	0	0.0%	0	0.0%	1	0.2%	3	0.6%	4	0.4%
20765	0	0.0%	0	0.0%	1	0.2%	1	0.2%	2	0.2%
20776	0	0.0%	0	0.0%	4	0.9%	1	0.2%	5	0.5%
20778	0	0.0%	0	0.0%	0	0.0%	0	0.0%	0	0.0%
20779	0	0.0%	0	0.0%	0	0.0%	0	0.0%	0	0.0%
20794	2	3.8%	0	0.0%	15	3.3%	10	2.1%	25	2.7%
21012	0	0.0%	0	0.0%	5	1.1%	8	1.7%	13	1.4%
21032	1	1.9%	0	0.0%	18	4.0%	10	2.1%	28	3.0%
21035	0	0.0%	0	0.0%	2	0.4%	0	0.0%	2	0.2%
21037	0	0.0%	0	0.0%	4	0.9%	9	1.9%	13	1.4%
21054	0	0.0%	2	5.0%	4	0.9%	7	1.5%	11	1.2%
21056	0	0.0%	0	0.0%	0	0.0%	0	0.0%	0	0.0%
21060	7	13.5%	3	7.5%	37	8.1%	27	5.7%	64	6.9%
21061	4	7.7%	9	22.5%	61	13.4%	77	16.2%	138	14.9%
21076	0	0.0%	1	2.5%	6	1.3%	4	0.8%	10	1.1%
21077	0	0.0%	0	0.0%	0	0.0%	1	0.2%	1	0.1%
21090	3	5.8%	1	2.5%	4	0.9%	4	0.8%	8	0.9%
21108	1	1.9%	1	2.5%	14	3.1%	7	1.5%	21	2.3%
21113	0	0.0%	1	2.5%	16	3.5%	20	4.2%	36	3.9%
21114	0	0.0%	1	2.5%	6	1.3%	8	1.7%	14	1.5%
21122	6	11.5%	4	10.0%	38	8.4%	38	8.0%	76	8.2%
21140	0	0.0%	0	0.0%	1	0.2%	2	0.4%	3	0.3%
21144	3	5.8%	4	10.0%	32	7.0%	43	9.1%	75	8.1%
21146	1	1.9%	0	0.0%	10	2.2%	13	2.7%	23	2.5%
21225	3	5.8%	2	5.0%	21	4.6%	23	4.8%	44	4.7%
21226	0	0.0%	0	0.0%	0	0.0%	0	0.0%	0	0.0%
21401	15	28.8%	3	7.5%	98	21.6%	78	16.4%	176	18.9%
21402	0	0.0%	0	0.0%	0	0.0%	0	0.0%	0	0.0%
21403	3	5.8%	6	15.0%	27	5.9%	54	11.4%	81	8.7%
21405	0	0.0%	0	0.0%	0	0.0%	0	0.0%	0	0.0%
Missing ZIP*	4		0		22		6		28	
<i>Anne Arundel County</i>	56	100.0%	40	100.0%	476	100.0%	481	100.0%	957	100.0%

Incident cases were cases newly diagnosed during the 12 month period.

Prevalent cases were alive on 12/31/06.

HIV case reporting began in 1994.

For cases reported 1/1/07 through 12/31/07, the median time from diagnosis to report was less than one month for HIV cases and three months for AIDS cases.

\* Cases with missing ZIP were excluded from percent distributions.

# ANNE ARUNDEL COUNTY HIV/AIDS EPIDEMIOLOGICAL PROFILE - December 31, 2007

## Section IV -Anne Arundel County HIV and AIDS Case Demographics

Incidence (Newly Diagnosed Cases) during 1/1/06-12/31/06 and Prevalence (Living Cases) on 12/31/06 as Reported through 12/31/07

<u>GENDER</u>	<b>Incidence</b>				<b>Prevalence</b>					
	<u>HIV</u>		<u>AIDS</u>		<u>HIV</u>		<u>AIDS</u>		<u>Total HIV/AIDS</u>	
	No.	%	No.	%	No.	%	No.	%	No.	%
Male	35	62.5%	25	62.5%	298	62.9%	331	68.8%	629	65.9%
Female	21	37.5%	15	37.5%	176	37.1%	150	31.2%	326	34.1%
Missing*	0				2				2	
<b>TOTAL</b>	<b>56</b>	<b>100.0%</b>	<b>40</b>	<b>100.0%</b>	<b>476</b>	<b>100.0%</b>	<b>481</b>	<b>100.0%</b>	<b>957</b>	<b>100.0%</b>

<u>RACE/ETHNICITY</u>	<b>Incidence</b>				<b>Prevalence</b>					
	<u>HIV</u>		<u>AIDS</u>		<u>HIV</u>		<u>AIDS</u>		<u>Total HIV/AIDS</u>	
	No.	%	No.	%	No.	%	No.	%	No.	%
White	15	41.7%	11	27.5%	127	37.5%	150	31.2%	277	10.1%
African-American	17	47.2%	25	62.5%	199	58.7%	304	63.2%	503	61.3%
Hispanic	3	8.3%	4	10.0%	10	2.9%	26	5.4%	36	4.4%
Other	1	2.8%	0	0.0%	3	0.9%	1	0.2%	4	0.5%
Missing*	20				137				137	
<b>TOTAL</b>	<b>56</b>	<b>100.0%</b>	<b>40</b>	<b>100.0%</b>	<b>476</b>	<b>100.0%</b>	<b>481</b>	<b>100.0%</b>	<b>957</b>	<b>100.0%</b>

<u>AGE**</u>	<b>Incidence</b>				<b>Prevalence</b>					
	<u>HIV</u>		<u>AIDS</u>		<u>HIV</u>		<u>AIDS</u>		<u>Total HIV/AIDS</u>	
	No.	%	No.	%	No.	%	No.	%	No.	%
<5 (Pediatric)	0	0.0%	1	2.5%	1	0.2%	1	0.2%	2	0.2%
5-12 (Pediatric)	0	0.0%	0	0.0%	4	0.8%	3	0.6%	7	0.8%
13-19	4	7.1%	1	1.5%	3	0.6%	4	0.8%	7	0.7%
20-29	14	25.0%	4	10.0%	48	10.1%	21	4.4%	69	7.2%
30-39	12	21.4%	13	32.5%	119	25.0%	85	17.7%	204	23.5%
40-49	21	37.5%	16	40.0%	201	42.2%	216	44.9%	417	43.6%
50-59	2	3.6%	4	10.0%	79	16.6%	118	24.5%	197	20.6%
60+	3	5.4%	1	2.5%	21	4.4%	33	6.9%	54	5.6%
<b>TOTAL</b>	<b>56</b>	<b>100.0%</b>	<b>40</b>	<b>100.0%</b>	<b>476</b>	<b>100.0%</b>	<b>481</b>	<b>100.0%</b>	<b>957</b>	<b>100.0%</b>

Incident cases were cases newly diagnosed during the 12 month period.

Prevalent cases were alive on 12/31/06.

HIV case reporting began in 1994.

\* Cases with missing race or gender were excluded from percent distributions.

\*\* For incident cases, age was at time of diagnosis. For prevalent cases, age was as of 12/31/06.

# ANNE ARUNDEL COUNTY HIV/AIDS EPIDEMIOLOGICAL PROFILE

December 31, 2007

## Section V - Anne Arundel County HIV/AIDS Case Expanded Demographics

Total HIV/AIDS Prevalence (Living Cases) on 12/31/06 as Reported through 12/31/07

GENDER/AGE	RACE/ETHNICITY					Total	%
	<u>White</u>	<u>African-American</u>	<u>Other</u>	<u>Missing Race/Ethnicity</u>	No.		
	No.	No.	No.	No.	No.		
<u>Male</u>							
<5 (Pediatric)	0	0	0	1	1	0.2%	
5-12 (Pediatric)	1	1	0	1	3	0.6%	
13-19	0	1	0	0	1	0.2%	
20-29	16	18	2	7	43	6.8%	
30-39	30	39	13	19	101	16.1%	
40-49	100	152	7	31	290	46.1%	
50-59	39	84	4	18	145	23.1%	
60+	18	21	1	5	45	6.1%	
<b>SUBTOTAL</b>	<b>204</b>	<b>316</b>	<b>27</b>	<b>82</b>	<b>629</b>	<b>100.0%</b>	
<u>Female</u>							
<5 (Pediatric)	0	1	0	0	1	0.3%	
5-12 (Pediatric)	1	3	0	0	4	1.2%	
13-19	1	4	0	0	5	1.5%	
20-29	6	10	0	10	26	8.0%	
30-39	19	59	9	15	102	31.3%	
40-49	36	72	3	16	127	39.0%	
50-59	7	34	1	10	52	16.0%	
60+	2	4	0	3	9	2.8%	
<b>SUBTOTAL</b>	<b>72</b>	<b>187</b>	<b>13</b>	<b>54</b>	<b>326</b>	<b>100.0%</b>	
<u>Missing Gender</u>	1	0	0	1	2		
<b>TOTAL</b>	<b>277</b>	<b>503</b>	<b>40</b>	<b>137</b>	<b>957</b>		

Prevalent cases were alive on 12/31/06.

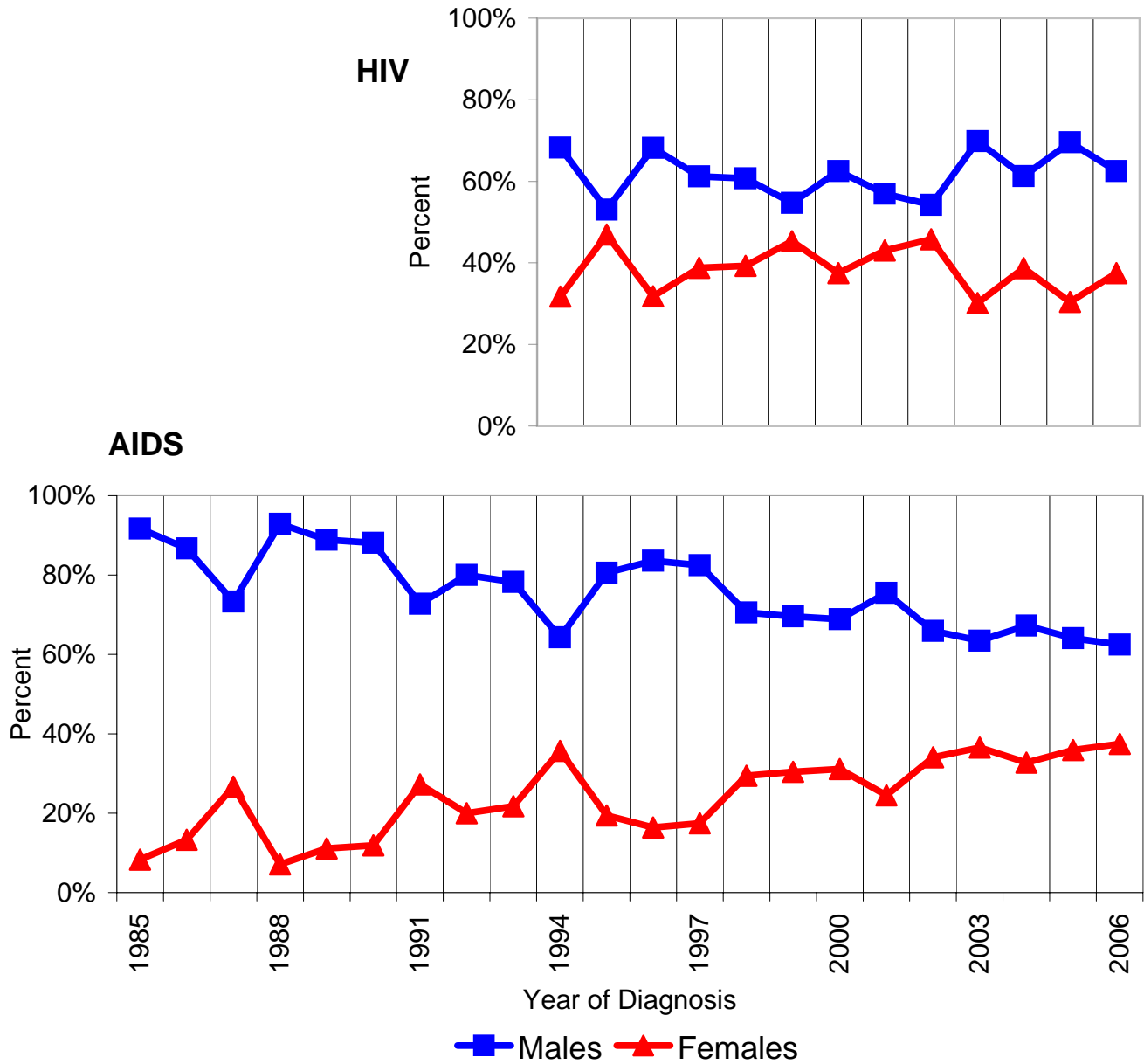
HIV case reporting began in 1994.

Age was as of 12/31/06.

**ANNE ARUNDEL COUNTY HIV/AIDS EPIDEMIOLOGICAL PROFILE**  
**December 31, 2007**

**Section VI -Anne Arundel County HIV and AIDS Case Gender Trends**

**Proportions by Gender of Incident (Newly Diagnosed) Cases during each Calendar Year as Reported through 12/31/07**



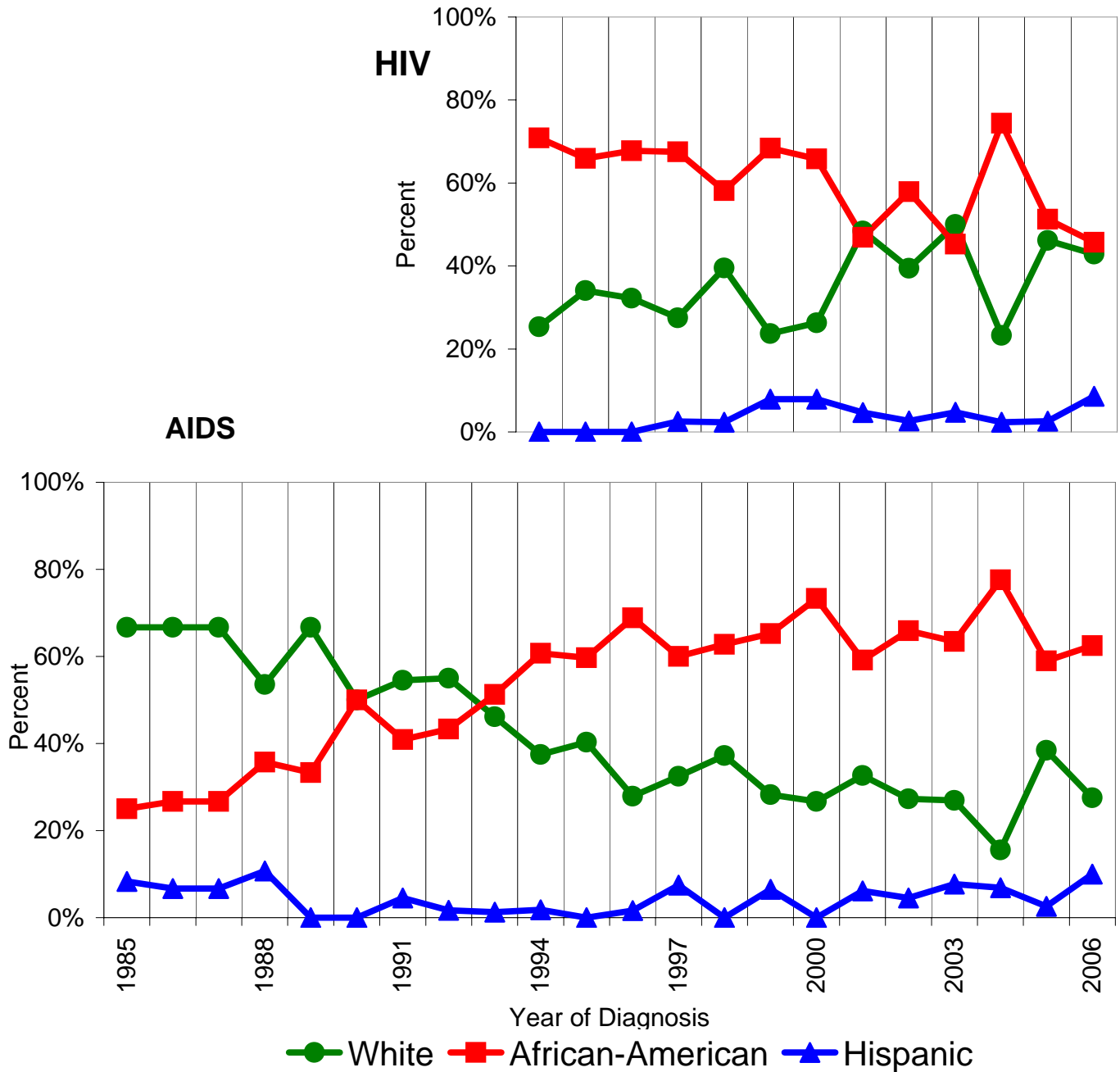
Percent distributions excluded cases with missing gender.  
 HIV case reporting began in 1994.

# ANNE ARUNDEL COUNTY HIV/AIDS EPIDEMIOLOGICAL PROFILE

December 31, 2007

## Section VII - Anne Arundel County HIV and AIDS Case Race/Ethnicity Trends

Proportions by Race/Ethnicity of Incident (Newly Diagnosed) Cases during each Calendar Year as Reported through 12/31/07



Percent distributions excluded cases with missing race/ethnicity.

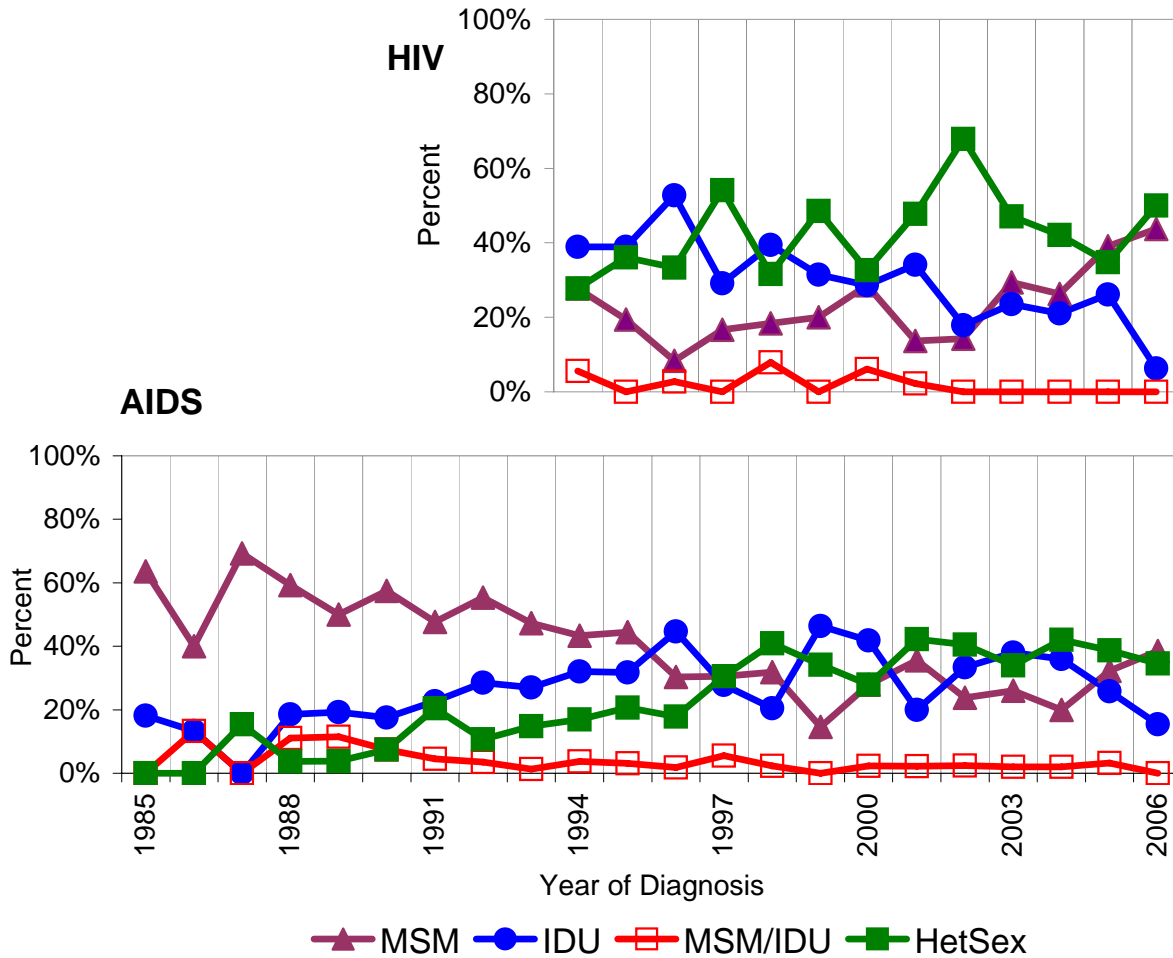
HIV case reporting began in 1994.

# ANNE ARUNDEL COUNTY HIV/AIDS EPIDEMIOLOGICAL PROFILE

## December 31, 2007

### Section VIII - Anne Arundel County AIDS Case Exposure Category Trends

Proportions by Exposure Category of Incident (Newly Diagnosed) AIDS Cases during each Calendar Year as Reported through 12/31/07



Other exposure categories (not shown) that accounted for small percentages of cases included hemophiliacs, transfusion recipients, pediatric transmissions and occupational exposures.

Percent distributions excluded cases with exposure category under investigation and risk not specified.

Anne Arundel County data currently have exposure on 51% of HIV cases and 91% of AIDS cases.

HIV case reporting began in 1994.

MSM = Men who have sex with men

IDU = Injection drug users

MSM/IDU = Men who have sex with men and are injection drug users

HetSex = Heterosexual contact



# ANNE ARUNDEL COUNTY HIV/AIDS EPIDEMIOLOGICAL PROFILE - December 31, 2007

## Section IX - Anne Arundel County HIV and AIDS Case Reports by ZIP Code

### Cumulative Events Reported through 12/31/07

ZIP CODE	HIV Cases				AIDS Cases		AIDS Deaths	
	by Code		by Name		Cumulative		Cumulative	
	Non-AIDS Cumulative		Since 4/24/07					
	No.	%	No.	%	No.	%	No.	%
20701	0	0.0%	0	0.0%	0	0.0%	0	0.0%
20711	2	0.4%	1	1.0%	12	1.2%	5	1.0%
20714	0	0.0%	0	0.0%	0	0.0%	0	0.0%
20724	22	4.5%	1	1.0%	37	3.7%	19	3.8%
20733	5	1.0%	0	0.0%	3	0.3%	2	0.4%
20751	0	0.0%	0	0.0%	0	0.0%	0	0.0%
20754	1	0.2%	0	0.0%	2	0.2%	2	0.4%
20755	2	0.4%	0	0.0%	19	1.9%	16	3.2%
20758	0	0.0%	0	0.0%	0	0.0%	0	0.0%
20764	1	0.2%	0	0.0%	6	0.6%	3	0.6%
20765	1	0.2%	0	0.0%	1	0.1%	0	0.0%
20776	4	0.8%	0	0.0%	2	0.2%	1	0.2%
20778	0	0.0%	0	0.0%	1	0.1%	1	0.2%
20779	0	0.0%	0	0.0%	1	0.1%	1	0.2%
20794	16	3.2%	2	2.0%	18	1.8%	7	1.4%
21012	6	1.2%	3	3.0%	21	2.1%	13	2.6%
21032	19	3.9%	3	3.0%	20	2.0%	10	2.0%
21035	2	0.4%	0	0.0%	9	0.9%	9	1.8%
21037	4	0.8%	3	3.0%	17	1.7%	7	1.4%
21054	4	0.8%	0	0.0%	12	1.2%	5	1.0%
21056	0	0.0%	0	0.0%	0	0.0%	0	0.0%
21060	42	8.5%	7	7.1%	50	5.1%	19	3.8%
21061	66	13.4%	19	19.2%	144	14.6%	68	13.6%
21076	6	1.2%	2	2.0%	9	0.9%	5	1.0%
21077	0	0.0%	1	1.0%	2	0.2%	1	0.2%
21090	4	0.8%	0	0.0%	10	1.0%	5	1.0%
21108	19	3.9%	2	2.0%	21	2.1%	11	2.2%
21113	18	3.7%	0	0.0%	37	3.7%	17	3.4%
21114	6	1.2%	4	4.0%	23	2.3%	15	3.0%
21122	39	7.9%	6	6.1%	78	7.9%	40	8.0%
21140	1	0.2%	0	0.0%	2	0.2%	1	0.2%
21144	33	6.7%	10	10.1%	77	7.8%	32	6.4%
21146	11	2.2%	2	2.0%	31	3.1%	17	3.4%
21225	22	4.5%	11	11.1%	45	4.6%	19	3.8%
21226	0	0.0%	0	0.0%	0	0.0%	0	0.0%
21401	102	20.7%	14	14.1%	171	17.3%	93	18.6%
21402	0	0.0%	0	0.0%	1	0.1%	1	0.2%
21403	35	7.1%	8	8.1%	107	10.8%	54	10.8%
21405	0	0.0%	0	0.0%	0	0.0%	0	0.0%
Missing ZIP*	25		6		15		7	
<i>Anne Arundel County</i>	518	100.0%	105	100.0%	1004	100.0%	506	100.0%

Laboratory reporting of HIV cases by code existed from June 1, 1994 to April 24, 2007.

Provider and laboratory reporting of HIV cases by name has existed since April 24, 2007.

Maryland is re-reporting code HIV cases by name, therefore, the same person may appear as a code HIV case and as a name HIV case.

HIV cases reported by name since 4/24/07 may also have been reported as AIDS cases.

Non-AIDS cumulative HIV cases included all HIV cases reported through the end of the period, that had not been reported as AIDS cases by the end of the period.

AIDS deaths included all causes of death.

The median time from diagnosis to report was one month for cumulative non-AIDS HIV code cases, 15 months for HIV name cases, and three months for cumulative AIDS cases.